

# EpiC Project, Papua New Guinea

**2021 - 2023**

## EpiC VACCINE PERFORMANCE SUMMARY REPORT



**ORGANISATION**  
FHI 360



**DURATION**  
August 24, 2021 to August 23, 2023



**DONOR:**  
USAID



**PROJECT VALUE**  
USD 4.1 million

### GEOGRAPHICAL FOCUS:



#### National Capital District (NCDPHA)

8 Health facilities (6 Government facilities, 2 Church-run facilities) in 3 districts:

- Moresby North East
- Moresby North West
- Moresby South

#### Central Province (CPHA)

11 Health facilities (4 Government facilities, 7 Church-run facilities) in 2 districts:

- Hiri
- Kairuku

#### Madang Province (MaPHA)

18 facilities as part of the vaccine surge campaign (12 Government facilities, 6 Church-run facilities) in 6 districts:

- Sumkar
- Middle Ramu
- Rai Coast
- Madang
- Usino-Bundi
- Bogia



### PARTNERS

- National Department of Health (NDoH)
- NCD Provincial Health Authority (NCDPHA)
- Madang Provincial Health Authority (MaPHA)
- Catholic Church Health Service (CCHS)
- ChildFund
- National Control Center (NCC)
- Central Provincial Health Authority (CPHA)
- Motu Koita Assembly (MKA)
- Businesses for Health (B4H)
- Lutheran School of Nursing, Madang

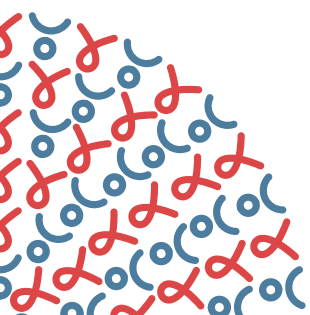


### Project Objectives

EpiC aimed to provide technical assistance to the Government of Papua New Guinea (PNG) to contribute to the rollout of the National Vaccine Deployment Plan (NDVP)

The project aimed to achieve the following outcomes:

1. Accelerate widespread and equitable access to and delivery of safe and effective COVID-19 vaccinations.
2. Reduce morbidity and mortality from COVID-19, mitigate transmission, and strengthen health systems, including to prevent, detect, and respond to pandemic threats.



**USAID**  
FROM THE AMERICAN PEOPLE





## PROJECT DESCRIPTION

Meeting Targets and Maintaining Epidemic Control (EpiC) is a five-year global project funded by the U.S. Agency for International Development (USAID). It is dedicated to addressing the HIV and COVID-19 pandemics.

EpiC was modified in early 2020 to include funding to prevent, prepare for and respond to COVID-19 and to bolster health systems to address the pandemic. EpiC supports COVID-19 vaccine readiness and rollout in numerous countries, including Papua New Guinea (PNG).

EpiC works with both national and subnational stakeholders in PNG to support roll out of the COVID-19 national vaccination deployment plan; prepare frontline health workers to deliver COVID-19 vaccines; track adverse effects and review monitoring systems to improve vaccine delivery. To create demand, counter misinformation and miscommunication and address vaccine hesitancy.

EpiC leads vaccine communication campaigns and engages trusted local leaders and peers in sharing accurate information about the safety and benefits of COVID-19 vaccinations in the communities. Importantly, EpiC works with the government and NGOs to provide vaccination services across urban, peri urban and remote rural settings.

## PROJECT OUTCOME

This report summarizes the performance of Vaccine TA Project from August 24, 2021 to August 23, 2023 , a two-year period.

### Risk Communication and Community Engagement (RCCE)



#### EpiC Project:

- Developed IEC materials , messaging on COVID 19 and FAQ flipchart
- Engaged and supported 60 RCCE short-term consultants (STCs) (NCDPHA).
- Compiled four success stories (partnership with institutions of higher learning (Lutheran School of Nursing Madang); engagement of champions through sports (Central Dabaris Rugby Club); Madang Surge campaign in Karkar Island, Home-Based Care work in NCD.



Project reached up to 6,000,000 people with COVID-19 messaging through mass media (SMS blasts, Radio, TV , Social Media and IEC materials posters, brochures, banners etc.). Flipchart on frequently asked questions was designed for HCWs and community volunteers to effectively communicate COVID-19 messages to the communities.



The Project in collaboration with a local radio program raised awareness of COVID-19 prevention messages.

### Human resources, training and skills development



Multiple training/ skill development sessions for clinicians and community-based service providers \*

97

- Short-term consultants recruited as part of the human resource for health (HR4H) intervention (NCDPHA- 64; CPHA- 2; MaPHA- 31)

559

- Community Mobilisers trained on community engagement (Male- 414; Female- 144; Not - recorded- 1)

324

- Clinicians trained on COVID-19 and risk communications (Male– 148; Female – 130 , Not - recorded- 46)

22

- Health care workers trained in basic life support (Male- 12; Female-10)

73

- Volunteer health care workers and clinical team trained in home based care package (Male- 23; Female- 50)

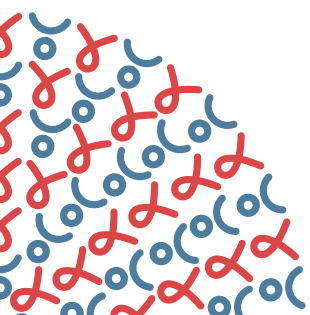
247

- School of nursing students trained on COVID-19 and risk communications (Male-111; Female-136)

252

- COVID-19 vaccine sessions with the small business houses (SME's) (Male- 145; Female-107)

\*Capacity building training topics included COVID-19 Disease (Diagnosis, treatment and prevention), Risk Communication and Community Engagement (RCCE), Infection Prevention and Control (IPC) , Home Based Care Package (HBC). People trained included health workers, community mobilisers, and Short-term consultants (STCs).



## Vaccination Service Delivery

Delivery modalities:



Surge vaccination campaigns



Static and mobile vaccination program



Pop-up sites



Community Based Outreach

Project provided technical assistance on service delivery including training of frontline HCWs, supervision & mentoring, recruitment of short-term consultants, monitoring & evaluation system strengthening, and data visualization.

## Technical assistance



- Development of COVID 19 models on integration of vaccination services in primary health care services
- Training of frontline health care workers
- Development of reporting and supervision tools
- Supervision and mentoring of health care workers
- Technical assistance on M&E system strengthening- digitization of vaccination registry and training on data visualization in Madang province

## Home Based Care package of COVID 19



2023

Development of A Practical Guide for Community Health Cadres (HBC Workers) of COVID-19

HBC approach aims to provide convenient patient-centred care in the homes and community for patients with mild disease; ensure facility-based and community health care workers work in synergy for comprehensive continuity of care; and educate patients, families and other relevant community members based on current and accurate evidence.



Main interventions



Engagement and training of STCs & Clinical team

Trained **73**  
**46** **26**  
 8 STCs supported



Home visits

Homesteads visited **222**



Adults > 65 reached

**212**  
**145** **67**



Community awareness sessions

**224**



Distribution of information, education and communication materials

**2589**



Community referrals

People referred for vaccination **54**  
 People referred for screening **213**



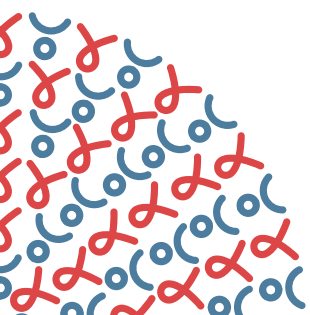
Pregnant mothers reached

**134** **62**



Immuno-compromised persons

**188**  
**94** **94**  
**113** **75**



2021-2023



**Supported sites:**

- Central Public Health Laboratory (CPHL) and NCDPHA



**HR support includes:**

- Laboratory technical officers at CPHL
- Swabbers > 20 STCs supported for NCDPHA



**Services:**

- Sample receipt and processing
- COVID-19 PCR and GeneXpert testing
- COVID-19 lab surveillance and reporting

**Mass media mobilization**



Number of persons reached through television  
**6,000,000**



Number of persons reached through radio  
**4,518,217**



Number of persons reached through hard copy  
**75,753**

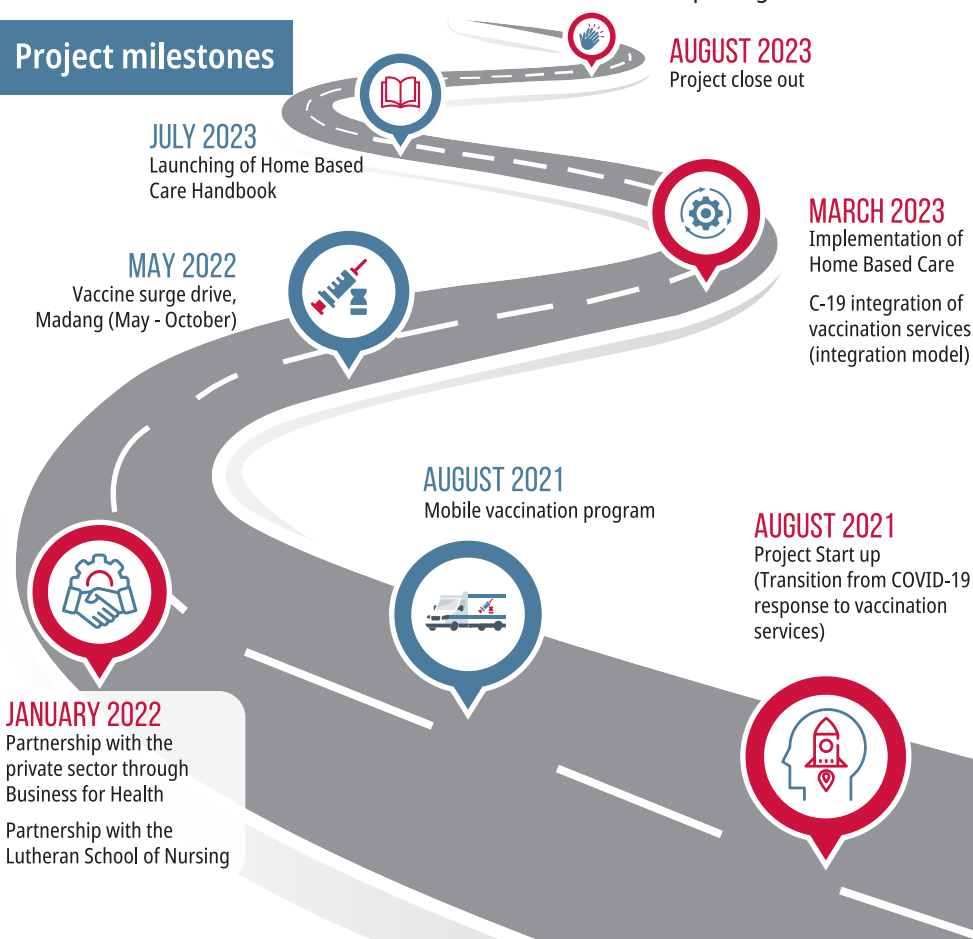


Number of persons reached through mobile and telephone  
**562,621**



Number of persons reached through social media  
**14,398**

**Project milestones**



**Life of Project Achievements**



Received First Doses  
**1,456**



Received Booster Doses  
**11,121**



Received Last Doses  
**28,506**



Total Vaccinated  
**41,083**

**59%** **41%**



**Project Sustainability Drives**



Capacity building of health care workers (HCWs)



Integration of COVID-19 vaccination into ART sites and PHAs



Developed SOPs and M&E tools for data reporting and referrals



Established Home Based Care to strengthening active case management



Set up digitalized system for data reporting and visualization using Power Bi