

Alcançar

Alcançar project webinar series:

Introducing obstetric
simulation in Nampula and
Zambézia – an overview of
the approach and
implementation learnings

February 15, 2023



Interpretation instructions

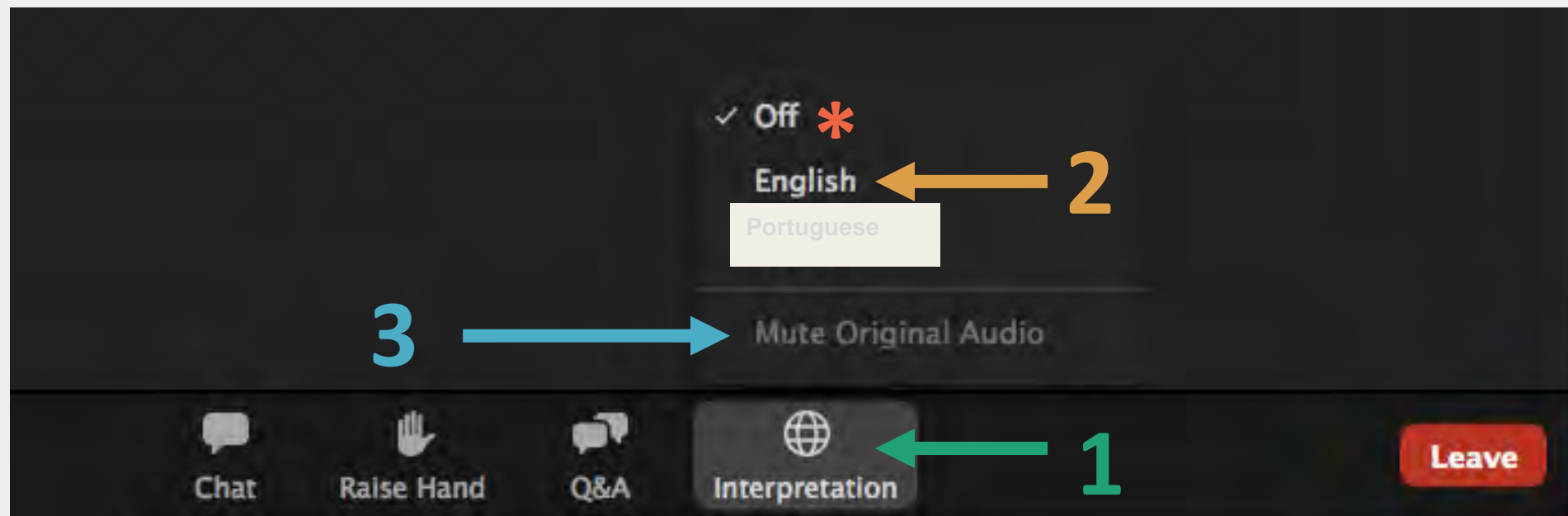
English speakers

1. Click on “Interpretation”

2. Select “English”

3. Click “Mute Original Audio”

***Portuguese speakers: leave interpretation feature “Off”**



Agenda

- Welcome
- Alcançar Project overview
- Introducing PRONTO
- Implementing obstetric simulation
- Q&A
- Closing remarks

Presenters



**Dr. Geoffrey
Ezepue**
Director

Alcançar Project



Dr. Dulce Nhassico
**Maternal and Child
Health/Family
Planning Team
Leader**
USAID



**Dr. Gizela
Azambuja**
**Head of the National
Family Health
Department**
MISAU



Sofia Costa
**Local Project
Manager**
PRONTO International



**Dr. Aguinaldo
Mariano**
**Sr. Technical Advisor
for MNCH**
Alcançar Project



Dr. Selma Xavier
**Provincial Medical
Chief**
Nampula Province

Opening remarks
from USAID and
MISAU

Alcançar

Achieving Quality Health Services for Women and Children in Nampula

5-year project 2019-2024
USAID funded



Alcançar



USAID
FROM THE AMERICAN PEOPLE

We are a 5-year project funded by USAID



FHI 360 is the leader of the consortium

CONSORTIUM PARTNERS



Alcançar



USAID
FROM THE AMERICAN PEOPLE

fhi360
THE SCIENCE OF IMPROVING LIVES

CONSORTIUM PARTNERS



dimagi



HOPEM

I Institute for
Healthcare
Improvement


PRONTO
INTERNATIONAL

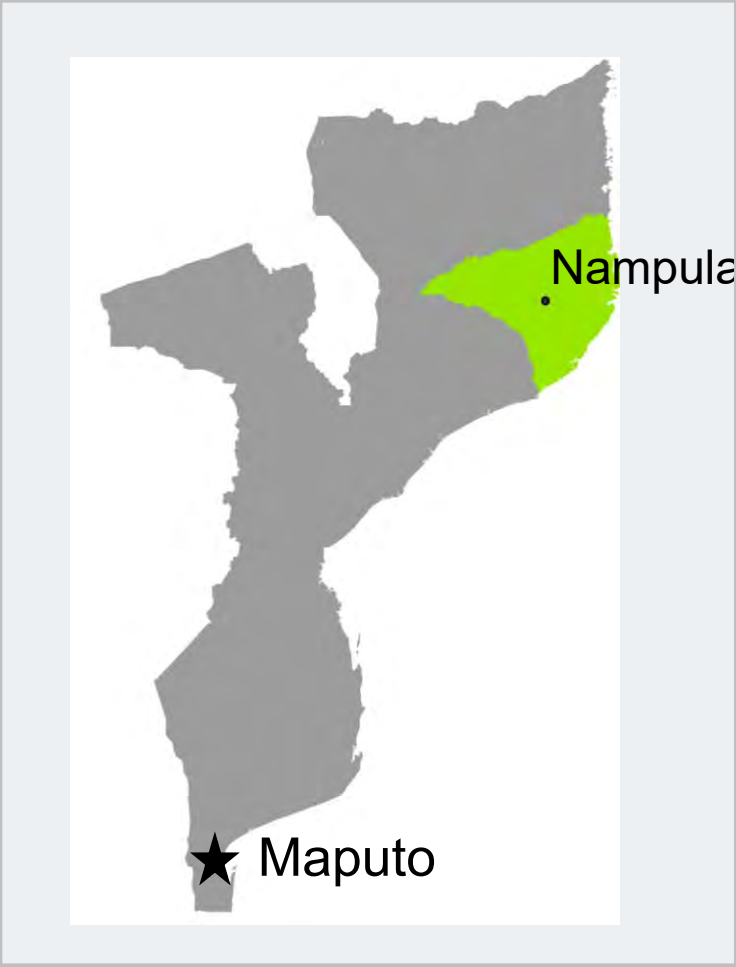
 viamo

Goals

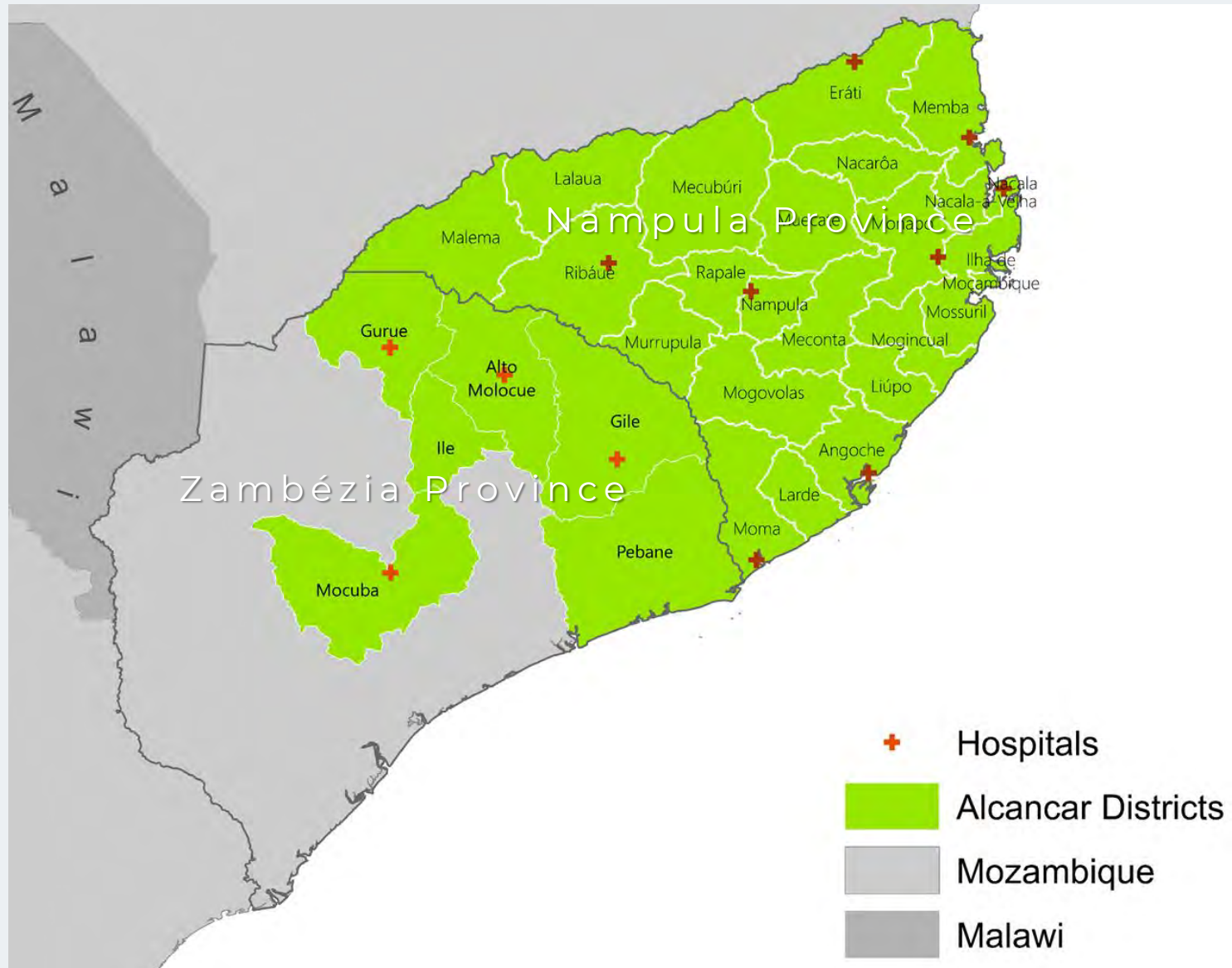
- Support the Government of the Republic of Mozambique to reduce maternal, newborn and child mortality in Nampula Province
- Establish Nampula Province as a model health system in the implementation of high impact, high quality, patient-centered and gender-responsive MNCH services



Mozambique: Nampula Province

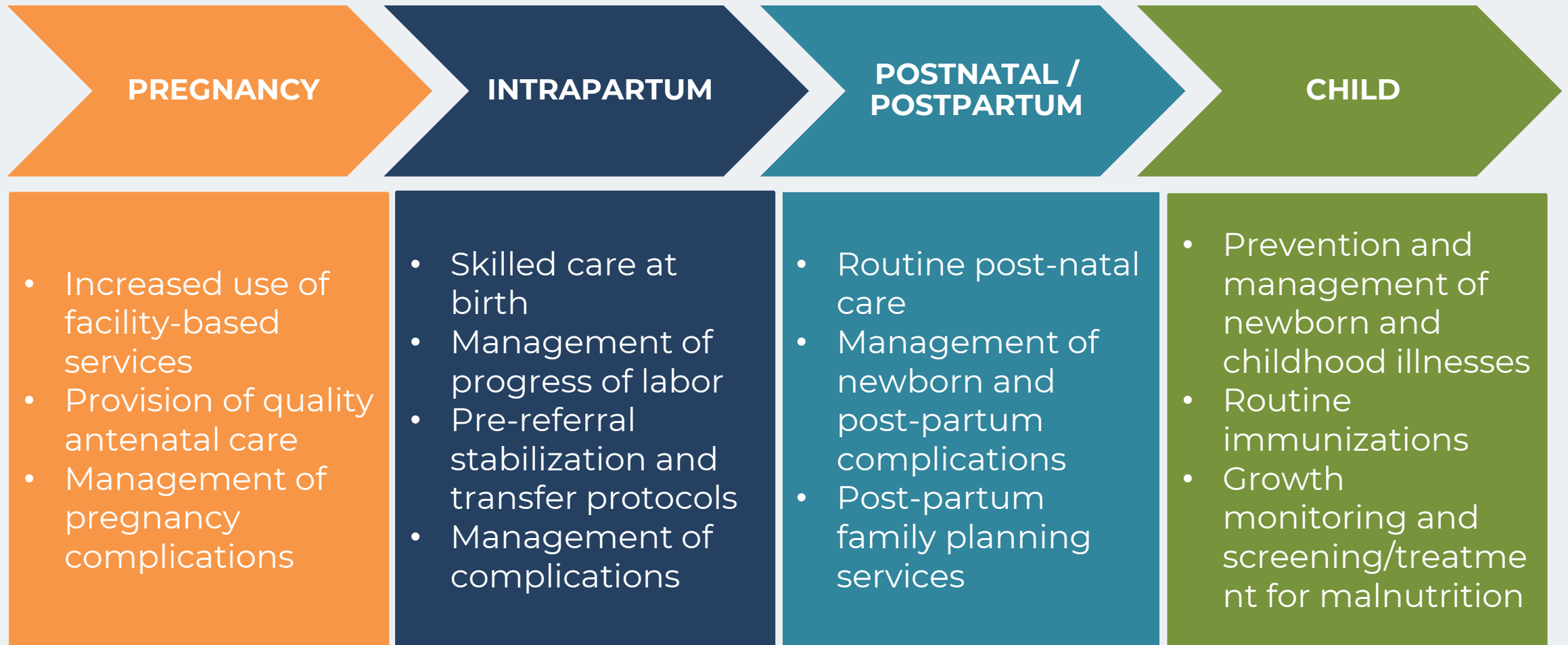


Work in Nampula and Zambézia Provinces



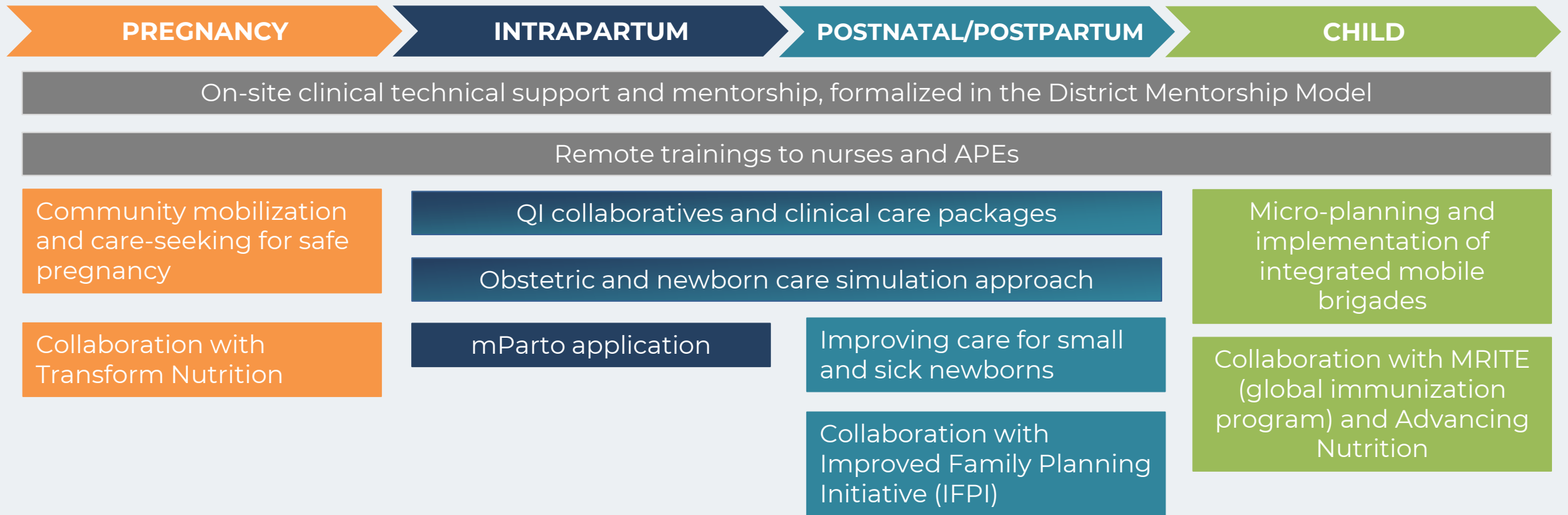
- Alcançar works in all 23 districts of Nampula Province
- Key innovations were first implemented in 7 districts (Innovation Districts) and are now being phased out to all 23 districts
- Currently expanding into 6 districts in Zambézia
- 50 health care facilities, including 4 Hospitals

Ensure delivery of evidence-based high-impact practices along the continuum of care

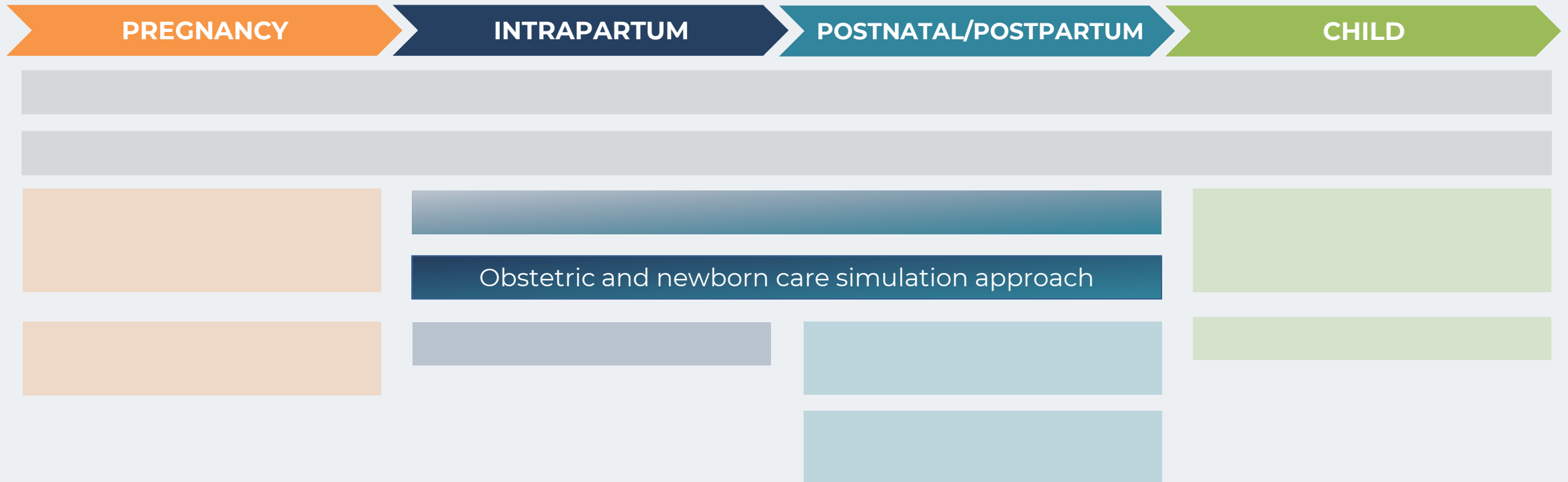


Male engagement and female empowerment curriculum; adolescent responsive health services; humanized and respectful care; improved referrals

Strategies to deliver evidence-based high-impact practices



Strategies to deliver evidence-based high-impact practices





Overview of PRONTO



PRONTO International

- PRONTO International aims to optimize care during birth.
- PRONTO envisions birth as a **safe & respectful** experience for all mothers, babies, & healthcare providers



WHAT IS SIMULATION?

A photograph of a clinical simulation. A woman wearing a white headwrap and a brown and yellow patterned shirt stands at the side of a hospital bed. She is looking down at a patient lying in the bed, who is wearing a blue top. The patient's face shows signs of distress or discomfort. In the background, a man in a light blue shirt is partially visible, standing near a teal door. The setting appears to be a hospital room.

Simulation immerses participants in a situation that replicates a real clinical scenario accurately enough to make the participant believe and feel that it is real.

Lecture or classroom learning

Goals

- Share knowledge with learners

Where?

- Classroom

Tools

- Books, teachers, etc.



Skills training or practical sessions

Goals

- Individual provider practice skills

Where?

- Usually in a simulation lab or larger centralized facility

Tools

- Task trainers



Preterm Birth Initiative - PRONTO: Preterm Neonatal NG tube Training

Skills & drills

Goals

- Individual practice
- Timed skills demonstration
- Individual assessment

Where?

- Usually in a simulation lab or larger centralized facility

Tools

- Simulation mannequin



PROMPT partial task trainer



*Preterm Birth Initiative - PRONTO:
Neonatal Resuscitation Training*

Highly-realistic team-based simulation training

Goals

- Realistic real-time emergency practice
- Teamwork & communication
- Coordinated emergency response

Where?

- Usually in simulation lab or larger centralized facility
- Can be practiced in health facilities with lower-tech supplies

Tools

- Simulation mannequin
- Low-tech simulator



NOELLE Birth Simulator for Obstetric Emergencies



PRONTO simulation training

Highly-realistic team-based simulation training

Goals

- Realistic real-time emergency practice
- Teamwork & communication
- Coordinated emergency response

Where?

- Usually in simulation lab or larger centralized facility
- **Can be practiced in health facilities with lower-tech supplies**

Tools

- Simulation mannequin
- **Low-tech simulator**



NOELLE Birth Simulator for Obstetric Emergencies



PRONTO simulation training

PRONTO simulations

Focus on not only knowledge and technical skills, but also...

Teamwork

Communication

Interprofessional
collaboration

Respectful
maternity care



The Debrief

The debrief, led by a trained facilitator, is where **most of the learning occurs and connections are made to real clinical practice.**

- What went well?
- What could have gone better?
- What would you do differently next time?



PRONTO's approach to training facilitators

- ✓ Safe learning environment
- ✓ Errors are an opportunity to learn
- ✓ Training and learning can be fun!
- ✓ Teamwork and communication activities



Leading a simulation



Facilitators use a whiteboard to provide **vital signs and clinical findings** to the provider.

SimPacks provide the full scenario for the facilitator.

Health providers reached with simulation training Nampula (23 districts)

SimPack™	Description of SimPack™	Number of Providers Reached (as of Dec 2022)
1	Normal birth	1300
2	Normal birth with non-vigorous baby	1248
3	Abnormal birth with non-vigorous baby	1199
4	Normal birth with precipitous hemorrhage	1160
5	Normal birth with delay hemorrhage (lacerations)	990
6	Birth Simulations with severe pre-eclampsia	951
7	Normal birth with prematurity	921
8	Normal birth with sepsis	984
9	Normal birth with severe pre-eclampsia and non-vigorous baby	641
10	Normal birth with severe pre-eclampsia and hemorrhage	642
11	Premature rupture of preterm membranes	652
12	Premature birth of a non-vigorous baby	660
13	Patient with suspected Covid-19 in early labor	628
14	Covid-19 positive patient with spontaneous vaginal birth of a non-vigorous baby	610
15	Premature placenta previa (31 weeks) without birth	633
16	Spontaneous preterm birth with chorioamnionitis and non-vigorous baby	616

PRONTO's Birth Simulator




PRONTO uses a birth simulator worn by a patient actress, called **PartoPants**.

Promoting and creating highly realistic simulations

- **Cry card** to simulate a newborn cry
- Patient actress asking questions
- Fake blood
- Injection pads
- IV arm band





A nurse in a white coat and blue face mask is standing at the foot of a hospital bed, talking to a patient who is lying in the bed. The patient is wearing a colorful patterned dress. In the background, another person in green scrubs and a blue face mask stands near a whiteboard with handwritten notes. The room has white tiled walls and a metal table with medical supplies on the left.

Nurse: Good morning, Misses Maria. Good morning, lady.



Implementation Perspective



Implementing simulation in Mozambique

Phase 1

35 health facilities
in 7 innovation
districts in
Nampula

Phase 2

60 health facilities
in 7 innovation
districts in
Nampula

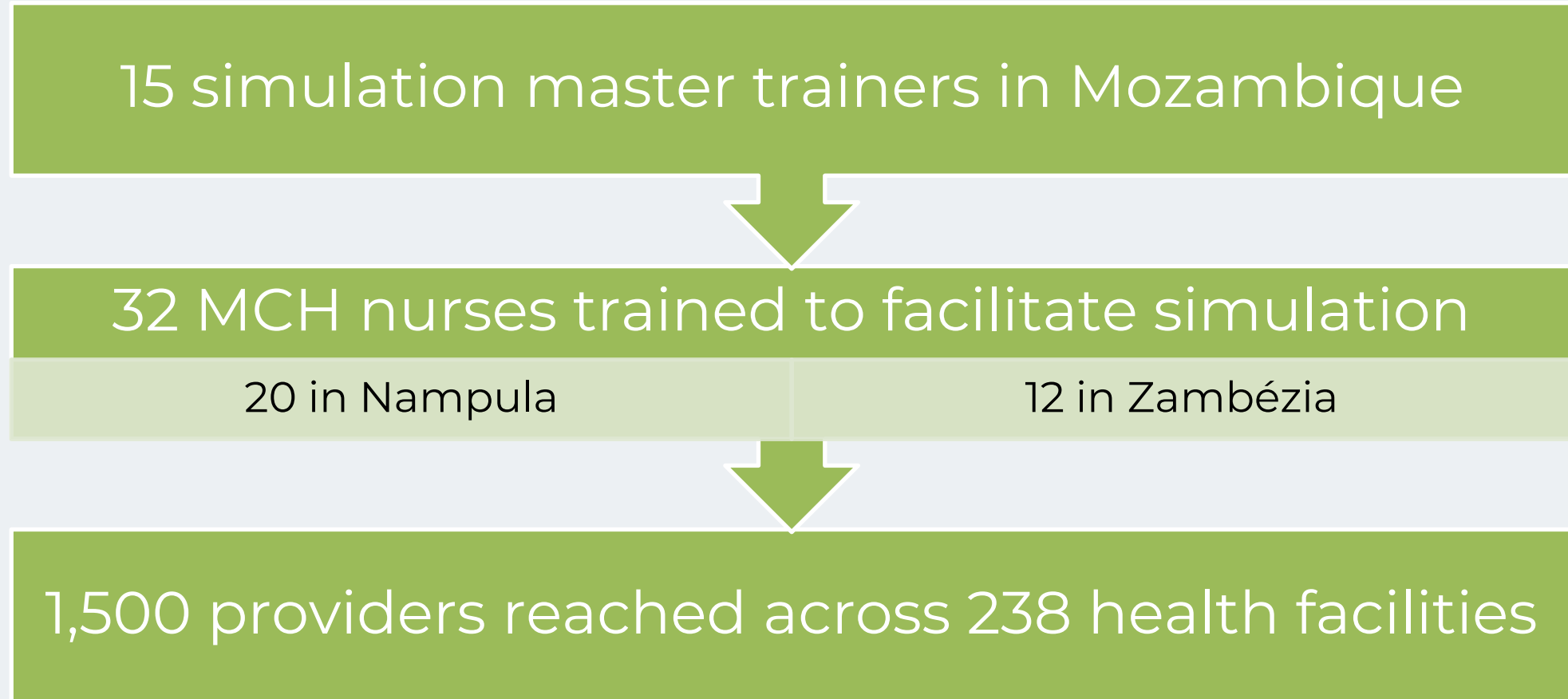
Phase 3

188 health
facilities in 23
districts in
Nampula

Phase 4

188 health facilities
in 23 districts in
Nampula and 50
health facilities in
6 districts of
Zambézia

Training model



Where was simulation conducted?

In-situ

2020-2021

- Facilitators traveled unit to unit
- Occurred in health facilities where providers work

Centralized
2022-present

- Providers across health facilities travel to a centralized location





In-situ location

Advantages

- Providers learn in their own facilities with available equipment and staff
- Builds team-work skills
- Ensures consistency of training among facility staff
- Helps identify facility gaps for handling emergencies
- No need to organize travel

Disadvantages

- Difficult to get providers' full attention
- Lack of sufficient space
- Lack of snacks
- Potential for insufficient number of participants
- Potential challenges in covering all facilities if training separately



Centralized location

Advantages

- Fosters knowledge exchange between facilities
- Fewer transport issues for mentors
- Consistent information provided across the district
- Increased efficiency with fewer mentors
- Increased provider attentiveness

Disadvantages

- Need to arrange payment for travel for some participants
- Long travel times
- Difficult to ensure coverage at providers' home facilities
- Discrepancies in available equipment between centralized sites and providers' home facilities

Perspectives on simulation training in the context of Alcançar



Providers have widespread positive perspectives on the training

Opportunity to improve and refresh technical and communication skills

Improves provider confidence

Providers learn from their mistakes and learn from each other

Perspectives on simulation training in the context of Alcançar

“The colleagues really liked the implementation of the simulations themselves; they supported and applauded the project a lot because they said...we came across these complications, but we didn’t know how to handle it because we had already forgotten...we didn’t come across cases like that in the suburbs so we forgot. So, with these simulation practices, thank God we are already so updated; we are already learning and will help us a lot in our work there in the health units.” — Mentor



Lessons learned

- Simulation is adaptable
- Participants benefit from the interactive approach, which is conducive to learning and asking questions
- Participants enjoy learning from providers across facilities and cadres
- Management of complications has improved, and mortality has decreased in the health facilities receiving package of Alcançar technical support
- SPS/DPS and MISAU recognize the value of the approach
- Wide support for continuing and expanding simulation

Comments from the Province of Nampula on the simulation training approach

Selma Xavier
Provincial Medical Chief

Q&A



Próximos webinars de 2023

Upcoming 2023 webinars

Tema/Topic

Melhoria da Qualidade: Ganhos e aprendizados da colaborativa Alcançar de redução de mortalidade materno infantil

Quality improvement: Achievements and lessons learned from the Alcançar collaborative for the reduction of maternal and infant mortality

Mobilização Comunitária e Gênero: Mobilização comunitária e GESI como estratégias para a redução da mortalidade materna neonatal e infantil em Nampula

Community Mobilization and Gender: Community mobilization and GESI as strategies to reduce maternal, newborn and child mortality in Nampula Province

THANK YOU

Alcançar



USAID
FROM THE AMERICAN PEOPLE

fhi360
THE SCIENCE OF IMPROVING LIVES

