

# Blueprint for More Sustainable Social and Behavior Change Systems

## Map SBC System Connections Tool

### Overview

Intentional and routine collaboration between social and behavior change (SBC) actors, towards shared and aligned objectives across sectors is essential in realizing the vision of a more sustainable SBC system and is necessary to achieve many health outcomes. Determinants of health are both multifaceted and interdisciplinary. Increased multisectoral collaboration offers the potential to:

- Enable more robust SBC programs, capable of addressing a wider range of individual, social, and structural factors impacting health
- Optimize resources and avoid duplication of efforts
- Maximize the reach of SBC programs

### PURPOSE OF THIS TOOL

This tool supports users to examine and document the connections needed with sectors outside of health to achieve health-related outcomes. This will help you better understand the governance structures for other relevant sectors, why engagement is needed to achieve health-related outcomes, and to identify challenges and opportunities for cooperation and engagement in achieving health and broader development outcomes.

### SNAPSHOT OF THIS TOOL

**Step 1:** Reflect on the *Illustrative SBC System Connections...* graphic below and list out government structures in your system

**Step 2:** Reflect on current and potential collaborations between the SBC system with other sectors to achieve your *SBC Blueprint* vision

## Directions for Exploring SBC System Connections with Other Sectors

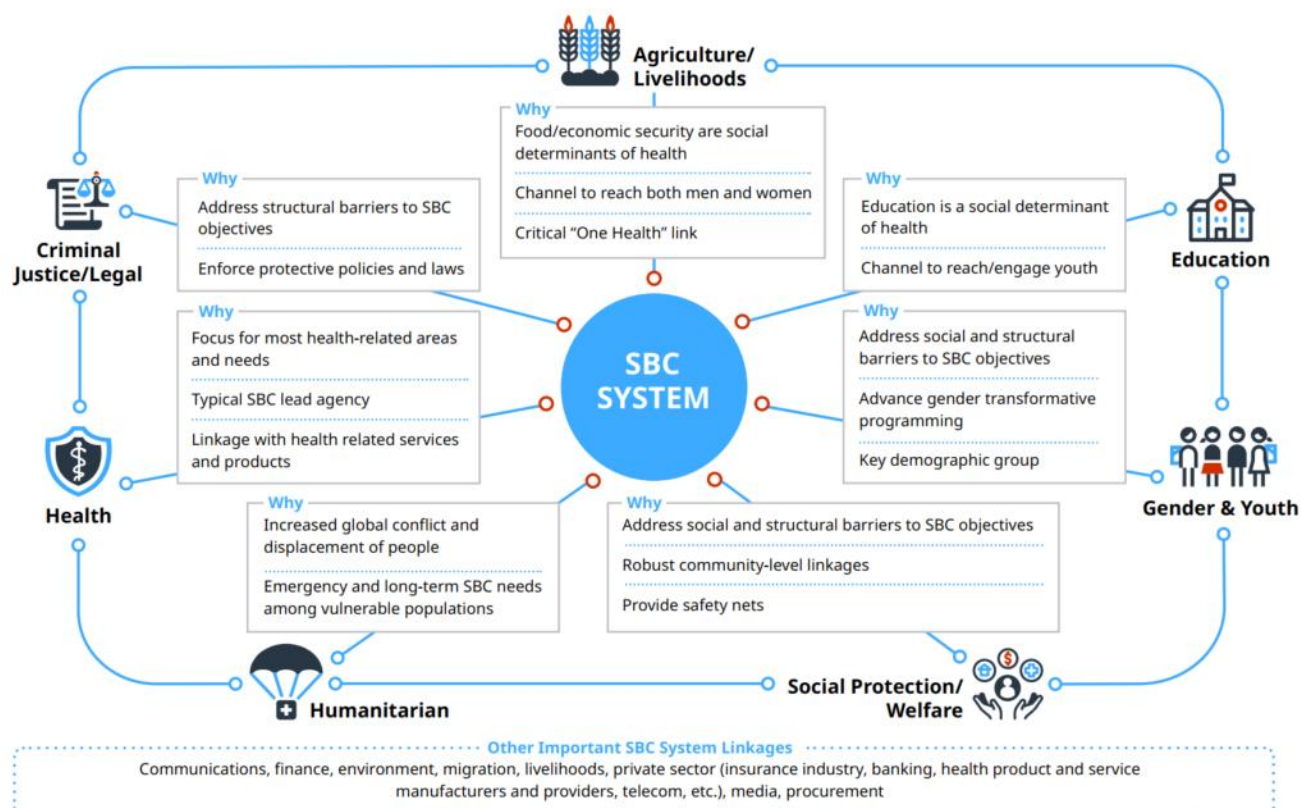
### STEP 1: LIST GOVERNMENT STRUCTURES BY SECTOR

Identify the government structures (e.g., Ministries) responsible for each sector, from national to subnational levels, using the **SBC System Connections with other Sectors in Your Context** table at the end of this tool. Each Ministry/sector could be considered a nested system, potentially providing an entry-point to engage relevant stakeholders in advancing your *SBC Blueprint* vision. List these structures in **Column 1 (Ministry Name)** of the table and reflect on shared/mutually reinforcing interests related to health objectives and note these in **Column 2 (Objective(s) to Engage)**. Use the blank row to add any additional sectors relevant in your context.

#### *SBC Blueprint* Document

To learn more, see pages 25-30.

### ILLUSTRATIVE SBC SYSTEM CONNECTIONS WITH OTHER SECTORS FOR HEALTH-RELATED OBJECTIVES



Note: within all sectors there are objectives that can be addressed and met through use of SBC strategies. This document focuses on those with primarily a health-related end objective.

## STEP 2: REFLECT ON CURRENT AND POTENTIAL COLLABORATIONS WITH OTHER SECTORS

Review the Guiding Question below and reflect on them for each sector. Detail your responses in the **SBC System Connections with other Sectors in Your Context** table at the end of this tool, namely **Column 3 (Strengths)**, **Column 4 (Challenges)**, and **Column 5 (Opportunities)**. These questions are intended to generate a discussion about the current and potential collaboration between the health SBC system and other sectors to achieve health-related objectives.

### Guiding Questions:

- What does the current relationship look like between the health SBC system and each sector/Ministry listed?
  - What are the **strengths** of current collaborations?
  - What are the **challenges** in collaboration?
  - What are the **opportunities** for collaboration?

Once the **SBC System Connections with Other Sectors in Your Context** table is completed, reflect on the Guiding Questions below:

### Guiding Questions:

- Which sectors does the health SBC system engage/collaborate with most often? Why do you think this?
  - Which sectors are the top 2?
- Which sectors does the health SBC system engage/collaborate with the least? Why do you think this?
  - Which sectors are the top 2?
- For each of the sectors, what would be the primary benefit of increased collaboration? Why do you think this?
  - Which sectors are the top 2?

### Top 2 **Most collaborative sectors** with the health SBC system and why:

1. \_\_\_\_\_  
\_\_\_\_\_
2. \_\_\_\_\_  
\_\_\_\_\_

### Top 2 **Least collaborative sectors** with the health SBC system and why:

1. \_\_\_\_\_  
\_\_\_\_\_
2. \_\_\_\_\_  
\_\_\_\_\_

Top 2 sectors with opportunities for more collaborative engagement with the health SBC system and why:

- 1. \_\_\_\_\_  
\_\_\_\_\_
  
- 2. \_\_\_\_\_  
\_\_\_\_\_

## SBC SYSTEM CONNECTIONS WITH OTHER SECTORS IN YOUR CONTEXT

Sector	(1) Ministry Name (may be more than one Ministry, list national and subnational structures)	(2) Objective(s) to Engage (shared/mutually reinforcing interests)	(3) Strengths (for collaborations)	(4) Challenges (for collaboration)	(5) Opportunities (for collaboration)
Agriculture/ Livelihoods					
Education					
Gender and Youth					
Social Protection/ Welfare					
Humanitarian					
Health					
Criminal Justice/Legal					