

# Building rapid community response network to address sexual and gender-based violence (SGBV) and human rights (Hrs) abuses among key populations and PLHIV

Larbi J. A<sup>1</sup>, Essah S<sup>2</sup>, Mangortey D<sup>1</sup>, Dr. Green K<sup>1</sup>, Wambugu S<sup>1</sup>

## USAID GHANA SHARPER Project

"Strengthening HIV/AIDS Response Partnership with Evidence Based Results" (SHARPER) project, implemented by FHI 360, is a 4-year initiative designed to reduce HIV transmission among key populations (KP), people living with HIV (PLHIV) and the sex partners of both groups. The project is being implemented in 166 high HIV prevalence districts across Ghana in collaboration with 33 implementing partners.

## Background to SGBV and human rights abuses suffered by KP and PLHIV

Documented evidences of SGBV and human rights abuse:

- **Lithur, N.O. (2012)**
  - 34.3% of FSW had been raped by a police officer
  - 14.5% of FSW coerced by police for sex to avoid arrest
  - 10% of MSM reported being raped (in general)
- **IBBSS (2011)**
  - 12.3% of FSW reported forced sex in past 12 months
  - In 6 out of 10 regions, more than 12% of FSW reported experiencing forced sex in the past 12 months.
  - In 6 out of 10 regions, more than 15% of FSW reported general physical violence in the last 12 months
- Female sex workers (FSW) and effeminate MSM are more vulnerable to violence and human rights abuses. They are perceived as "non-conformist".
- FSW and effeminate MSM are subjected to abuse by clients, their pimps, gangsters in the community and the police.
- FSW are also at a great risk of abuse and even murder from their Non-Paying Partners (Non-PPs) who can be referred to as pimps.
- Intimate partner violence among MSM is also common particularly the male/"macho" ones who generally exercises violence against the one playing the female role.

## Results

- From June 2012 to March 2013, 502 cases have been successfully addressed by the rapid community response network.

## Lessons learnt

- Creating an "enabling environment" for the protection of the rights of KP and PLHIV facilitates their ability to report abuses and threats using the available network of M-Friends and M-Watchers.
- General populations trained to appreciate the abuses and threats faced by KP and PLHIV, are motivated to protect their rights.
- Partner NGOs have witnessed a rapid response to cases of human rights abuse and SGBV.

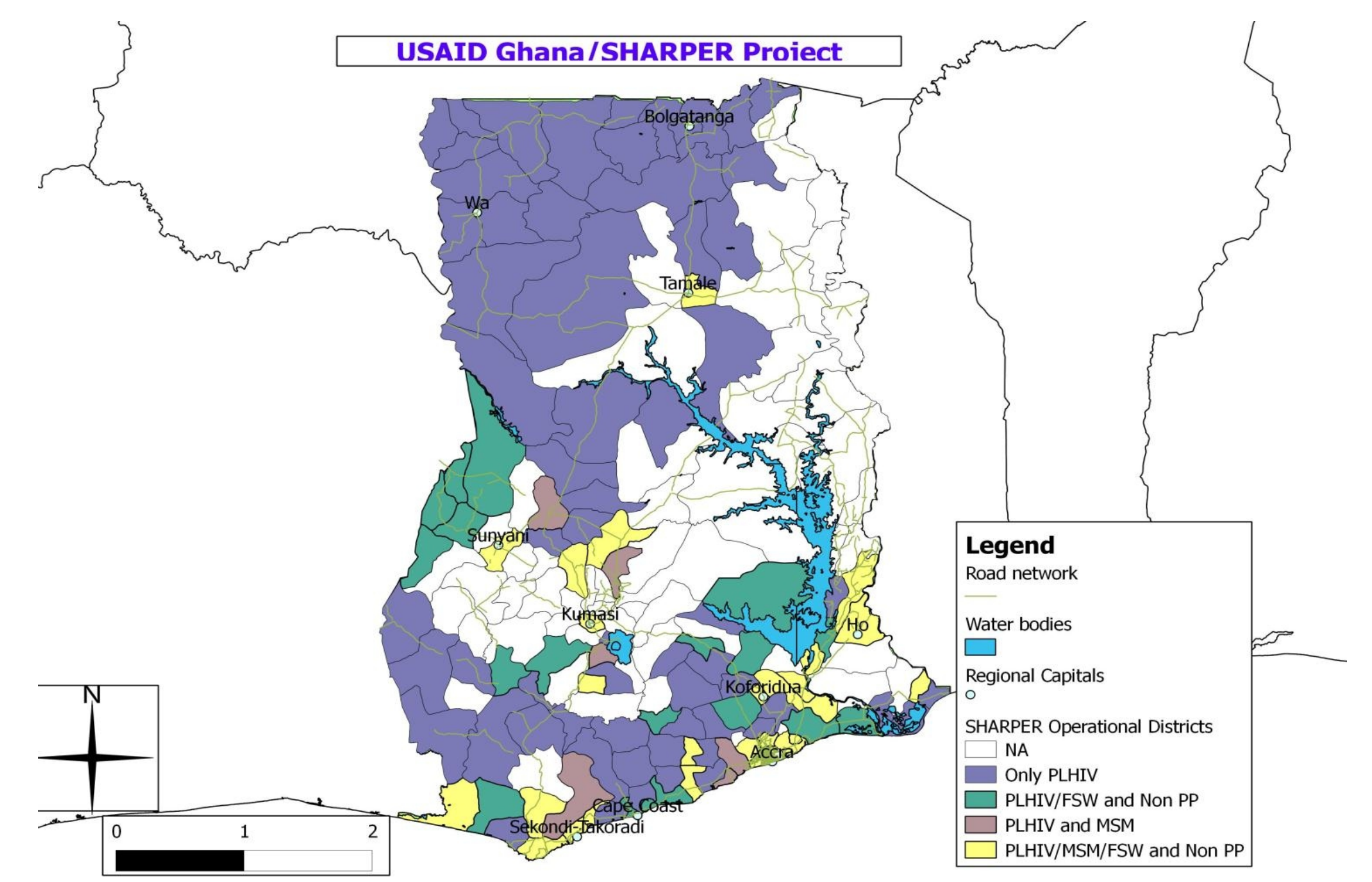
## Acknowledgment

- SHARPER Implementing Partners
- SHARPER Technical team
- USAID: Peter Wondergem, Emmanuel Essandoh
- Ghana AIDS Commission (GAC)
- Ghana Police Service
- Commission on Human Rights and Administrative Justice (CHRAJ)

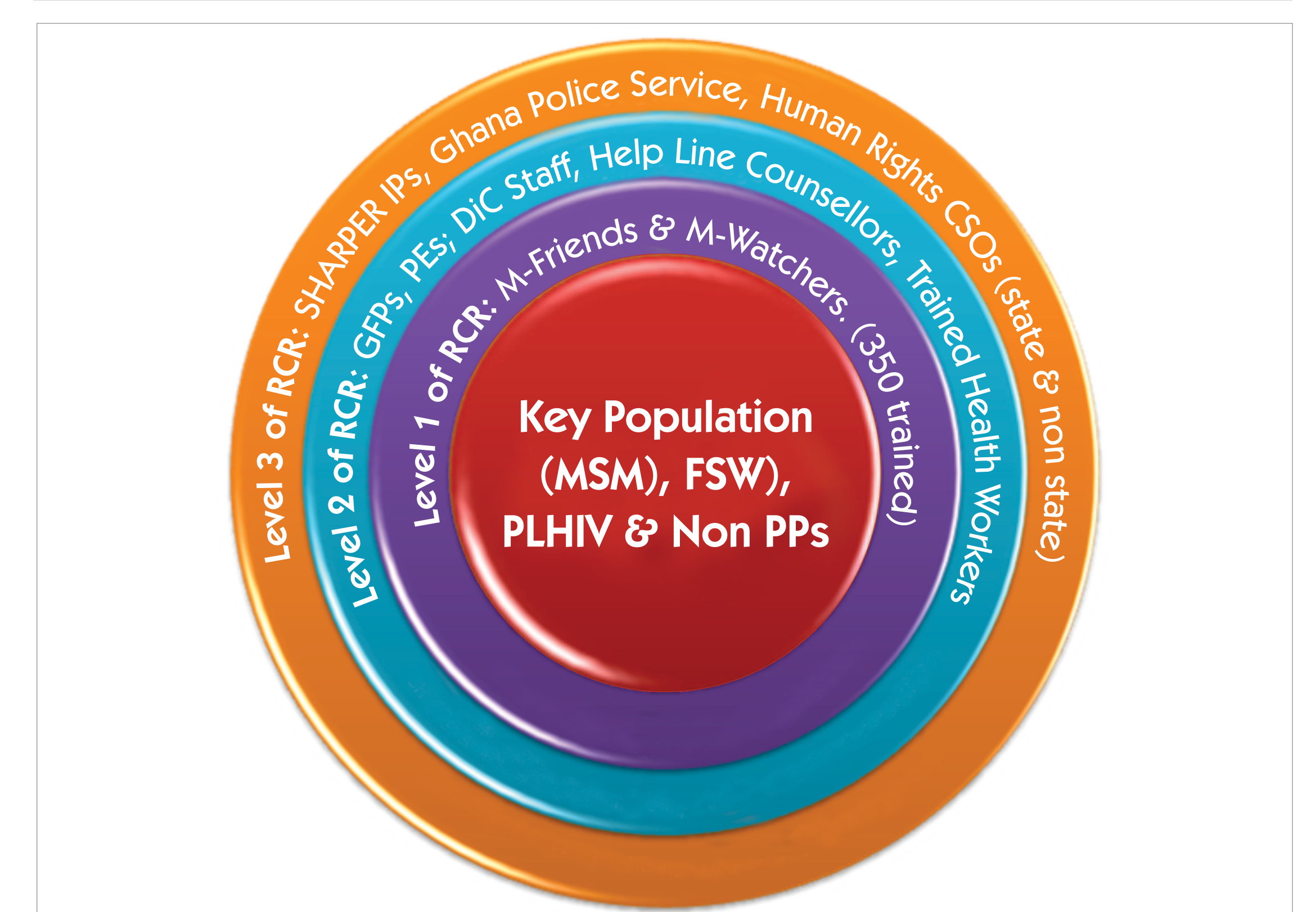
## Legend

- M-friends - MARP Friends
- M-Watchers - MARP Watchers
- GFPs - Gender Focal Persons

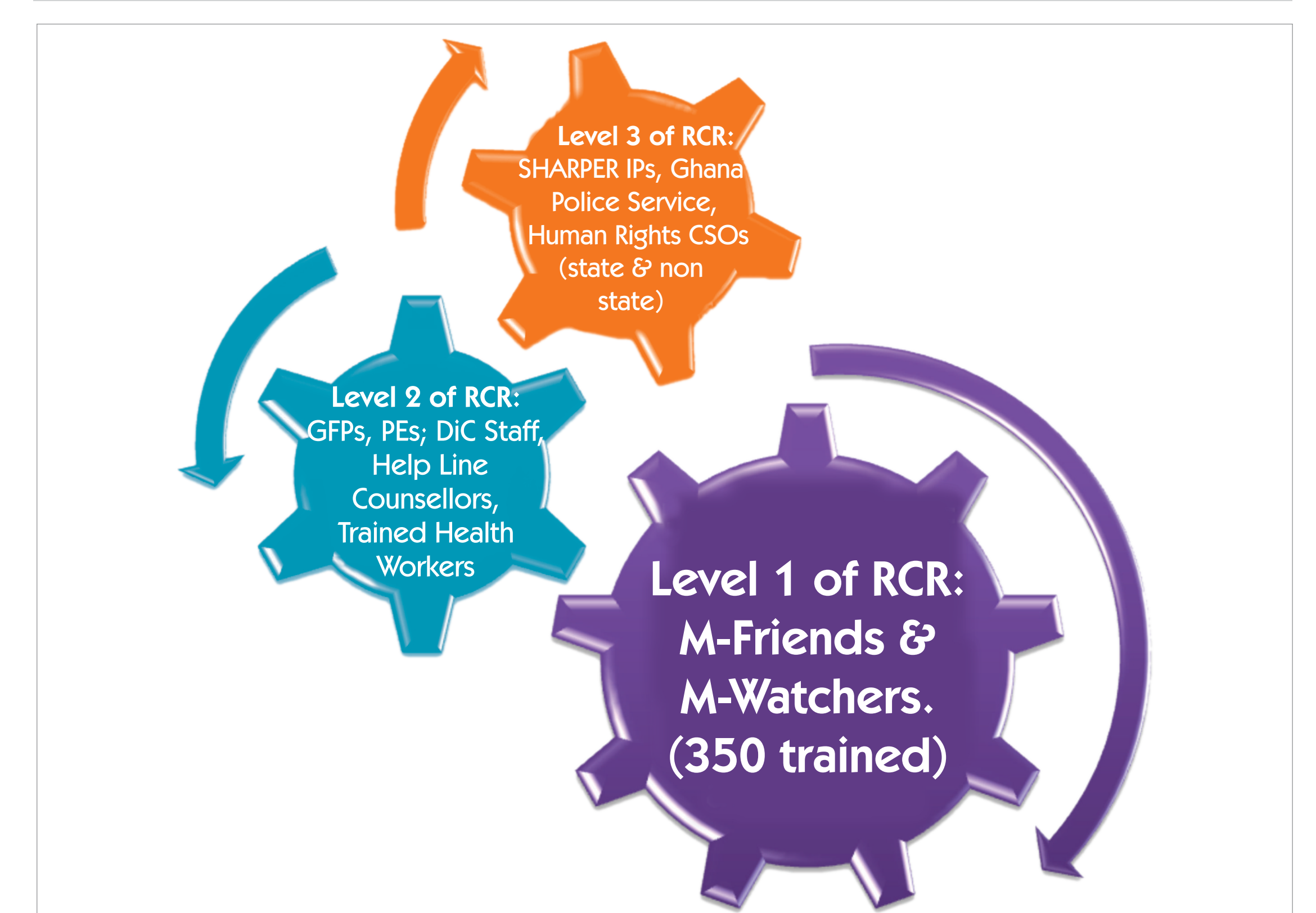
1: FHI 360      2: Social Impact



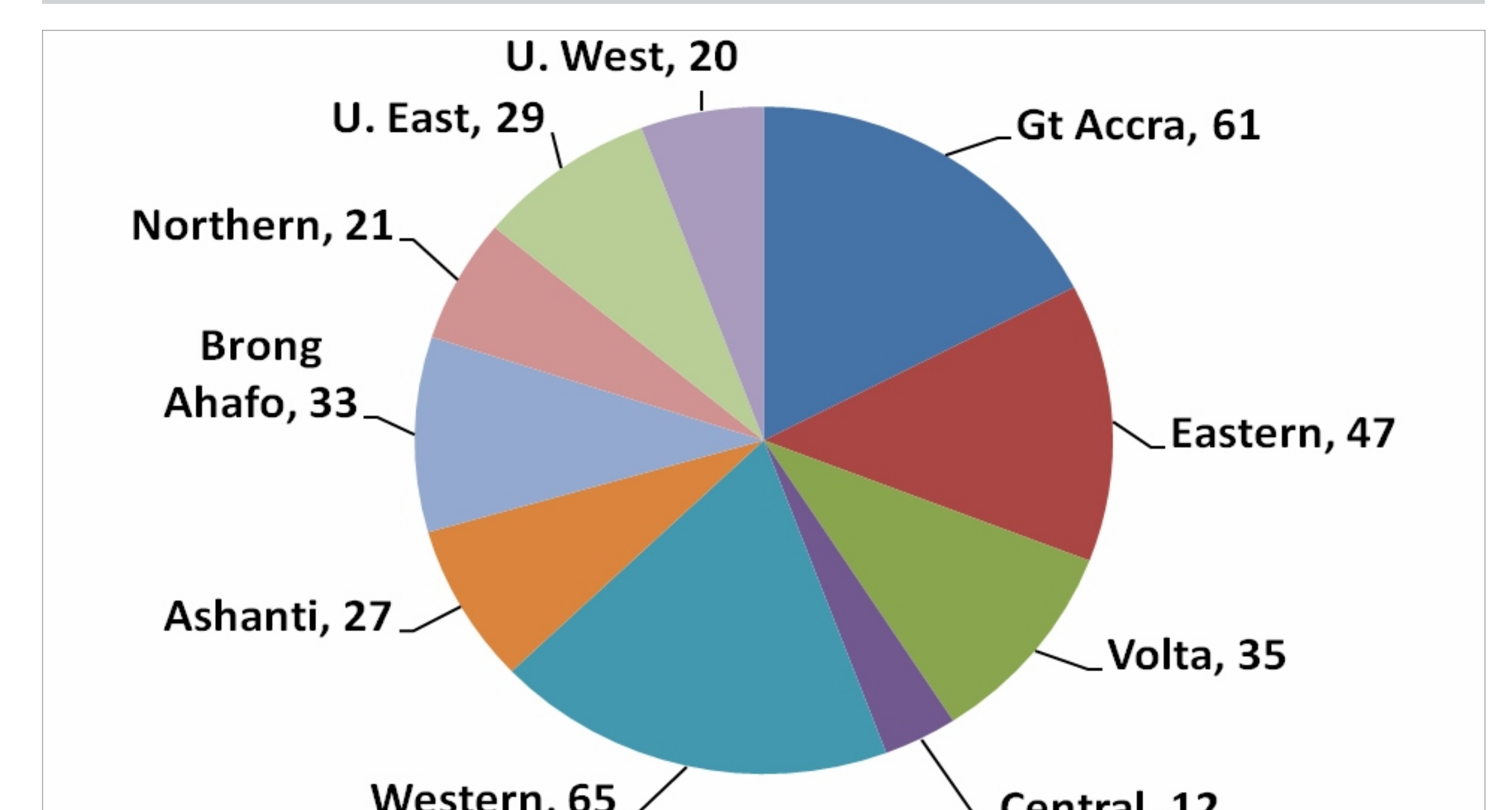
## Levels of Rapid Community Response(RCR)



## Inter relationship between RCR Levels



## Breakdown of 350 M-Friends & M-Watchers by regions



## Breakdown of 176 trained M-Watchers by MSM, FSW and PLHIV

