



APRIL - MAY 2017

Service Availability Mapping for HIV, Sexually Transmitted Infections, Gender-Based Violence, and Tuberculosis

National Capital District – Papua New Guinea



DEPARTMENT OF HEALTH



USAID
FROM THE AMERICAN PEOPLE

fhi360
THE SCIENCE OF IMPROVING LIVES



APRIL-MAY 2017

Service Availability Mapping for HIV, Sexually Transmitted Infections, Gender-Based Violence, and Tuberculosis

National Capital District – Papua New Guinea

Published February 2018 by Papua New Guinea National Capital District Health Services (NCDHS) and FHI 360.

This survey was made possible by the generous support of the American people through the United States Agency for International Development (USAID). The contents are the responsibility of Papua New Guinea National Capital District Health Services (NCDHS) and FHI 360 and do not necessarily reflect the views of USAID or the United States government.

Table of Contents

FOREWORD	1
ACKNOWLEDGMENTS	2
1 / BACKGROUND	3
2 / OBJECTIVES OF SERVICE AVAILABILITY MAPPING	3
3 / METHODOLOGY	3
Indicators	6
Data management	6
Limitations	6
4 / FINDINGS	7
Health Facility Distribution	11
Availability of National Guidelines	12
Medical Equipment	12
Human Resources	13
Exposure to Recent Training	14
Distribution of HIV, STI, TB, and GBV Services	15
Medicines and Commodities	21
Access to Laboratory Services	23
Sources of Financing	25
ANNEX 1	26
1.1 Ownership and Infrastructure	26
1.2 Availability of National Protocols and Guidelines	27
1.3 Availability of Basic Medical Equipment	28
1.4 Number of Health Workers in Each Facility	29
1.5 Number of Health Workers in Each Facility Who Received In-service Training in Three Years Prior to Survey	30
1.6 Availability of HIV, STI, TB, GBV, and Related Services	31
1.7 Availability of Laboratory Services in ART Sites	32
1.8 Availability of Laboratory Services in TB sites	33
1.9 Availability of Essential Medicines for HIV Care and Treatment in ART Sites	34
1.10 Availability of Essential Medicines for TB Treatment	35
ANNEX 2	36
Survey Questionnaire	36

List of Tables

Table 1: Health Facilities Surveyed	4
Table 2: General Characteristics	11
Table 3: Availability of Electricity	11
Table 4: Communication Services (telephone, computer, and Internet)	12
Table 5: Availability of National Guidelines and Standards	12
Table 6: Availability of Basic Medical Equipment	13
Table 7: Number of Staff in the Health Facilities	13
Table 8: Exposure to Recent Training in HIV Counseling and Testing	14
Table 9: Exposure to Recent Training in Prevention of Parent-to-Child Transmission (PPTCT)	14
Table 10: Exposure to Recent Training in HIV Care and Treatment	14
Table 11: Essential Commodities for HIV Testing and Counseling	21
Table 12: Essential Medicines and Commodities for HIV Care and Treatment	21
Table 13: Essential Medicines and Commodities for PPTCT	22
Table 14: Essential Medicines and Commodities for STI Management	22
Table 15: Essential Commodities for Tuberculosis Diagnosis and Treatment	22
Table 16: Contraceptives	23
Table 17: Laboratory Services for ART Sites	23
Table 18: Laboratory Services for Health Facilities Providing TB Treatment	24
Table 19: Management of Health Information	24

List of Figures

Map 1: Location of Facilities Surveyed	7
Map 2: Health Service Availability and Population Density	8
Map 3: Population within 5 km of Each Facility	9
Map 4: Health Facilities Available within 5 km Radius	10
Map 5: Availability of Services for Prevention of Parent-to-Child Transmission of HIV	15
Map 6: Availability of HIV Testing and Antiretroviral Therapy Services	16
Map 7: Availability of Tuberculosis Treatment Services	17
Map 8: Availability of Services for HIV Testing, ART, and Tuberculosis	18
Map 9: Availability of Services Tailored to Key Populations	19
Map 10: Availability of Services for Gender-Based Violence Management	20
Map 11: Sources of Financing for HIV Services	25

FOREWORD

Over the implementation period of the National Health Plan 2011–2020, which aims to achieve strengthened primary health care for all and improved service delivery to the rural majority and urban disadvantaged, the Government of Papua New Guinea (PNG) has prioritized strengthening the subnational level to deliver quality health services. Key Result Area 6 (KRA 6) of the National Health Plan focuses on reducing the burden of communicable diseases. In 2017, when National Capital District Health Services (NCDHS) with support from stakeholders prioritized improving the quality of HIV and tuberculosis (TB) services, there was an immediate need for basic information to guide capacity building and quality improvement activities. National Capital District has the third highest HIV prevalence in PNG (1.46 percent compared to the national average of 0.9 percent) and a high burden of tuberculosis including multidrug-resistant TB. Graced with an opportunity for development-partner support to respond to these major diseases, NCD decided to conduct service availability mapping focusing on HIV, TB, sexually transmitted infections (STI), and gender-based violence (GBV) management services to inform planning and coordinated scale-up of interventions.

This report provides important information on the distribution of HIV, TB, STI, and GBV management services in NCD, health infrastructure (government or faith-based organization [FBO] and their respective global positioning system [GPS] coordinates), physical infrastructure, communication capacity, health workforce, availability of medicines, medical equipment, and other supplies required for service delivery, availability of trained health workers, laboratory services, and presence of guidelines. The geographical maps and the detailed profiles in this report are a valuable resource to inform capacity building and systems strengthening activities.

I encourage managers and stakeholders supporting NCD to make good use of the service availability mapping report for scaling up disease control interventions. You will find the report useful as a reference document in planning and monitoring. The NCDHS is inspired to conduct subsequent surveys to monitor trends in improving service coverage. I urge other provinces to conduct similar exercises to inform their strategic plans.



Dr. Niko Wuatai
Acting Health Advisor
National Capital District Health Services



Mr. Bernard Kipit
City Manager
National Capital District Commission

ACKNOWLEDGMENTS

The service availability mapping was conducted by National Capital District Health Services (NCDHS) with technical support from FHI 360 and funding from the United States Agency for International Development (USAID). We are grateful to the team of resource persons below who conducted the mapping and to the health facility managers who responded to the survey questionnaire.

	Name	Organization
Tool adaptation and training data collectors	Dr. Justine Nankinga	FHI 360
Field testing questionnaire	Baliong Erewiong	NCDHS
Coordination of data collection and data cleaning	Kelly Manasseh	NCDHS
	Baliong Erewiong	NCDHS
	Mathew Densil	NCDHS
Data collection	Isreal Naraman	NCDHS
	Varia Joshua	NCDHS
	Gande Kua	NCDHS
	Janet Towaki	NCDHS
	Numa Lina	NCDHS
	Margaret Kamo	NCDHS
	John Josephine	NCDHS
Data analysis	William Yeka	FHI 360
Geo maps	Caleb Parker	FHI 360
	Seth Zissette	FHI 360
Survey lead	Dr. Justine Nankinga	FHI 360

1 BACKGROUND

National Capital District is the administrative unit that encompasses Port Moresby, the capital of Papua New Guinea. In the context of decentralization, NCD is the equivalent of a province and is divided into three electorates, which, for simplicity, may be considered as districts. These are Port Moresby South, Port Moresby North East, and Port Moresby North West. NCD has the third highest HIV prevalence in Papua New Guinea (1.46 percent) next to Enga and Jiwaka provinces where the HIV prevalence is estimated at 1.7 percent and 1.6 percent, respectively. The national HIV prevalence is estimated at 0.9 percent (Joint United Nations Programme on HIV/AIDS [UNAIDS] 2016).

Increasingly, decision making and funding in Papua New Guinea is decentralized to the provincial level, as part of the health sector and governance reform processes. There is inadequate information to guide planning, implementation, advocacy, and allocation of resources at the provincial level. At the request of National Capital District Health Services (NCDHS), USAID through FHI 360, provided technical support to conduct a service availability mapping (SAM) to establish the distribution of HIV services and other services for control of communicable diseases

2 OBJECTIVES OF SERVICE AVAILABILITY MAPPING

1. Provide managers and decision makers with up-to-date information on the distribution of HIV testing, antiretroviral therapy (ART), Prevention of Parent to Child Transmission of HIV (PPTCT), STI, GBV, and TB treatment services in NCD.
2. Provide information on the gaps that need to be addressed to scale up the above services.
3. Assess laboratory capacity for monitoring people living with HIV (PLHIV) on ART.
4. Assess capacity for data management and use at health facility level.

3 METHODOLOGY

An assessment was conducted at each health facility using a structured questionnaire adapted from the World Health Organization (WHO) service availability mapping facility census questionnaire.¹

A team of two interviewers visited all (35) health facilities in NCD whether operational or not. The data collection team interviewed the health facility manager, who was the key informant, but health facility staff participated where available. The data collection team observed infrastructure, equipment, medicines and other medical supplies available, as required in the questionnaire. The table below lists the health facilities visited. The team recorded GPS coordinates by one of the officers standing outside the health facility building nearest the entrance, and took photographs of the building. The duration of data collection at each facility was about two hours.

¹ World Health Organization. Available from: http://www.who.int/healthinfo/systems/sam_fac_quest_en.pdf?ua=1.

Table 1. Health Facilities Surveyed

S/N	Name	Type	Electorate	Functional/ nonfunctional	Comments
001	St Mary's Medical Center	Urban health center	Moresby North East	Functional	The clinic was not providing HIV services by the time of the survey due to unavailability of trained staff
002	Gerehu Hospital	Urban hospital	Moresby North West	Functional	
003	Kaugere	Health center	Moresby South	Functional	
004	Kila Kila	Urban clinic	Moresby South	Partially functional	Only HIV and TB clinics were running at the time of the survey.
005	ANC-MCH (PMGH)	National referral hospital	Moresby North East	Functional	
006	St Joseph Freinademetz	Urban clinic	Moresby North East	Functional	
007	PNG Institute of Public Administration	Urban clinic	Moresby North West	Functional	The clinic was not providing HIV services by the time of the survey due to staff changes
008	Gordons	Urban clinic	Moresby North East	Closed	Services were co-located at Six Mile Clinic
009	Six Mile Clinic	Urban clinic	Moresby North East	Functional	
010	CIS Bomana	Urban clinic	Moresby North East	Functional	
011	Gereka Clinic (Nazarene)	Urban clinic	Moresby South	Functional	
012	Pari Clinic	Community aid post	Moresby South	Functional	
013	Badili Clinic	Urban clinic	Moresby South	Functional	
014	Lawes Road Clinic	Urban clinic	Moresby South	Functional	
015	St Paul's Gerehu Clinic	Urban clinic	Moresby North West	Functional	
016	Pacific Adventist University Clinic (PAU)	Urban clinic	In Central province	Functional	Included in analysis because it receives medical supplies and management oversight from NCDHS
017	Murray Barracks Clinic	Urban clinic	Moresby North West	Functional	
018	Morata Clinic	Urban clinic	Moresby North West	Functional	The clinic was not providing HIV services by the time of the survey

S/N	Name	Type	Electorate	Functional/ nonfunctional	Comments
019	St Therese Clinic	Urban clinic	Moresby North West	Functional	
020	Taurama Barracks	Urban clinic	Moresby South	Functional	
021	Tokarara Clinic	Urban clinic	Moresby North West	Functional	
022	University of Papua New Guinea Clinic	Urban clinic	Moresby North West	Functional	
023	Nine Mile Clinic	Urban clinic	Moresby North East	Functional	
024	Begabari Clinic	Urban clinic	Moresby North West	Functional	
025	Vabukori Clinic	Urban clinic	Moresby North West	Clinic was closed by the time of the survey and staff moved to other clinics.	Staff were interviewed at Kaugere
026	Salvation Army House of Hope Ela Beach	VCT Satellite clinic	Moresby South	Functional	
027	Well Baby Clinic (PMGH)	National referral hospital	Moresby North East	Functional	
028	Poros Support	Urban VCT clinic	Moresby North East	Functional	This project supported clinic was closing down by the time of the survey
029	PNG – Power Clinic	Urban clinic	Moresby North West	Functional	
030	PNG – Education Institute	Urban clinic	Moresby North East	Functional	The clinic was not providing HIV services by the time of the survey due to changes in staffing
031	Jacksons Air Base Clinic	Urban clinic	Moresby North East	Functional	
032	Bomana Police College	Urban clinic	Moresby North East	Functional	
034	Koki Salvation Army	Urban clinic	Moresby South	Functional	
034	Heduru Clinic	National referral hospital	Moresby North East	Functional	
035	Rural Mobile Clinic - Hiri	Urban clinic	In Central Province	Functional	Excluded from analysis

INDICATORS

The information collected includes:

- health infrastructure (public or private, facility type, GPS coordinates); availability of water, toilet/pit latrine, electricity supply, communication
- Availability of key services, i.e. antenatal care (ANC), labor and delivery, HIV testing and counseling (HTC), STI, PPTCT, ART, tuberculosis
- Presence of guidelines
- Health workforce/staffing
- Availability of trained health workers and their exposure to recent training on respective interventions
- Availability of basic equipment required for delivery of prioritized services
- Availability of essential medicines and supplies required to provide the services prioritized for Service Availability Mapping (SAM)
- Access to laboratory facilities for diagnosis and monitoring client's response to treatment

DATA MANAGEMENT

Data was double entered in Epi Info Version 7 (US Centers for Disease Control and Prevention) by two data entry clerks. Data was then transferred into Stata 11 (Stata Corporation) for cleaning, processing, and analysis. The two datasets were matched, data entry errors identified and corrected, then processed for analysis. Simple descriptive analysis was conducted to determine the number and proportion of health facilities with various infrastructures, types of services provided, training in various areas, availability of commodities and medical equipment, and availability of drugs and laboratory equipment.

LIMITATIONS

While NCD has several private health facilities, the survey was conducted in public and faith-based or private, not-for-profit health facilities. Private, for-profit facilities were not visited because of the difficulties in obtaining approval and lack of clarity on the regulatory authority to grant approval or utilize the results.

The information provided is not a measure of service quality, and some information, for example, pre-service training, is out of the scope of SAM.

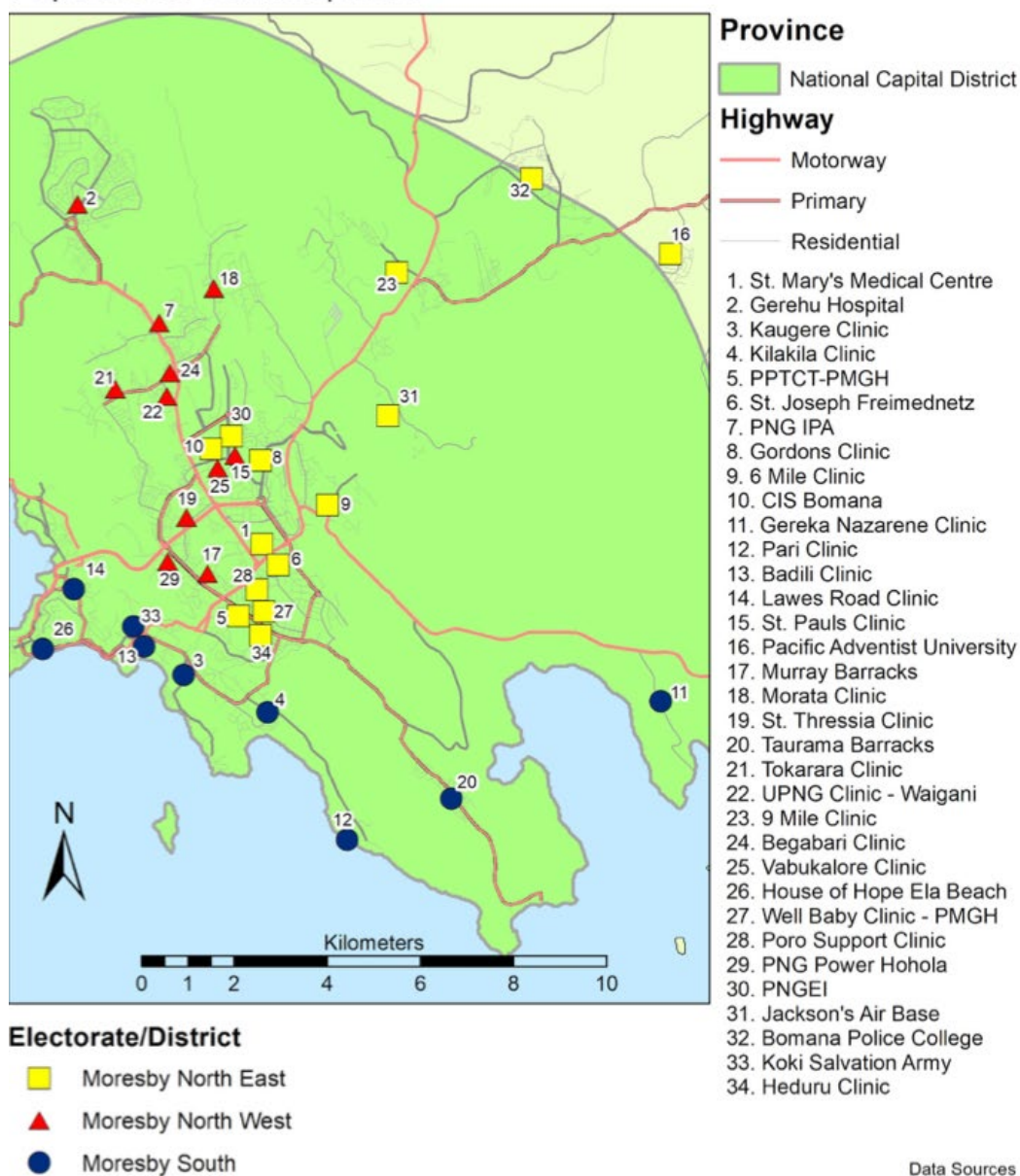
4 FINDINGS

HEALTH FACILITY DISTRIBUTION

Map 1 illustrates the location of health facilities surveyed in NCD in relation to major road networks. These included 14 clinics in Moresby North East (yellow squares), 11 clinics in Moresby North West (red triangles), and nine clinics in Moresby South (blue circles).

Map 1. Location of Facilities Surveyed

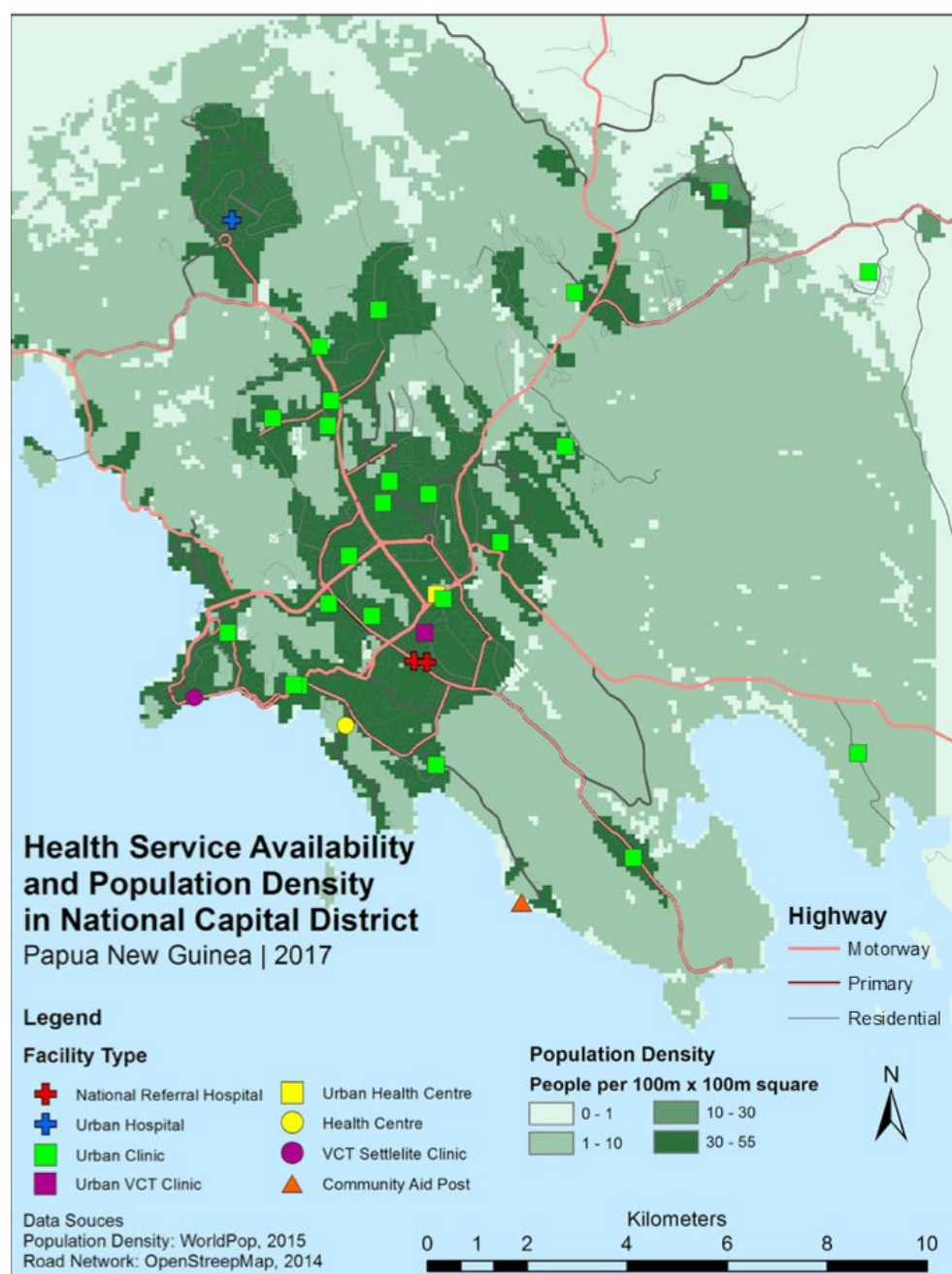
Location of Facilities Surveyed in National Capital District Service Availability Mapping Papua New Guinea | 2017



Map 2 illustrates the location of facilities in NCD symbolized by the type of facility in relation to both major road networks and population density.

The darker green portions of the map represent areas with higher population density. For example, areas with the darkest green have a population density of 30 to 55 people within a 100-by-100-meter square. Except for a few urban clinics on the outer edge of the district, most facilities fall within the most densely populated areas and along major roadways.

Map 2. Health Service Availability and Population Density

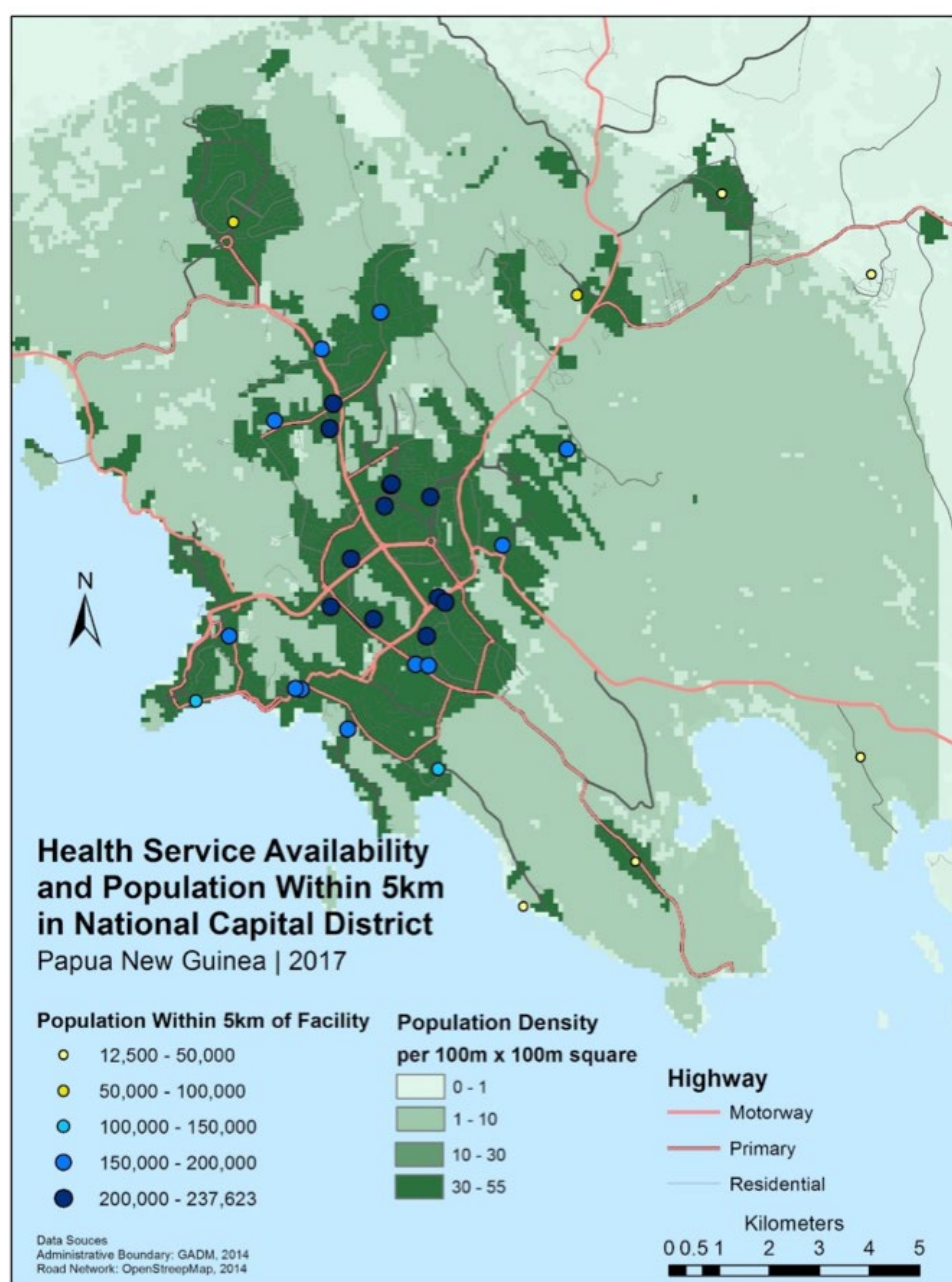


Map 3 illustrates the location of facilities in NCD symbolized by the population within 5 kilometers of the facility.

Each point represents a facility, and darker points represent facilities with a higher population within the 5-kilometer radius. For example, the darkest blue points represent facilities that have 200,000 to 237,623 people living within 5 kilometers.

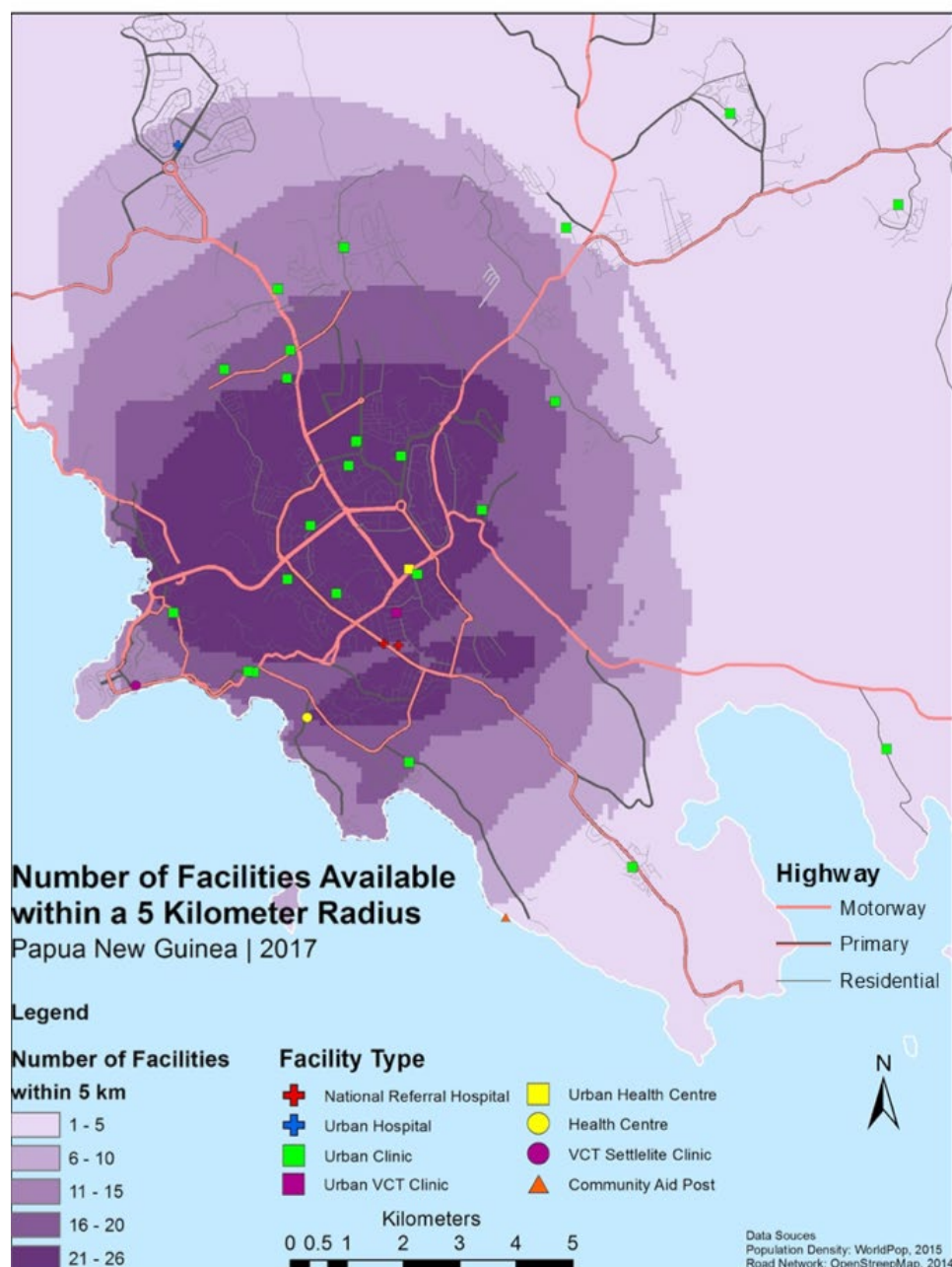
Note that population counts are not exclusive to one facility: if one person lives within 5 kilometers of seven different facilities, that person would be counted for each of the seven facilities.

Map 3. Population within 5 km of Each Facility



We created Map 4 to better show areas of Port Moresby with access to health facilities. The darkest purple indicates that people who live in these areas have access to from 21 to 26 health facilities of various types. Using the 5-kilometer range is a loose definition of access, but it begins to describe how some areas of town have many choices of health facilities (darkest purple), and others have fewer choices (lightest purple means from 1 to 5).

Map 4. Health Facilities Available within 5 km Radius



HEALTH FACILITY DISTRIBUTION

Table 2. General Characteristics

	Name	Type
Ownership	Government	20/34 (60.6%)
	Nongovernmental organization/ faith-based organization (NGO/FBO)	14/34 (39.4%)
Facility Type	Updated NHIS categorization was not available	
Clinic Volumes (# of outpatients received in March 2017)	<500	9/34 (26.5%)
	501-1,500	8/34 (23.5%)
	1,501+	9/34 (26.5%)
	Missing OPD client data	8/34 (23.5%)
Inpatient Services	# health facilities with inpatient services	2/34 (5.9%)

➡ **Annex 1.1 provides details of the names of health facilities in each category.**

Water and sanitation

All health facilities have a water source but quality varies. The pie-chart on the left shows the type of water source, the number and percentage of all facilities using the specified water source.

Seventy-six percent (76%) of health facilities have usable toilets. The pie-chart on the right shows the variation in availability of toilet facilities

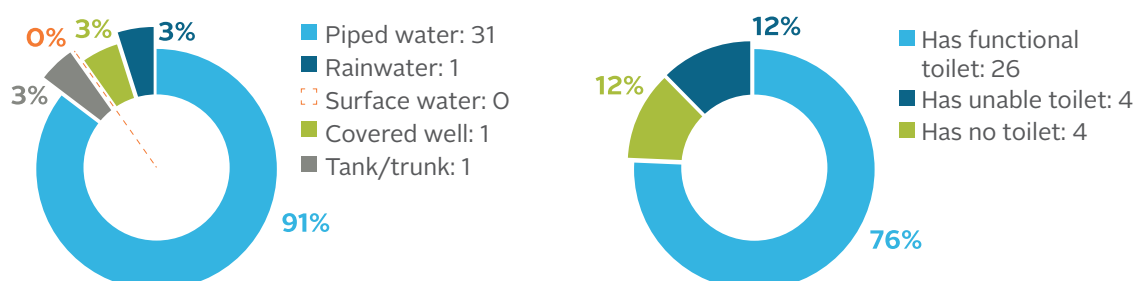


Table 3. Availability of Electricity

	Number	Percentage
Health facilities with electricity	34/34	100.0
Health facilities with reliable electricity source	32/34	94.1

➡ **See Annex 1.1 for details of health facility names.**

N.B Vabukori Clinic and UPNG Clinic had unreliable electricity supply due to problems with the power lines.

Table 4. Communication Services (telephone, computer, and Internet)

	Number	Percentage
Health facilities with landline phone	10/34	29.4
Health facilities with cellular phone	17/34	50.0
Health facilities with no telephone services	11/34	32.4
Health facilities with a computer	25/34	73.5
Health facilities with functioning Internet services	10/34	29.4

➡ See Annex 1.1 for details of health facility names.

AVAILABILITY OF NATIONAL GUIDELINES

Table 5. Availability of National Guidelines and Standards

National Guideline	# of health facilities providing the intervention	# of health facilities providing the intervention and have national guidelines	% of health facilities providing intervention and have the national guidelines
HIV care and treatment	14/34	14/14	100.0
HIV antibody testing and counseling	26/34	24/26	92.3
STI diagnosis and treatment	32/34	26/32	81.3
Family planning policy and manual	28/34	22/28	78.6
National tuberculosis management protocol	16/34	13/16	81.3
Guidelines for management of sexual and gender-based violence	21/34	10/21	47.6

➡ See details in Annex 1.2.

MEDICAL EQUIPMENT

Health facilities were assessed for 17 pieces of basic equipment required to provide HIV, STI, TB, and GBV services (see list in section 2 of the questionnaire).

Table 6. Availability of Basic Medical Equipment

Health facilities with all basic equipment	Health facilities with 50% (8) or more pieces of basic equipment	Health facilities with less than 50% (8) pieces of basic equipment
3/34 (8.8%)	23/34 (67.6%)	8/34 (23.5%)
Poro Sapot		CIS Bomana
St Mary's Medical Centre		Gordons Clinic
St Paul's		Jacksons Air Base
		PNG EI Clinic
		St Therese Clinic
		Badili Clinic
		Pari Clinic
		Vabukori clinic

➡ See Annex 1.3 for details of health facility names in each category.

HUMAN RESOURCES

Table 7. Number of Staff in the Health Facilities

Carder	Number of full-time staff	Number of part-time staff	Number staff on duty on day of assessment
Specialist	11	20	7
Medical officers	25	4	20
Laboratory scientists/ assistants	18		15
Pharmacists and dispensers	14		7
Health management information system personnel/M&E officers	32		29
Full-time/dedicated health facility managers	35		32
Social workers	11		10
Health extension officers	25		11
Nurses and midwives	164		125
Dental officers	11		7
Community health workers	133		91
Hygiene staff	58		35
Revenue clerks	33		25
Lay counselors	13		12
Volunteers/unsalaried staff	115		105
Total	699	24	531 (76%)

➡ See Annex 1.3 for details of health facility names in each category.

EXPOSURE TO RECENT TRAINING

Managers were asked how many staff members received in-service training on specific interventions in the past three years.

Table 8. Exposure to Recent Training in HIV Counseling and Testing

	Number	Percentage
Health facilities providing HTC with at least two health workers trained in HIV counseling only	8/26	30.8
Health facilities providing HTC with at least two health workers trained in HIV counseling and testing	17/26	65.4
Health facilities providing HTC with at least two health workers trained in testing using both Determine HIV Rapid Test and StatPak (screening and confirmatory tests)	6/26	23.1

Table 9. Exposure to Recent Training in Prevention of Parent-to-Child Transmission of HIV (PPTCT)

	Number	Percentage
Number of health facilities providing antenatal care	18/34	52.9
ANC sites with at least one health worker trained in HIV counseling and testing	15/18	82.3
ANC sites with at least one health worker trained in IMAI	9/18	50.0

Table 10. Exposure to Recent Training in HIV Care and Treatment

	Number	Percentage
Health facilities with at least one health worker trained in IMAI	13/14	92.9
Health facilities with at least one health worker trained on TB management	9/14	64.3
Health facilities with at least two health workers trained in STI	9/14	64.3
Health facilities with at least two health workers trained in screening and management of GBV	7/14	50.0
Health facilities with at least two staff trained in family planning and can administer oral contraceptives	5/14	35.7
Health facilities with at least two staff trained to administer long-term or permanent contraception	4/14	28.6
Health facilities with at least one staff trained in infection control/universal precautions in handling blood and other body fluids	8/14	57.1
Health facilities with at least one staff trained in drug and supplies management	2/14	14.3
Health facilities with at least one staff trained in health management information system	8/14	57.1
Health facilities with at least one lay counselor or peer educator trained on basic HIV counseling	10/14	71.4

➡ See Annex 1.5 for details on number of health workers who have received recent training in each health facility.

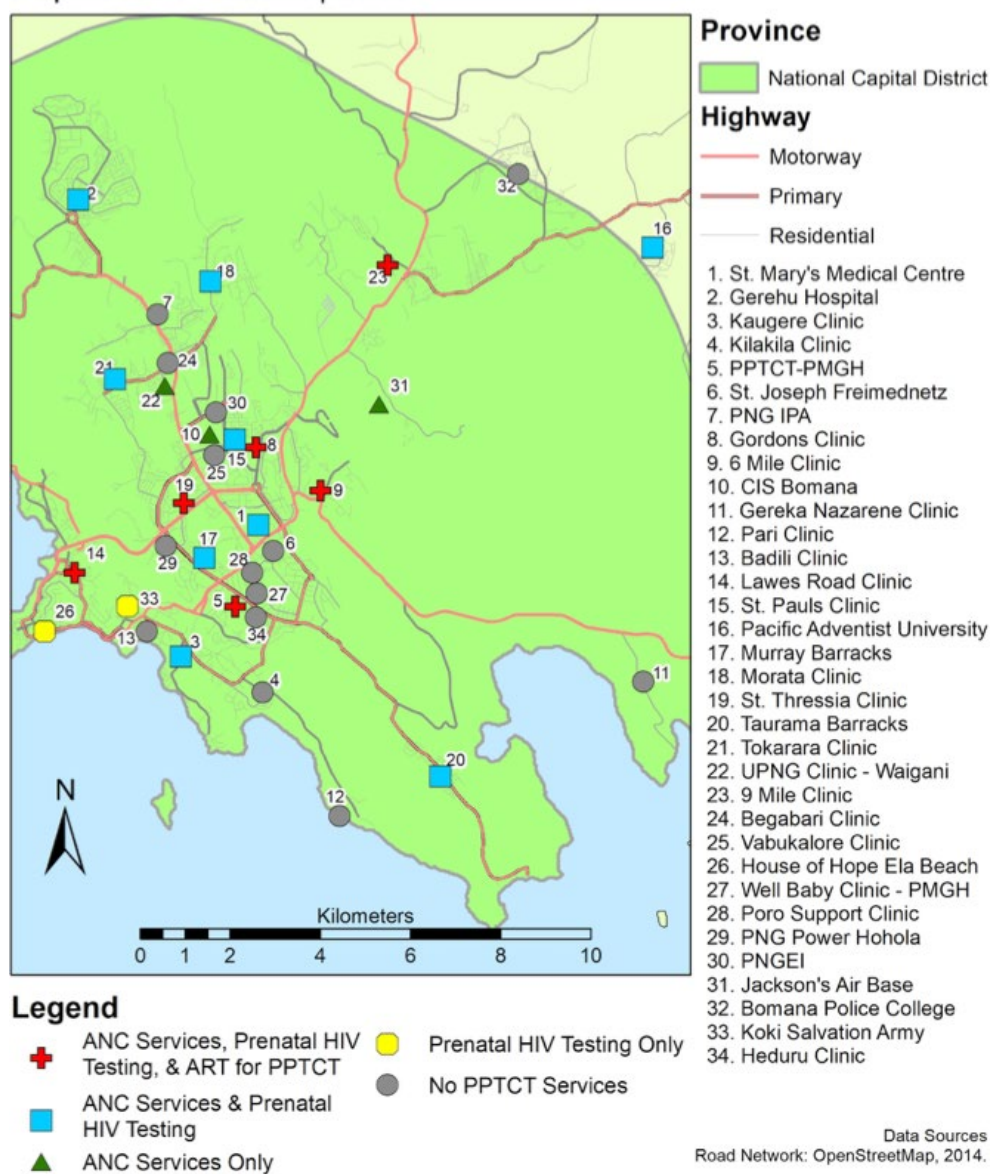
DISTRIBUTION OF HIV, STI, TB, AND GBV SERVICES

Map 5 illustrates the location of facilities in NCD in relation to major road networks, symbolized by their level of PPTCT service delivery. Health facilities providing ANC services, prenatal HIV testing, and ART for PPTCT (red crosses); ANC services and prenatal HIV testing (blue squares); ANC services only (green triangles); prenatal HIV testing only (yellow squares); or no ANC services (gray circles).

The health facility survey showed that six clinics provide comprehensive PPTCT services, i.e., ANC, prenatal HIV testing, and ART; nine clinics provide ANC and prenatal HIV testing only; three clinics provide ANC services only; two clinics provide HIV testing only while 14 clinics do not provide any of the services.

Map 5. Availability of Services for Prevention of Parent-to-Child Transmission of HIV

Availability of Services for Prevention of Parent-to-Child Transmission of HIV in National Capital District Papua New Guinea | 2017

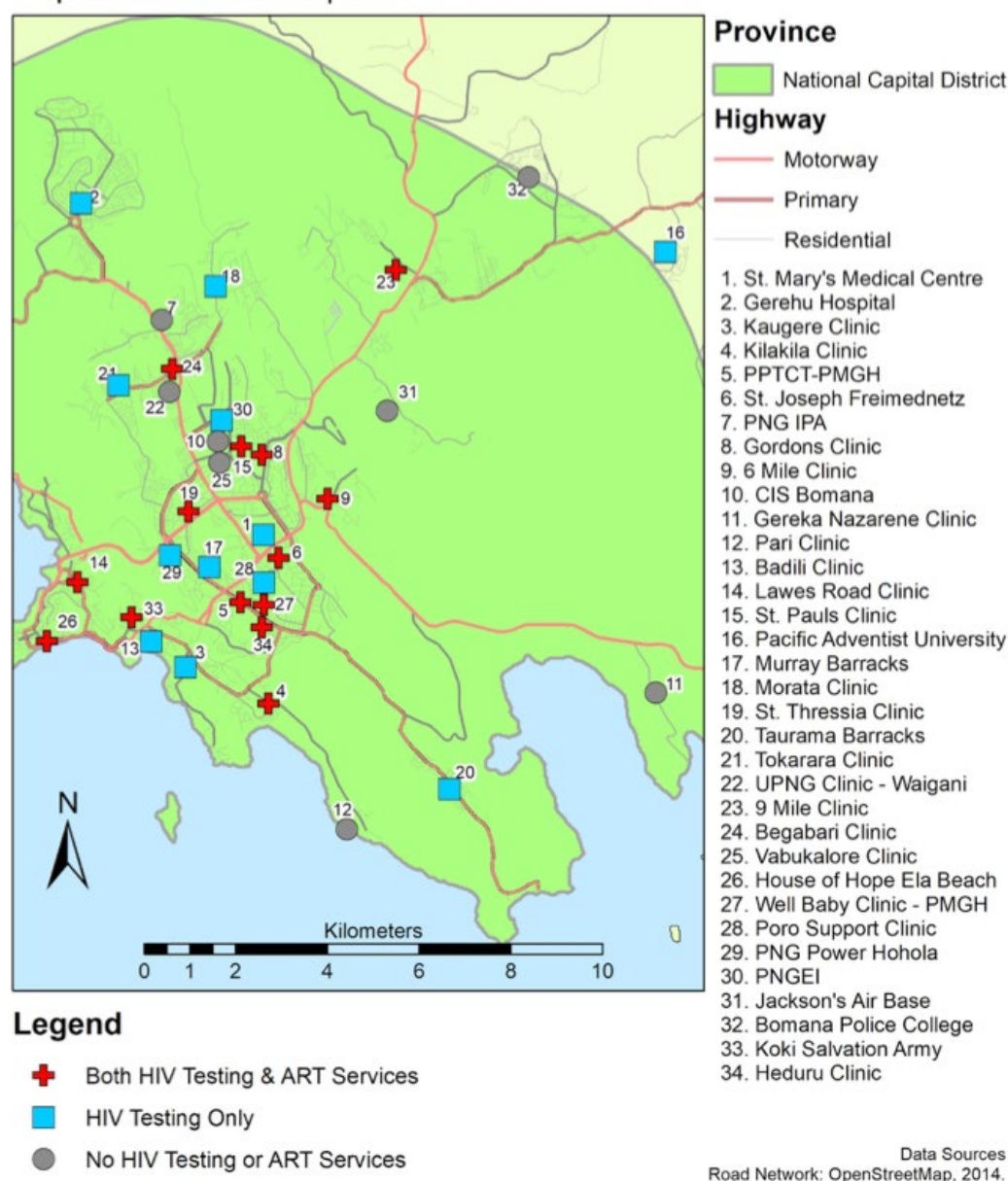


Map 6 illustrates the location of facilities in NCD, symbolized by whether they provide both HIV testing and ART services (red crosses), HIV testing only (blue squares), or no HIV testing or ART services (gray circles) in relation to major road networks. No facilities provide ART services without providing HIV testing.

The health facility survey showed that fourteen clinics provide both HIV testing and ART services, 12 clinics provide HIV testing only, and eight clinics provide neither HIV testing nor ART services.

Map 6. Availability of HIV Testing and Antiretroviral Therapy Services

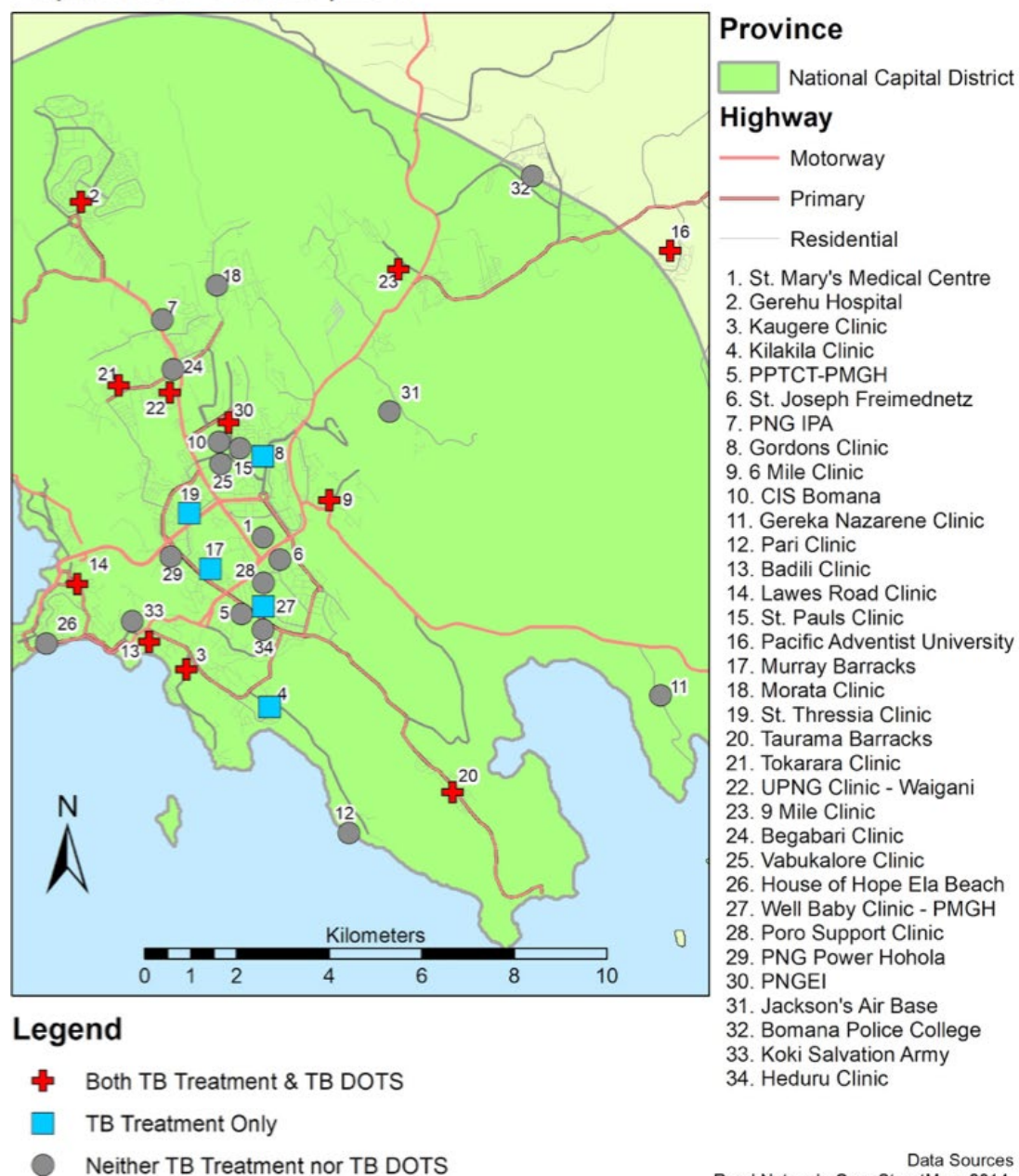
Availability of Services for HIV Testing vs ART in National Capital District Papua New Guinea | 2017



Map 7 illustrates the location of facilities in NCD, symbolized by their level of TB care – both TB treatment and TB Directly Observed Treatment (DOT) (red crosses, 11 clinics), TB treatment but no TB DOT (blue squares, five clinics), neither TB treatment nor TB DOT (gray circles, 18 clinics) in relation to major road networks.

Map 7. Availability of Tuberculosis Treatment Services

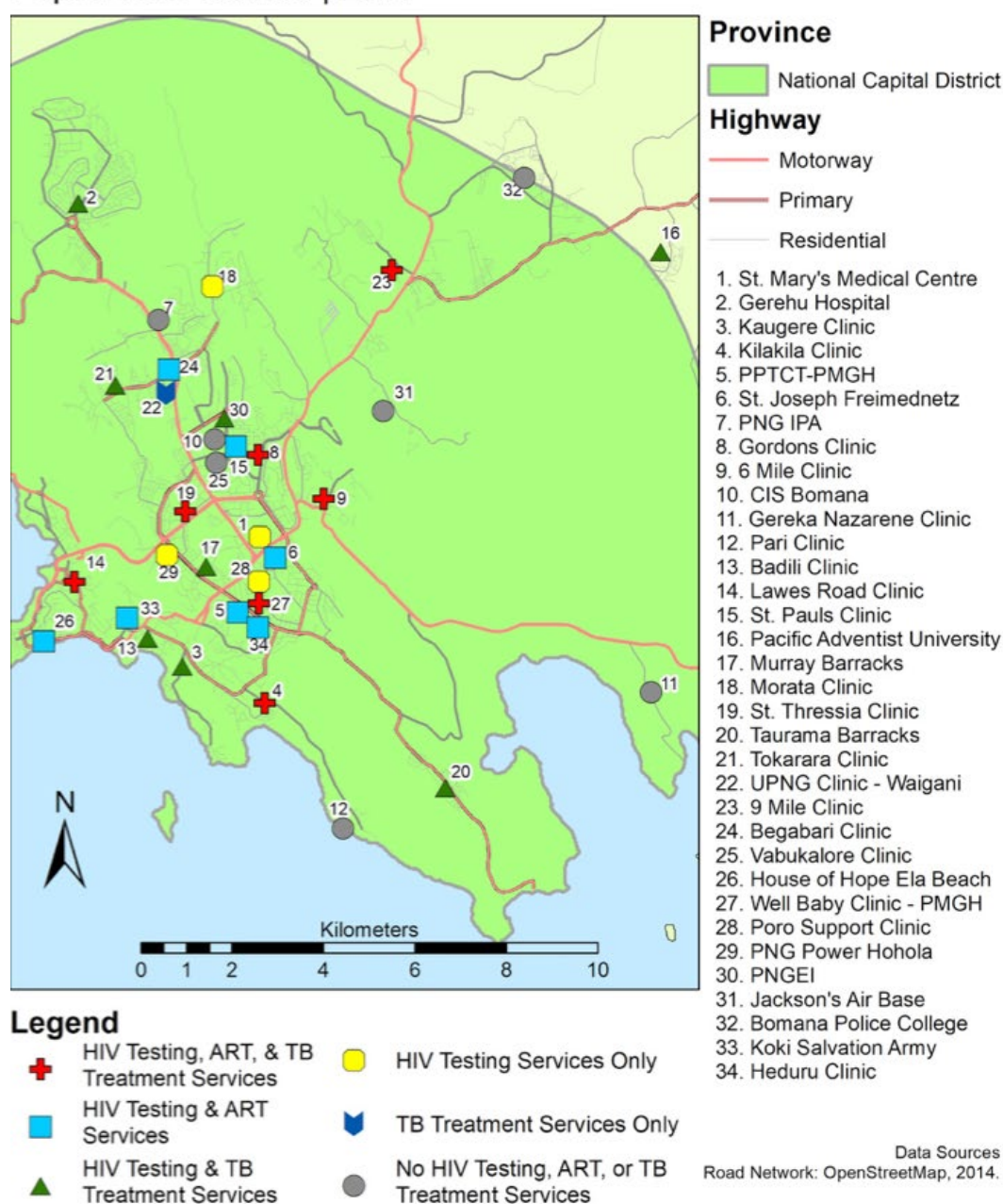
Availability of Services for TB Treatment vs TB DOTS in National Capital District Papua New Guinea | 2017



Map 8 illustrates the location of facilities in NCD, symbolized by their scope of service delivery for management of TB/HIV co-infections. Seven clinics (red crosses) provide HIV testing, ART, and TB treatment; seven clinics (blue squares) provide HIV testing and ART but no TB treatment; eight clinics (green triangles) provide HIV testing and TB treatment but no ART; four clinics (yellow rounded squares) provide HIV testing only; one clinic (blue arrow) provides TB treatment only; and seven clinics (gray circles) provide none of the services.

Map 8. Availability of Services for HIV Testing, ART, and Tuberculosis

Availability of Services for HIV Testing, ART, and TB Treatment in National Capital District Papua New Guinea | 2017

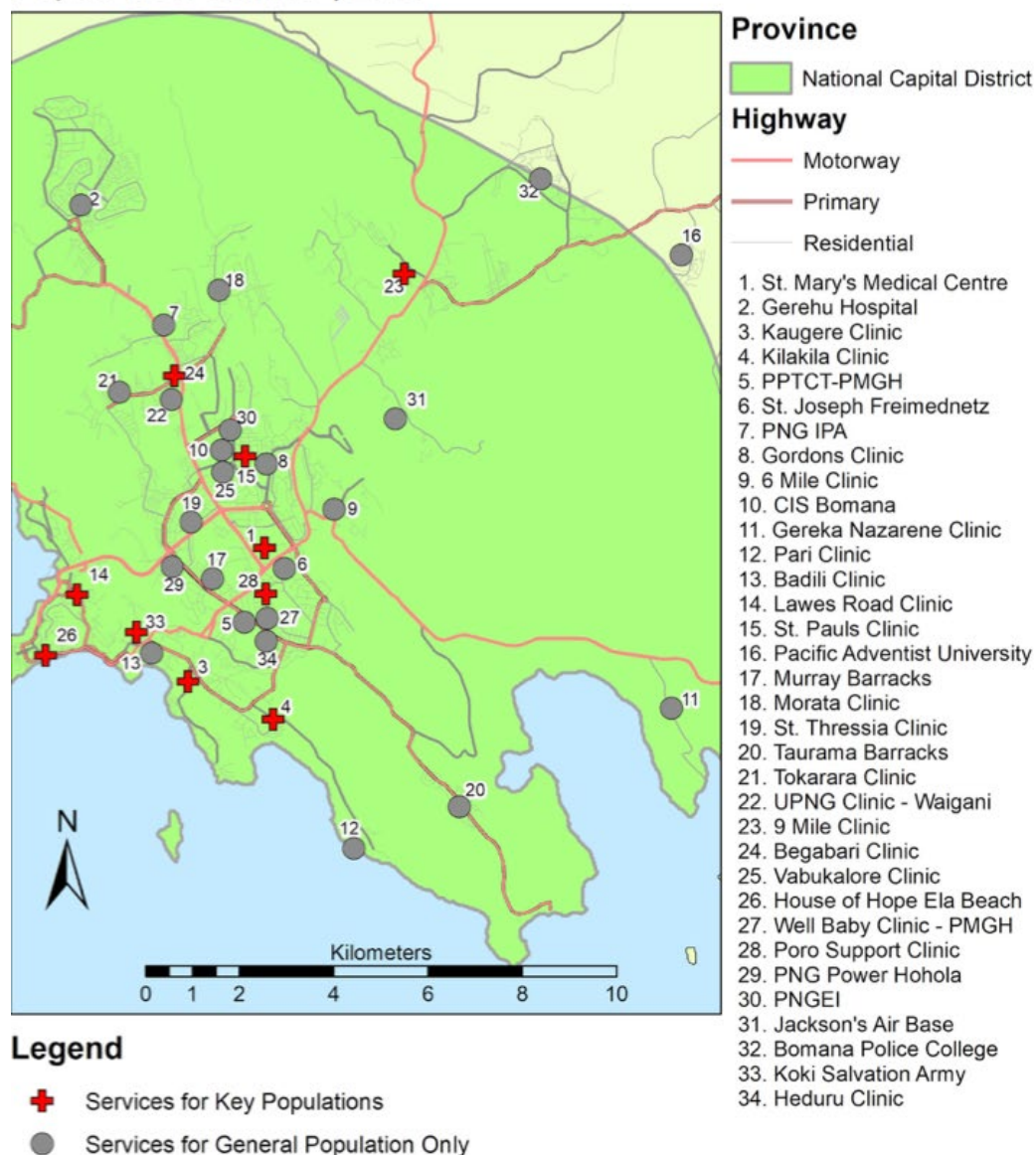


Map 9 illustrates the location of facilities in NCD, symbolized by whether the facility provides services tailored to key populations (red crosses) or not (gray circles) in relation to major road networks.

A health facility was categorized as providing HIV/STI services tailored to key populations if the service was provided by a health worker who has received additional training to work with key populations and/or HIV/STI services are provided in an area designated specifically for manage key populations.

Map 9. Availability of Services Tailored to Key Populations

Availability of Services Tailored to Key Populations in National Capital District Papua New Guinea | 2017

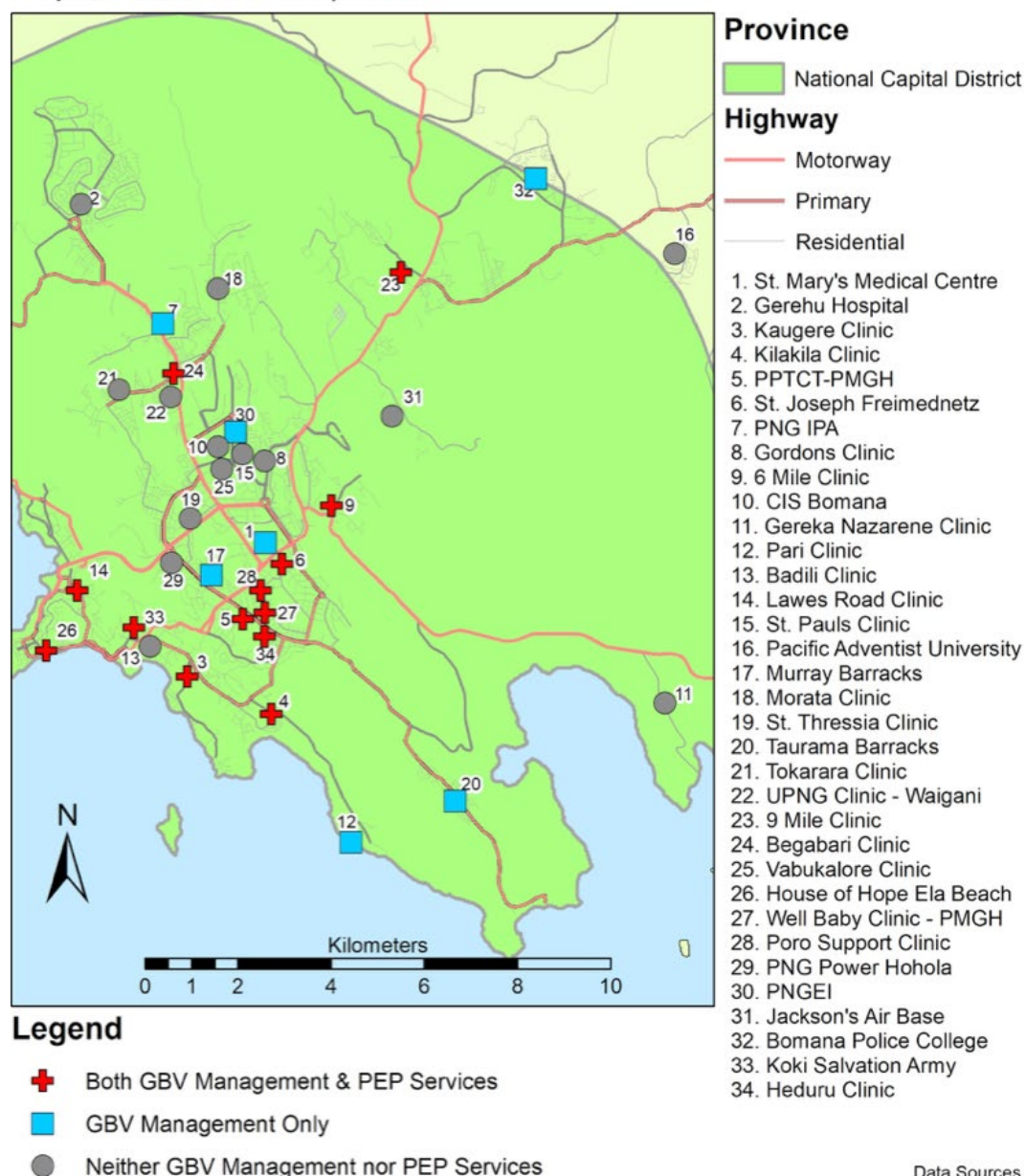


Data Sources
Road Network: OpenStreetMap, 2014.

Map 10 illustrates the location of facilities in NCD, symbolized by whether they provide GBV management services and PEP (red crosses, 13 clinics), GBV management only (blue squares, seven clinics), or neither (gray circles, 14 clinics) in relation to major road networks.

Map 10. Availability of Services for Gender-Based Violence Management

Availability of Services for GBV Management vs PEP Services in National Capital District Papua New Guinea | 2017



MEDICINES AND COMMODITIES

The interviewers asked whether the following essential drugs and medical supplies were available in stock on the day of the interview.

Table 11. Essential Commodities for HIV Testing and Counseling

	Number	Percentage
Health facilities providing HIV counseling and testing	26/34	76.5
Health facilities providing HIV counseling and testing and have Determine HIV Rapid Test strips available	23/26	88.5
Health facilities providing HIV counseling and testing and have Stat Pak HIV testing strips available	21/26	80.8
Health facilities providing HTC with male condoms in stock	20/26	76.9
Health facilities providing HTC with male condoms and lubricants in stock	10/26	38.5
Health facilities providing HTC with female condoms in stock	17/26	65.4

Table 12. Essential Medicines and Commodities for HIV Care and Treatment

	Number	Percentage
Health facilities providing ART	14/34	41.2
Health facilities providing ART and have Determine HIV Rap-id Test strips available	13/14	92.9
Health facilities providing ART and have Stat Pak HIV testing strips available	13/14	92.9
Health facilities providing ART with first line ART regimen for adults in stock	14/14	100.0
Health facilities providing ART with first line ART regimen for children aged 3–10 years in stock	5/14 ²	35.7
Health facilities providing ART with first line ART regimen for children aged less than 3 years old in stock	1/14 ³	7.1
Health facilities providing ART and have Cotrimoxazole tablets for opportunistic infection (OI) prophylaxis for adults	13/14	92.9
Health facilities providing ART and have Isoniazid for Isoniazid Preventive Therapy (IPT)	12/14	85.7
Health facilities providing ART and have Cotrimoxazole tablets for OI prophylaxis for children	5/14	35.7
Health facilities providing ART with Fluconazole in stock	5/14	35.7
Health facilities providing ART with basic equipment for patient examination	9/14	64.3
ART site which provides services tailored to key populations	7/14	50.0
Health facilities providing ART and have emergency contraceptives ⁴ in stock	6/14	42.9

² These were Well Baby Clinic, St Joseph's, House of Hope Ela Beach, PMGH, and Gordons. While Well Baby Clinic is the only clinic that formally runs a pediatric ART clinic, other health facilities mentioned that they keep a few doses for children to cater for instances when the child attends the clinic with his/her parents.

³ Well Baby Clinic.

⁴ Blood pressure machine, stethoscope, adult weighing scale, thermometer, examination gloves, examination bed with lithotomy poles

Table 13. Essential Medicines and Commodities for PPTCT

	Number	Percentage
Health facilities providing ANC	18/34	52.9
Health facilities providing ANC and have Determine HIV Rapid Test strips available	14/18	77.8
Health facilities providing ANC and have Stat Pak HIV test strips available	14/18	77.8
Health facilities providing ANC with first line ART regimen for adults in stock	7/18 ⁵	38.9

Table 14. Essential Medicines and Commodities for STI Management

	Number	Percentage
Health facilities providing STI management	32/34	94.1
Health facilities providing STI management and have the 10⁶ essential STI medicines	3/32	9.4
Health facilities providing STI management and have Determine HIV Rapid Test strips available	23/32	71.9
Health facilities providing STI management and have Stat Pak HIV test strips available	21/32	65.6
Health facilities providing STI management and have essential equipment for STI examination⁷	5/32 ⁸	15.6
Health facilities providing STI management and have basic equipment for STI laboratory examination⁹	6/32 ¹⁰	18.8
Health facilities providing STI management and have a proctoscope	10/32	31.3
STI site with STI/HIV services tailored to key populations	11/32	34.4

Table 15. Essential Commodities for Tuberculosis Diagnosis and Treatment

	Number	Percentage
Health facilities providing TB treatment	16/34	47.1
Health facilities providing TB treatment and have category 11¹ TB treatment for initiation and continuation as fixed-dose combination (FDC) for adults	13/16	81.3
Health facilities providing TB treatment and have category 21² TB treatment for initiation and continuation as FDC for adults	12/16	75.0
Health facilities providing TB treatment and have category 11³ TB treatment for initiation and continuation as FDC for children	10/16	62.5
Health facilities providing TB treatment and have category 2¹⁴ TB treatment for initiation and continuation as FDC for children	10/16	62.5

⁵ Although St Paul Clinic is an ANC site and had ART in stock, it did not administer ART to pregnant women during the month preceding the survey. This is why this figure varies from information available in Annex 1.5.

⁶ Ciprofloxacin, amoxycillin, Azithromycin, Augmentin, Benzathine penicillin, Doxycycline, Tinidazole, Nystatin vaginal pessaries, Clotrimazole cream, Probenecid

⁷ Examination bed with lithotomy poles, light source/torch, (kidney dish/bowel and sponge holding forceps), sterilizing equipment

⁸ Poro Sappot, St Josephs, Kaugere, St Paul, St Mary's Medical Centre

⁹ Microscope, centrifuge or rotator, slides

¹⁰ Poro Sappot, St Mary's Medical Centre, Koki, Lawes Road, UPNG clinic, and St Paul's

¹¹ Rifampicin+isoniazid+pyrazinamide+ethambutol tablets (150 mg/75 mg/400 mg/275 mg) and rifampicin+isoniazid tablets (150 mg/75 mg)

¹² Streptomycin injection (Ig) and rifampicin+isoniazid+pyrazinamide+ethambutol tablets (150 mg/75 mg/400 mg/275 mg) and rifampicin+isoniazid+ethambutol tablets

¹³ Rifampicin+isoniazid+pyrazinamide tablets (60 mg/30 mg/150 mg) and isoniazid tablets for TB treatment (100- 300 mg) and ethambutol tablets (100 mg)

¹⁴ Rifampicin+isoniazid+pyrazinamide tablets (60 mg/30 mg/150 mg) and isoniazid tablets for TB treatment (100- 300 mg) and ethambutol tablets (100 mg) and streptomycin injection

Table 16. Contraceptives

	Number	Percentage
Health facilities with combined oral contraceptives (COCs) in stock	26/34	76.5
Health facilities with progestin only pill (POP) in stock	20/34	58.9
Health facilities with emergency contraceptives in stock	12/34	35.3
Health facilities with injectable contraceptives in stock	23/34	67.7
Health facilities with male condoms but no lubricants	14/34	41.2
Health facilities with male condoms and lubricants	12/34	35.3
Health facilities with female condoms	22/34	64.7

ACCESS TO LABORATORY SERVICES

Table 17. Laboratory Services for ART Sites

Laboratory services	Test available on site		Test done off site; results available in two weeks ¹⁵		Test not available	
	#	%	#	%	#	%
HIV antibody testing	12	85.7	0	0.0	2	14.3
CD4 test	11	78.6	2	14.3	1	7.1
Point of care CD4 (PIMA)	10	71.4	na	na	na	na
Hemoglobin	6	42.9	6	42.9	2	14.3
Full blood count	1	7.1	11	78.6	2	14.3
Blood glucose	6	42.9	4	28.6	4	28.6
RPR or VDRL	5	35.7	6	42.9	3	21.4
Liver function tests	1	7.1	10	71.4	3	21.4
Renal function tests	1	7.1	10	71.4	3	21.4
HIV viral load testing	0	0.0	2	14.3	12	85.7
PCR for EID	0	0.0	0	0.0	14	100
Rapid syphilis test	9	64.3	0	0.0	5	35.7
TB microscopy	2	14.3	1	7.1	11	78.6
Xpert TB/MDR test	1	7.1	2	14.3	11	78.6

N.B. – Among the viral load testing pilot sites (i.e. Koki, Begabari, and Heduru clinics) only Begabari and Heduru clinics send samples for testing in the month preceding the survey. VL testing had scaled down due to human resource challenges at CPHL Table 15. Essential Commodities for Tuberculosis Diagnosis and Treatment

¹⁵ Coding was adjusted to capture most prevalent data (the WHO questionnaire sets a standard of one week but majority of sites receive the results within two weeks). Sites offering off-site testing but do not receive results in two weeks were categorized as “test not available.”

Table 18. Laboratory Services for Health Facilities Providing TB Treatment

Laboratory services	Test available on site		Test done off site; results available in two weeks ¹⁶		Test not available	
	#	%	#	%	#	%
HIV antibody testing	13/16	81.3	0/16	0.0	3/16	18.8
Hemoglobin	6/16	37.5	3/16	18.8	7/16	43.7
Full blood count	0/16	0.0	7/16	43.8	9/16	56.2
Blood glucose	9/16	56.3	1/16	6.3	6/16	37.5
Liver function tests	0/16	0.0	5/16	31.3	11/16	68.7
Renal function tests	0/16	0.0	6/16	37.5	10/16	62.5
TB microscopy	4/15	26.7	1/15	6.7	10/15	66.7
Xpert TB/MDR test	2/15	13.3	3/15	20.0	10/15	66.7
Chest X-ray	0/16	0.0	2/16	12.5	14/16	87.5
Tuberculin test	0/16	0.0	0/16	0.0	16/16	100.0

Table 19. Management of Health Information

M&E/Health Management Information System (HMIS) Capacity	Number	Percentage
Health facilities with functioning computer	25/34	73.5
Health facilities with functioning Internet service	10/34	29.4
Health facilities with at least one dedicated M&E/HMIS staff member	12/34	35.3
Health facilities with at least one staff member trained in M&E/HMIS	13/34	38.2
HCT sites with all relevant HCT tools	15/19*	78.9
HCT sites that reported SURV 1 to NCDHS	22/26	84.6
HCT sites that reported SURV 1 to NCDHS on time	18/26	69.2
ART sites with all relevant ART tools	0/6*	0.0
ART sites that reported SURV 2 to NCDHS	11/14	78.6

*Denominator for HCT sites is 26 and for ART sites, 14; however, data relating to M&E tools were missing among seven HCT sites and eight ART sites.

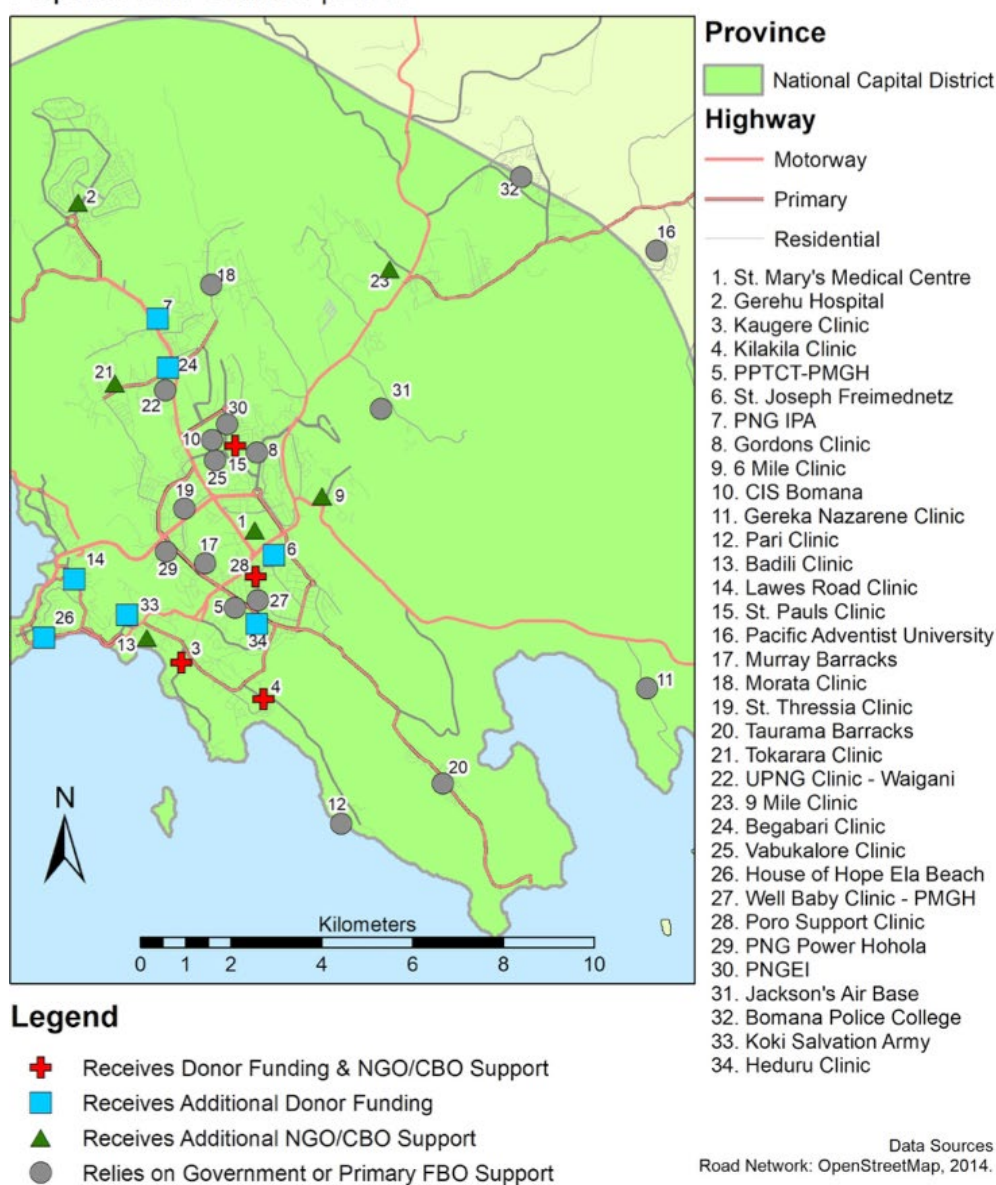
¹⁶ Coding was adjusted to capture most prevalent data (the WHO questionnaire sets a standard of one week but majority of sites receive the results within two weeks). Sites offering off-site testing but do not receive results in two weeks were categorized as "test not available."

SOURCES OF FINANCING

Map 11 shows locations and funding support. Red crosses represent government or non-governmental organization (NGO) facilities that receive additional support from donors and NGO/CBO (four); blue squares represent government or NGO facilities that receive additional support from donors only (seven); green triangles represent government or NGO facilities that receive additional NGO/CBO support but no donor funding (six). Gray circles represent facilities that rely on funding from government or primary FBOs (17).

Map 11. Sources of Financing for HIV Services

Sources of Financing for HIV Services in National Capital District Papua New Guinea | 2017



ANNEX 1.1 Ownership and Infrastructure

Electorate	Facilities in NCD	Ownership	Type of Health facility	Has piped water	Functional Toilet	Electricity	Telephone Service	Computer	Internet Service	Inpatient beds
Port Moresby North East	6 Mile Clinic	Govt	Urban Clinic	•	•	•	•	•		
	9 Mile Clinic	NGO/FBO	Urban Clinic	•	•	•	•	•		
	Bomana Police College	Govt	Urban Clinic	•	•	•	•	•		
	CIS Bomana	Govt	Urban Clinic	•	•	•		•		•
	Gordons Clinic	Govt	Urban Clinic	•	•	•		•		
	Heduru Clinic	Govt	Referral Hospital	•	Nonfunctional	•	•	•		
	Jackson's Air Base	Govt	Urban Clinic	•	•	•		•		
	PAU Clinic	NGO/FBO	Urban Clinic	•	•	•	•	•	•	•
	PNGEI	Govt	Urban Clinic	•	•	•	•			
	PPTCT - PMGH	Govt	Referral Hospital	•	•	•	•			
	Well Baby Clinic - PMGH	Govt	District Hospital	•	•	•				
	Poro Support Clinic	NGO/FBO	Urban Clinic	•	•	•		•	•	
	St. Joseph Freinademetz	NGO/FBO	Health Center	•	•	•	•	•	•	
	St. Mary's Medical Centre	NGO/FBO	Health Center	•	•	•	•	•	•	
Port Moresby North West	Begabari Clinic	NGO/FBO	Urban Clinic	•	•	•	•	•	•	
	Gerehu Hospital	Govt	District Hospital	•	•	•		•	•	•
	Morata Clinic	Govt	Urban Clinic	•	•	•				
	Murray Barracks	Govt	Urban Clinic	•	•	•	•			
	PNG IPA	Govt	Urban Clinic	•	•	•	•	•	•	
	PNG Power Hohola	NGO/FBO	Urban Clinic	•	•	•	•	•		
	St. Pauls Clinic	NGO/FBO	Urban Clinic	•	•	•		•		
	St. Thressia Clinic	NGO/FBO	Urban Clinic	•	•	•	•			
	Tokarara Clinic	Govt	Urban Clinic	•	•	•		•		
	UPNG Clinic - Waigani	Govt	Urban Clinic	•	•	Unreliable	•	•	•	
	Badili Clinic	Govt	Urban Clinic	•	Nonfunctional	•	•	•		
Port Moresby South	Gereka Nazarene Clinic	NGO/FBO	Urban Clinic	Rainwater	Nonfunctional	•	•	•		
	House of Hope, Ela Beach	NGO/FBO	Urban Clinic	•		•	•	•		
	Kaugere Clinic	NGO/FBO	Health Center	Covered well	•	•				
	Kilakila Clinic	Govt	Urban Clinic	•		•	•	•	•	
	Koki Salvation Army	NGO/FBO	Health Center	•	•	•	•	•	•	
	Lawes Road Clinic	Govt	Urban Clinic	•	•	•	•	•		
	Pari Clinic	NGO/FBO	Aid Post	Tank/truck		•	•			
	Taurama Barracks	Govt	Urban Clinic	•	•	•	•			
	Vabukore Clinic	Govt	Urban Clinic	•	Nonfunctional	Unreliable		•		

ANNEX 1.2 Availability of National Protocols and Guidelines

Electorate	Facilities in NCD	HIV care & Treatment Guidelines	National HCT Guidelines	Nat. Guidelines for STI mgnt	Family Planning Policy and Manual	National TB Mgnt Protocol	Guidelines for GBV Mgnt
Port Moresby North East	6 Mile Clinic	•	•	•	•	•	X
	9 Mile Clinic	•	•	•	•	•	•
	Bomana Police College			X	X		X
	CIS Bomana		•	•	•	•	X
	Gordons Clinic	•	•	•	•	X	
	Heduru Clinic	•	•	•			X
	Jackson's Air Base			•	•		
	PAU Clinic	†	•	•	•	•	■
	PNGEI			•	X		
	PPTCT - PMGH	•	•	•	•		X
	Well Baby Clinic - PMGH	•	•			X	X
	Poros Support Clinic	■	•	•	•	■	•
	St. Joseph Freinademetz	•	•	•			•
	St. Mary's Medical Centre	■	•	•	•	■	•
Port Moresby North West	Begabari Clinic	•	•	•	■		•
	Gerehu Hospital	■	•	•	•	•	
	Morata Clinic		X	•	•		
	Murray Barracks		•	•	•	•	X
	PNG IPA			X	X		X
	PNG Power Hohola		•	X			
	St. Pauls Clinic	•	•	•	■	■	■
	St. Thressia Clinic	•	•	•	•	•	
	Tokarara Clinic	■	•	X	•	•	X
	UPNG Clinic - Waigani	■	■	•	•	X	
Port Moresby South	Badili Clinic	■	X	•	•	•	
	Gereka Nazarene Clinic			X	X		
	House of Hope, Ela Beach	•	•	•	X		•
	Kaugere Clinic	■	•	•	•	•	•
	Kilakila Clinic	•	•	•	•	•	•
	Koki Salvation Army	•	•	•	•		•
	Lawes Road Clinic	•	•	•	•	•	•
	Pari Clinic			X	X		X
	Taurama Barracks	■	•	•	•	•	X
	Vabukore Clinic				•		
# of facilities that provide service and have SOPs		14	24	26	22	13	10
% of facilities that provide service and have SOPs*		100.0	92.3	81.3	78.6	81.3	47.6

Keys • | Provide service and have guidelines X | Provide service but do not have guidelines ■ | Do not provide service but have guidelines blank | Do not provide service and do not have guidelines

*denominator is taken from Table 5

ANNEX 1.3 Availability of Basic Medical Equipment

Electorate	Facilities in NCD	Blood Pressure machine and cuff	Stethoscope	Adult weighing scale	Thermometer(s)	Latex Gloves	Refrigerator	Vaginal Speculum	Proctoscope	Examination bed with lithomy poles	Light source/ torch for vaginal examination	Kidney dish/ bowel and sponge holding forceps	Sterilizing equipment	Microscope	Centrifuge	Rotator	Slides	Examination bed in consultation room	Total # of equipment available	% out of 17 required equipment
Port Moresby North East	6 Mile Clinic	•	•	•		•		•				•		•				•	8	47.1
	9 Mile Clinic	•	•	•	•	•	•			•		•	•	•	•			•	12	70.6
	Bomana Police College	•	•	•	•	•	•	•					•					•	8	47.1
	CIS Bomana	•	•	•	•								•					•	6	35.3
	Gordons Clinic					•	•						•						3	17.6
	Heduru Clinic	•		•	•	•	•	•			•	•	•			•		•	11	64.7
	Jackson's Air Base	•	•	•	•	•	•											•	7	41.2
	PNGEI		•	•	•	•	•											•	6	35.3
	PAU Clinic	•	•	•	•	•	•	•				•		•				•	10	58.8
	PPTCT - PMGH	•	•	•	•	•	•	•	•								•	•	10	58.8
	Well Baby Clinic - PMGH	•	•	•	•	•	•										•	•	8	47.1
	Poro Support Clinic	•	•	•	•	•	•	•	•	•	•	•	•	•	•	•	•	•	17	100.0
	St. Joseph Freinademetz	•	•	•	•	•	•	•		•	•	•	•	•	•	•	•	•	12	70.6
	St. Mary's Medical Centre	•	•	•	•	•	•	•	•	•	•	•	•	•	•	•	•	•	17	100.0
Port Moresby North West	Begabari Clinic	•	•	•	•	•	•	•	•		•	•	•	•	•			•	14	82.4
	Gerehu Hospital	•	•	•	•	•	•	•			•	•		•			•	•	12	70.6
	Morata Clinic	•	•	•		•	•	•				•					•	•	9	52.9
	Murray Barracks	•	•	•	•	•	•	•					•					•	9	52.9
	PNG IPA	•	•	•	•	•		•				•						•	8	47.1
	PNG Power Hohola	•	•	•	•	•	•	•	•			•	•					•	11	64.7
	St. Pauls Clinic	•	•	•	•	•	•	•	•	•	•	•	•	•	•	•	•	•	17	100.0
	St. Thressia Clinic	•		•		•	•	•					•					•	7	41.2
	Tokarara Clinic	•				•	•	•			•	•	•	•			•	•	10	58.8
Port Moresby South	UPNG Clinic - Waigani	•	•		•	•	•	•	•		•	•		•	•	•	•	•	14	82.4
	Badili Clinic	•	•	•		•	•					•						•	6	35.3
	Gereka Nazarene Clinic		•	•	•	•	•	•				•						•	8	47.1
	House of Hope, Ela Beach	•	•	•	•	•	•	•		•	•						•	•	11	64.7
	Kaugere Clinic	•	•	•	•	•	•	•	•	•	•	•	•					•	13	76.5
	Kilakila Clinic	•	•	•		•	•	•	•	•	•	•		•			•	•	13	76.5
	Koki Salvation Army	•	•	•	•	•	•	•	•	•		•		•	•	•	•	•	15	88.2
	Lawes Road Clinic	•	•	•	•	•	•	•		•			•	•	•	•	•	•	14	82.4
	Pari Clinic	•				•	•												3	17.6
	Taurama Barracks	•	•	•	•	•	•	•				•						•	9	52.9
	Vabukore Clinic	•		•		•	•											•	5	29.4
# of facilities with med equipment		31	28	30	25	33	31	25	10	10	12	20	16	13	8	7	13	31		
% of facilities with med equipment		91.2	82.4	88.2	73.5	97.1	91.2	73.5	29.4	29.4	35.3	58.8	47.1	38.2	23.5	20.6	38.2	91.2		

ANNEX 1.4 Number of Health Workers in Each Facility

Electorate	Facilities in NCD	Full-time specialist doctors	Part-time specialist doctors	Full-time medical officers	Part-time medical officers	Laboratory Technicians	Pharmacists and dispensers	HMIS/ M&E Officers	Health service managers	Social workers	Health extension officers	Certified/ registered nurses	Dental officers	community health workers	Hygiene staff	Revenue Clerks	Lay counsellors	Volunteers
Port Moresby North East	6 Mile Clinic		4	1		2			1		2	13	2	7	6	3		
	9 Mile Clinic				1	2			1		1	5		8	2			1
	Bomana Police College								1			1		1				
	CIS Bomana											1		2				
	Gordons Clinic								1			10		11	3	2		4
	Heduru Clinic			2	2		1	3	1			1		2	1		4	
	Jackson's Air Base								1			3		1	1			
	PNGEI								1			1						
	PAU Clinic		1									4						
	PPTCT - PMGH	8		4			3	7	2	1		2		1	1	1		
	Well Baby Clinic - PMGH	2	1	4					2			3		4	1	1	1	
	Poro Support Clinic							3	2	1		2		1	1		1	80
	St. Joseph Freinademetz			1				2	2			1		4	1	2		3
	St. Mary's Medical Centre	1		2	1	2	3	1	1	1	1	4	2		2	2		
Port Moresby North West	Begabari Clinic		1					1	1	2		1		3	1	1	1	
	Gerehu Hospital		4	6		6	7	7	3		13	41		35	14	8		
	Morata Clinic											5		4	1			
	Murray Barracks			1							1	2		1	3			
	PNG IPA								1			1			1			
	PNG Power Hohola								1	1		1		1				
	St. Pauls Clinic		1			1		1	1	1	1	5		4	2	2		5
	St. Thressia Clinic		1									4		8	1	1		1
	Tokarara Clinic					1			1		1	8		7	2	2		4
	UPNG Clinic - Waigani			1					1			4		1	1			
Port Moresby South	Badili Clinic		2						1		1	4		3	2	2		4
	Gereka Nazarene Clinic		1						1			4		1	1			
	House of Hope, Ela Beach											2						
	Kaugere Clinic			1				1	2	2	3	6	2	9	4	2	2	5
	Kilakila Clinic					1		1	1	2				2		1	4	5
	Koki Salvation Army			1		1		3	1			2		1	1	1		
	Lawes Road Clinic			1		2		2	1		1	15		8	3	1		2
	Pari Clinic								1			1		2				1
	Taurama Barracks		4						1			5	5		1	1		
	Vabukore Clinic								1			2		1	1			
Total # of personnel		11	20	25	4	18	14	32	35	11	26	164	11	133	58	33	13	115
# of sites with at least 1 staff		3	10	12	3	9	4	12	28	8	10	33	4	28	26	17	6	12

ANNEX 1.5 Number of Health Workers in each Facility who Received in-service Training Three Years Prior to the Survey

Electorate	Facilities in NCD	HCT	Both Determine & StatPak	PPTCT	IMAI	TB Mgt	STI Mgt	GBV Mgt	Family Planning (short-term)	Family Planning (long-term)	Infection Control	Drugs supply and Mgt	HMIS
Port Moresby North East	6 Mile Clinic	2	2	1	2	2	1	2		2			2
	9 Mile Clinic	4		1	1	2	2		4	1			
	Bomana Police College			1									
	CIS Bomana	1	1	1		2			1				
	Gordons Clinic	3	3	1	2	3	1	1	1	1	1		3
	Heduru Clinic	3		1	4		4						2
	Jackson's Air Base	1		1			1						
	PNGEI			1									
	PAU Clinic		1			1	1		1	1	1		1
	PPTCT - PMGH			1	1	1	1	1	6	3	3		2
	Well Baby Clinic - PMGH	2	1	1	2						1	1	
	Poro Support Clinic	3	2	1	4	3	4	4	4		4	1	1
	St. Joseph Freinademetz	5		1	3		1				3		
	St. Mary's Medical Centre			1		2	2	2	4	1	2	3	
Port Moresby North West	Begabari Clinic	4		1	4	1	2	5					
	Gerehu Hospital	5		1	2	4	1	1	2				
	Morata Clinic	1		1			1	1	9	1			
	Murray Barracks		2	1		2	2		2	1	1		
	PNG IPA			1									
	PNG Power Hohola			1									
	St. Pauls Clinic	2	5	1		2	4	2			1		2
	St. Thressia Clinic	2	5	1	1	1	2	1	13	4			
	Tokarara Clinic	7	1	1		2	2	1		1			
	UPNG Clinic - Waigani	2		1	1	2				1			
Port Moresby South	Badili Clinic	1		1		4	1		8				1
	Gereka Nazarene Clinic			1									
	House of Hope, Ela Beach	2		1	2		2	2			2		2
	Kaugere Clinic	6	1	1	1	2	3	4	2	2	1		1
	Kilakila Clinic	5		1	6	3	5	5	6				
	Koki Salvation Army	5		1	4		3	5			1	1	5
	Lawes Road Clinic	2	1	1	1	2	2	2	2	2	1		1
	Pari Clinic			1									
	Taurama Barracks			1	1		1						1
	Vabukore Clinic			1									
Total # of staff trained in past 3 years		68	25	33	42	41	49	39	65	21	22	6	24
# sites with at least 1 staff trained in the past 3 years		22	12	33	18	19	24	16	15	13	13	4	13

ANNEX 1.6 Availability of HIV, STI, TB, GBV, and Related Services

Electorate	Facilities in NCD	ANC	HCT	HIV testing in Pregnancy	PPTCT	ART	STI mgt	TB Treat't	KP friendly	GBV Mgt	HCT for TB Patients	TB DOTS	PEP	Family Planning	Outreach for KPs	Donor funded	NGO or CBO support*
Port Moresby North East	6 Mile Clinic	•	•	•	•	•	•	•		•	•	•	•	•			•
	9 Mile Clinic	•	•	•	•	•	•	•	•	•	•	•	•	•	•		•
	Bomana Police College						•			•				•			
	CIS Bomana		•				•	•		•	•	•		•			
	Gordons Clinic	•	•	•	•	•	•	•			•			•			
	Heduru Clinic		•			•	•			•	•		•			•	
	Jackson's Air Base	•					•							•			
	PAU Clinic	•	•	•			•	•	•			•		•			
	PNGEI	•					•							•			
	PPTCT - PMGH	•	•	•	•	•	•			•			•	•			
	Well Baby Clinic - PMGH		•			•		•		•	•		•		•		
	Poru Support Clinic		•				•		•	•	•		•	•	•	•	
	St. Joseph Freinademetz		•			•	•			•	•		•			•	
	St. Mary's Medical Centre	•	•	•			•		•	•				•			•
Port Moresby North West	Begabari Clinic		•			•	•		•	•			•			•	
	Gerehu Hospital	•	•	•			•	•			•	•		•			•
	Morata Clinic	•	•	•			•							•			
	Murray Barracks	•	•	•			•	•		•	•			•		•	
	PNG IPA						•			•				•		•	
	PNG Power Hohola		•				•										
	St. Pauls Clinic	•	•	•		•	•		•		•				•	•	•
	St. Thressia Clinic	•	•	•	•	•	•	•			•			•			
	Tokarara Clinic	•	•	•			•	•			•	•	•	•			•
Port Moresby South	UPNG Clinic - Waigani	•					•	•			•	•		•			
	Badili Clinic		•				•	•			•	•		•			•
	Gereka Nazarene Clinic						•							•			
	House of Hope, Ela Beach		•	•		•	•		•	•			•	•	•	•	
	Kaugere Clinic	•	•	•			•	•	•	•	•	•	•	•	•	•	•
	Kilakila Clinic		•			•	•	•	•	•	•		•	•	•	•	•
	Koki Salvation Army		•	•		•	•		•	•		•	•	•	•	•	
	Lawes Road Clinic	•	•	•	•	•	•	•	•	•	•	•	•	•	•	•	•
	Pari Clinic						•			•	•			•			
	Taurama Barracks	•	•	•			•	•		•	•	•		•			
	Vabukore Clinic													•			
# of facilities providing services		18	26	17	6	14	32	16	11	20	20	11	14	28	9	11	10
% of facilities providing services		54.5	78.8	51.5	18.2	42.4	97.0	48.5	33.3	60.6	60.6	33.3	42.4	84.8	27.3	33.3	30.3

ANNEX 1.7 Availability of Laboratory Services in ART Sites

Electorate	Facilities in NCD that provide ART	HIV antibody test	CD4 cell count	Point of Care CD4 (PIMA)	Haemoglobin	Full blood count	Blood glucose level	RPR or VDRL test for syphilis	Liver function test	Renal function test	HIV viral load test	PCR for early infant diagnosis test	Rapid Syphilis test	TB microscopy	Xpert TB/MDR test	Total # of lab equipment available	% out of 14 laboratory equipment
POM North East	6 Mile Clinic	•	•		•	•	•	•	•	•			•	•	•	11	78.6
	9 Mile Clinic	•	•	•	•	•	•	•	•	•			•		•	11	78.6
	Gordons Clinic				•	•	•						•			4	28.6
	Heduru Clinic	•	•	•	•	•	•	•	•	•	•					10	71.4
	PPTCT - PMGH	•	•	•	•	•	•	•	•	•			•	•		11	78.6
	Well Baby Clinic - PMGH	•	•		•	•	•	•	•	•						8	57.1
	St. Joseph Freinademetz	•	•	•	•	•	•	•	•	•			•			10	71.4
POM North West	Begabari Clinic	•	•	•	•	•	•	•	•	•	•					10	71.4
	St. Pauls Clinic		•	•	•	•	•	•	•	•			•			9	64.3
	St. Thressia Clinic	•	•	•	•											4	28.6
POM South	House of Hope, Ela Beach	•	•		•	•		•	•	•			•			8	57.1
	Kilakila Clinic	•	•	•		•			•	•						6	42.9
	Koki Salvation Army	•	•	•				•					•			5	35.7
	Lawes Road Clinic	•	•	•	•	•	•	•	•	•			•	•	•	12	85.7
# of ART sites providing lab tests		12	13	10	12	12	10	11	11	11	2	0	9	3	3		
% of ART sites providing lab tests		85.7	92.9	71.4	85.7	85.7	71.4	78.6	78.6	78.6	14.3	0.0	64.3	21.4	21.4		

ANNEX 1.8 Availability of Laboratory Services in TB sites

Electorate	Electorate	HIV antibody test	Haemoglobin	Full blood count	Blood glucose level	Liver function test	Renal function test	TB microscopy	Xpert TB/MDR test	Chest Xray	Tuberculin skin test (Mantoux)	Total # of lab tests done on or off site	% out of 10 laboratory tests done on or off site
Port Moresby North East	6 Mile Clinic	•	•	•	•	•	•	•	•			8	50.0
	9 Mile Clinic	•	•	•	•	•	•		•			7	43.8
	CIS Bomana	•										1	6.3
	Gordons Clinic		•	•	•							3	18.8
	PAU Clinic				•							1	6.3
	Well Baby Clinic - PMGH	•	•	•	•	•	•			•		7	43.8
POM North West	Gerehu Hospital	•			•			•	•			4	25.0
	Murray Barracks				•					•		2	12.5
	St. Thressia Clinic	•	•					•				3	18.8
	Tokarara Clinic	•	•	•	•		•	•				6	37.5
	UPNG Clinic - Waigani	•						•				2	12.5
Port Moresby South	Badili Clinic	•							•			2	12.5
	Kaugere Clinic	•	•		•							3	18.8
	Kilakila Clinic	•		•		•	•					4	25.0
	Lawes Road Clinic	•	•	•	•	•	•	•	•			8	50.0
	Taurama Barracks	•	•									2	12.5
# of facilities providing lab tests*		13	9	7	10	5	6	6	5	2	0		
% of facilities providing lab tests*		81.3	56.3	43.8	62.5	31.3	37.5	37.5	31.3	12.5	0.0		

* Laboratory tests provided on and off site

ANNEX 1.9 Availability of Essential Medicines for HIV Care and Treatment in ART Sites

Electorate	Facilities in NCD that provide ART	Determine strips for HIV test	Stat Pak Strips for HIV test	First line ART regimen for adults in stock	First line ART regimen for Children 3-10 yrs in stock	First line ART regimen for Children < 3 yrs in stock	Cotrimoxazole prophylaxis for OI for adults	Isoniazid for INH Preventive Therapy (IPT)	Cotrimoxazole prophylaxis for OI for children	Total # of commodities available	% of commodities available
POM North East	6 Mile Clinic	•	•	•			•	•		5	62.5
	9 Mile Clinic	•	•	•			•	•	•	6	75.0
	Gordons Clinic	•	•	•	•		•	•		6	75.0
	Heduru Clinic	•	•	•			•	•		5	62.5
	PPTCT - PMGH	•	•	•	•		•	•		6	75.0
	Well Baby Clinic - PMGH	•	•	•	•	•	•		•	7	87.5
	St. Joseph Freinademetz	•	•	•	•			•		5	62.5
POM North West	Begabari Clinic			•			•	•		3	37.5
	St. Pauls Clinic	•	•	•			•		•	5	62.5
	St. Thressia Clinic	•	•	•			•	•		5	62.5
POM South	House of Hope, Ela Beach	•	•	•	•		•	•	•	7	87.5
	Kilakila Clinic	•	•	•			•	•	•	6	75.0
	Koki Salvation Army	•	•	•			•	•		5	62.5
	Lawes Road Clinic	•	•	•			•	•		5	62.5
# of ART sites providing lab tests		13	13	14	5	1	13	12	5		
% of ART sites providing lab tests		92.9	92.9	100.0	35.7	7.1	92.9	85.7	35.7		

ANNEX 1.10 Availability of Essential Medicines for TB Treatment

Electorate	Facilities in NCD that provide TB Treatment	Category 1 TB treatment for adults in stock	Category 2 TB treatment for adults in stock	Category 1 TB treatment for children in stock	Category 2 TB treatment for children in stock
POM North East	6 Mile Clinic	•	•		
	9 Mile Clinic	•	•	•	•
	CIS Bomana	•			
	Gordons Clinic	•	•	•	•
	PAU Clinic				
	Well Baby Clinic - PMGH				
POM North West	Gerehu Hospital	•	•	•	•
	Murray Barracks	•	•	•	•
	St. Thressia Clinic	•	•	•	•
	Tokarara Clinic	•	•	•	•
	UPNG Clinic - Waigani	•	•		
POM South	Badili Clinic	•	•	•	•
	Kaugere Clinic				
	Kilakila Clinic	•	•	•	•
	Lawes Road Clinic	•	•	•	•
	Taurama Barracks	•	•	•	•
# of TB treatment facilities with commodities in stock		13	12	10	10
% of TB treatment facilities with commodities in stock		81.3	75.0	62.5	62.5

ANNEX 2**Survey Questionnaire****HEALTH FACILITY QUESTIONNAIRE***Introduction*

My name is

I am part of the team conducting HIV service availability mapping in National Capital District. This mapping is commissioned by NCD health services to provide up-to-date information on the distribution and gaps in HIV, sexually transmitted infections (STIs), tuberculosis (TB), and gender-based violence (GBV) services. The report from this exercise will be used by managers and stakeholders to improve the quality of service delivery in NCD.

I will interview you using this questionnaire and report the results back to NCD.

For further questions regarding this service availability mapping, please contact the director of public health at NCDHS, Dr. Niko Wuatai.

General information about the facility

001	Date of data collection (dd/mm/yyyy):	___/___/___
002	Electorate name:	
003	Health facility name:	
004	Ownership*: (Please tick (✓) one option below)	
	<input type="checkbox"/> Government (public) facility	
	<input type="checkbox"/> NGO- or faith-based organization (FBO)-owned facility (private, not for profit)	
	<input type="checkbox"/> Private, for-profit facility	
005	Facility type: (Please tick (✓) one option below)	
	<input type="checkbox"/> National referral hospital	
	<input type="checkbox"/> District hospital	
	<input type="checkbox"/> Health center	
	<input type="checkbox"/> Urban clinic	
	<input type="checkbox"/> Sub-health center	
	<input type="checkbox"/> Community aid post	

Facility questionnaire

006	Interviewer's name (last, first):	
007	Main respondent's name (last, first):	
008	Main respondent's job title:	
009	Facility telephone and fax numbers (including local telephone codes), and email address:	Telephone: Fax: Email:
010	Facility geographic coordinates*: *Specify North (N) or South (S) for latitude and East (E) or West (W) for longitude. Indicate if these are negative (-) accordingly.	Latitude (N/S): Longitude (E/W):

QUESTIONNAIRE OVERVIEW:

Section 1: General characteristics

Section 2: General purpose equipment

Section 3: Human resources

Section 4: Trained staff

Section 5: Drugs and commodities

Section 6: Laboratory tests

Section 7: Information on interventions available in the facility

Section 8: Data management tools

FACILITY QUESTIONNAIRE

Section 1. General Characteristics. This section of the questionnaire focuses on basic characteristics of the facility including the number of outpatients, inpatients, and maternity beds available. It also asks about the availability of specific resources such as water, sanitation facilities, and communication systems.

Note to interviewers: Please indicate respondent's answers in the rightmost column. Previous month means the **last completed** calendar month.

Read to the respondent: We are interested in knowing how many clients/patients were seen and beds available in this facility in the previous calendar month.

No.	Question	Answer
101	How many outpatients were seen in this facility during the previous month (from all outpatient clinics for adults, children, and maternal and child health (MCH) clinics)?	
102	Does this facility have inpatient beds (excluding baby cots and maternity beds)? By inpatient beds we mean physical beds with mattresses in good condition that can be used by patients for overnight stays in the facility.	<input type="checkbox"/> 1. Yes (If yes, enter the number of beds: <input type="text"/>) <input type="checkbox"/> 2. No
103	Does this facility have labor and delivery services? If yes, how many beds are available for delivery?	<input type="checkbox"/> 1. Yes (If yes, enter the number of beds: <input type="text"/>) <input type="checkbox"/> 2. No
104	How many women delivered in this health facility in the previous month?	<input type="checkbox"/> Enter "O" if none.
105	How many inpatients were admitted in this facility during the previous month?	<input type="checkbox"/> Enter "O" if none.
The following questions are about general resources available in the facility.		
106	What is the main source of water in this facility? Tick (✓) one option.	<input type="checkbox"/> 1. Piped water <input type="checkbox"/> 2. Water from open well <input type="checkbox"/> 3. Water from covered well or borehole <input type="checkbox"/> 4. Surface water <input type="checkbox"/> 5. Rain water <input type="checkbox"/> 6. Tanker/truck
107	Does this facility have accessible clean toilets or pit latrine?	<input type="checkbox"/> Yes <input type="checkbox"/> No <input type="checkbox"/> Partial (If partial, specify where sanitation facilities do not meet the standards)
108	Does this facility have a reliable source of electricity?	<input type="checkbox"/> Yes <input type="checkbox"/> No <input type="checkbox"/> Partial (If partial, specify the problem)
109	Who pays for the electricity bills at the health facility?	
110	Does the facility have a functioning landline telephone?	<input type="checkbox"/> Yes <input type="checkbox"/> No Telephone #:
111	Does the facility have functioning cellular telephone (either private or supported by the facility)? Circle if private or supported by health facility.	
112	Does the facility have a functioning computer for staff use?	<input type="checkbox"/> Yes <input type="checkbox"/> No (If no, skip to 114)
113	Does this facility have functioning Internet services for staff use?	<input type="checkbox"/> Yes <input type="checkbox"/> No

Read to the respondent: We would now like to ask you about guidelines available in this facility. Are national guidelines for the following services available, and accessible here?

No.	Question	Answer
114	HIV care and treatment including management of opportunistic infections among people living with HIV	<input type="checkbox"/> Yes <input type="checkbox"/> No
115	HIV antibody testing and counseling	<input type="checkbox"/> Yes <input type="checkbox"/> No
116	STI diagnosis and treatment	<input type="checkbox"/> Yes <input type="checkbox"/> No
117	Family planning policy and manual	<input type="checkbox"/> Yes <input type="checkbox"/> No
118	National tuberculosis management protocol	<input type="checkbox"/> Yes <input type="checkbox"/> No
119	Guidelines for management of sexual- and gender-based (SGBV) violence	<input type="checkbox"/> Yes <input type="checkbox"/> No

Section 2: General Purpose Equipment

Note to interviewers: We are interested in knowing if the following health-specific resources are available in this facility. These are all yes/no questions. If it is a large health facility, assess only the center providing HIV services. Please indicate whether the following are **available and functional** in this facility today.

Read to the respondent: In this section, we would like to know if the health facility has the following equipment.

No.	Equipment	Answer
201	Blood pressure machine and cuff	<input type="checkbox"/> Yes <input type="checkbox"/> No
202	Stethoscope(s)	<input type="checkbox"/> Yes <input type="checkbox"/> No
203	Adult weighing scale	<input type="checkbox"/> Yes <input type="checkbox"/> No
204	Thermometer(s)	<input type="checkbox"/> Yes <input type="checkbox"/> No
205	Latex gloves	<input type="checkbox"/> Yes <input type="checkbox"/> No
206	Refrigerator	<input type="checkbox"/> Yes <input type="checkbox"/> No
207	Vaginal speculum	<input type="checkbox"/> Yes <input type="checkbox"/> No
208	Proctoscope	<input type="checkbox"/> Yes <input type="checkbox"/> No
209	Examination bed with lithotomy poles	<input type="checkbox"/> Yes <input type="checkbox"/> No
210	Light source/torch for vaginal examination	<input type="checkbox"/> Yes <input type="checkbox"/> No
211	Kidney dish/bowel and sponge-holding forceps	<input type="checkbox"/> Yes <input type="checkbox"/> No
212	Sterilizing equipment	<input type="checkbox"/> Yes <input type="checkbox"/> No
213	Microscope	<input type="checkbox"/> Yes <input type="checkbox"/> No
214	Centrifuge	<input type="checkbox"/> Yes <input type="checkbox"/> No
215	Rotator	<input type="checkbox"/> Yes <input type="checkbox"/> No
216	Slides	<input type="checkbox"/> Yes <input type="checkbox"/> No
217	Examination bed (in the consultation room)	<input type="checkbox"/> Yes <input type="checkbox"/> No
Additional questions for clinics that manage pediatric patients		
218	Blood pressure machine with pediatric cuff	<input type="checkbox"/> Yes <input type="checkbox"/> No
219	Pediatric weighing scale	<input type="checkbox"/> Yes <input type="checkbox"/> No

Read to the respondent: We would now like to ask you about guidelines available in this facility. Are national guidelines for the following services available, and accessible here?

No.	Question	Answer
114	HIV care and treatment including management of opportunistic infections among people living with HIV	<input type="checkbox"/> Yes <input type="checkbox"/> No
115	HIV antibody testing and counseling	<input type="checkbox"/> Yes <input type="checkbox"/> No
116	STI diagnosis and treatment	<input type="checkbox"/> Yes <input type="checkbox"/> No
117	Family planning policy and manual	<input type="checkbox"/> Yes <input type="checkbox"/> No
118	National tuberculosis management protocol	<input type="checkbox"/> Yes <input type="checkbox"/> No
119	Guidelines for management of sexual- and gender-based (SGBV) violence	<input type="checkbox"/> Yes <input type="checkbox"/> No

Section 3. Human Resources

This section of the questionnaire asks about human resources available in this facility.

Note to interviewers: Questions ask about whether human resources are available and the number present on the day of the interview. Please indicate respondent's answer in the rightmost column. ENTER "0" if **none**.

Read to the respondent: In this section, we would like to know how many of the following health personnel work in this facility. We would also like to know the number for each human resource group that is present at the facility today.

No.	Equipment	Answer	Source of salary
301	Specialist doctors (including pediatricians, surgeons, obstetricians, public health specialists)		
	(a) How many specialist doctors work full-time at this facility?		
	(b) How many specialist doctors work part-time at this facility?		
	(c) How many specialist doctors are present at this facility today?		
302	Medical officers:		
	(a) How many medical officers work full-time at this facility?		
	(b) How many medical officers work part-time at this facility?		
	(c) How many medical officers are present at this facility today?		
303	Laboratory technicians/technologists:		
	(a) How many laboratory technicians/technologists work at this facility?		
	(b) How many laboratory technicians/technologists are present at this facility today?		
304	Pharmacists and dispensers:		
	(a) How many pharmacists and dispensers work at this facility?		
	(b) How many pharmacists and dispensers are present at this facility today?		
305	Health management information system (HMIS) personnel/ records officers/M&E officers:		
	(a) How many HMIS personnel/records officers/M&E personnel work at this facility?		
	(b) How many HMIS personnel/records officers/M&E personnel are present at this facility today?		

No.	Equipment	Answer	Source of salary
306	Full-time or dedicated health service managers:		
	(a) How many full-time or dedicated health service managers work at this facility?		
	(b) How many full-time or dedicated health service managers are present at this facility today?		
307	Social workers:		
	(a) How many social workers work at this facility?		
	(b) How many social workers are present at this facility today?		
308	Health extension officers:		
	(a) How many health extension officers (HEOs) work at this facility?		
	(b) How many health extension officers are present at this health facility today?		
309	Certified/registered nurses , midwives including double trained nurse-midwives:		
	(a) How many nurses and midwives work at this facility?		
	(b) How many nurses and midwives are present at this facility today?		
310	Dental officers:		
	(a) How many dental officers work at this facility?		
	(b) How many dental officers are available at the health facility today?		
311	Community health workers:		
	(a) How many community health workers (CHWs) work at this facility?		
	(b) How many community health workers are present at this facility today?		
312	Hygiene staff:		
	(a) How many hygiene staff members work at this facility?		
	(b) How many hygiene staff members are present at this facility today?		
313	Revenue clerks:		
	(a) How many revenue clerks work at this facility?		
	(b) How many revenue clerks are present at this facility today?		
314	Lay counselors (paid/salaried nonmedical staff providing HIV counseling and testing, tracking patients, etc.):		
	(a) How many lay counselors work at this facility?		
	(b) How many lay counselors are present at this facility today?		
315	Volunteers (unpaid staff):		
	(a) How many volunteers work at this facility?		
	(b) How many volunteers are present at this facility today?		

Section 4: Trained Staff

This section of the questionnaire asks about the number of staff in this facility who have received training in fields relevant to HIV and AIDS, TB, STI, and managing sexual- and gender-based violence (SGBV).

Note to interviewers: Please indicate respondent's answers in the rightmost column.

To Respondent: In this section, we would like to know how many of your staff have received training on the delivery of specific health interventions.

For each intervention, please indicate the number of staff who have received in-service training **during the last three (3) years**.

No.	Question	Answer
HIV Testing and Counseling Services		
401	Number of health workers trained in HIV counseling only .	
402	Number of health workers trained in HIV counseling and testing (PICT or VCT)	
403	Number of health workers trained in HIV antibody testing using Determine. (Question 403 and 404 excludes all staff included in 401 and 402.)	
404	Number of health workers trained in HIV antibody testing using both Determine and StatPak	
Prevention of Parent-to-Child Transmission of HIV		
405	The health facility provides antenatal care and delivery services).	<input type="checkbox"/> Yes <input type="checkbox"/> No (If "No" please skip to 408)
406	Number of health workers managing the antenatal clinic who are trained in HIV testing and counseling.	
407	Number of health workers managing the antenatal clinic who are trained in IMAI.	
408	The health facility has a labor ward.	
409	Number of health workers in labor ward trained on HIV testing and counseling.	
410	Number of health workers in the labor ward trained in PPTCT.	<input type="checkbox"/> Yes <input type="checkbox"/> No (If "No" please skip to 411)
Treatment of HIV and Management of Opportunistic Infections		
411	Number of health workers trained in IMAI (excludes staff included in question 407 count).	
412	Number of health workers trained on management of TB.	
413	Number of health workers trained on STI diagnosis and treatment.	
414	Number of health workers trained on management of gender-based violence.	
415	Number of health workers trained in family planning and can administer oral contraceptives and injectable contraceptives.	
416	Number of health workers trained in family planning who can administer surgical/long-term or permanent contraceptive methods, e.g., implant, vasectomy, and tubal ligation.	
417	Number of health workers trained in infection control/ universal precautions for handling blood and other body fluids.	
418	Number of health workers trained on drug and supplies management in the past three years.	
419	Number of health workers trained on the health management information system (HMIS) related to HIV.	
420	Number of nonmedical workers including trackers or peer educators trained on HIV counseling and testing, or other trainings.	Specify the training

Section 5. Drugs and Commodities

This section of the questionnaire asks about the availability of specific drugs and commodities in the facility. These are all yes/no questions.

Note to interviewers: Please indicate respondent's answers in the rightmost column. If the clinic does not have the drug formulation indicated in the questionnaire but is using another formulation, please indicate the formulation that is available.

Read to the respondent: In this section, we would like to know if the following drugs or commodities are available **today** in this facility. These are all yes/no questions. For a "yes" reply, drugs must be present in the form and dosage indicated.

No.	Question	Answer
501	DetermineR HIV test	<input type="checkbox"/> Yes <input type="checkbox"/> No
502	StatPakR HIV test	<input type="checkbox"/> Yes <input type="checkbox"/> No
503	TDF/3TC/EFV tables or another first line ART regimen for adults	<input type="checkbox"/> Yes <input type="checkbox"/> No
504	AZT/3TC/NVP or another first line ART regimen for children aged 3-10 years	<input type="checkbox"/> Yes <input type="checkbox"/> No
505	ABC/3TC/LPV/r or another first line ART regimen for children less than 3 years old	<input type="checkbox"/> Yes <input type="checkbox"/> No
506	Nevirapine suspension	<input type="checkbox"/> Yes <input type="checkbox"/> No
507	Zidovudine/AZT suspension	<input type="checkbox"/> Yes <input type="checkbox"/> No
508	Co-trimoxazole suspension for pediatrics (80+40mg/ml)	<input type="checkbox"/> Yes <input type="checkbox"/> No
509	Co-trimoxazole tablets for pediatrics (160+80mg/tab)	<input type="checkbox"/> Yes <input type="checkbox"/> No
510	Co-trimoxazole tablets for adults (400+80mg/tab)	<input type="checkbox"/> Yes <input type="checkbox"/> No
511	Co-trimoxazole tablets for adults (800+160mg/tab)	<input type="checkbox"/> Yes <input type="checkbox"/> No
512	Ciprofloxacin capsules or tablets (500 mg)	<input type="checkbox"/> Yes <input type="checkbox"/> No
513	Amoxicillin capsules or tablets (500 mg)	<input type="checkbox"/> Yes <input type="checkbox"/> No
514	Augumentin (500mg +125 mg)	<input type="checkbox"/> Yes <input type="checkbox"/> No
515	Azithromycin tablets (500mg tablets)	<input type="checkbox"/> Yes <input type="checkbox"/> No
516	Benzathine Penicillin (2.4 million unit vials)	<input type="checkbox"/> Yes <input type="checkbox"/> No
517	Doxycycline (100 mg tablets)	<input type="checkbox"/> Yes <input type="checkbox"/> No
518	Tinidazole (500 mg tablets)	<input type="checkbox"/> Yes <input type="checkbox"/> No
519	Nystatin vaginal pessaries	<input type="checkbox"/> Yes <input type="checkbox"/> No
520	Clotrimazole cream pessaries	<input type="checkbox"/> Yes <input type="checkbox"/> No
521	Probenecid (500 mg)	<input type="checkbox"/> Yes <input type="checkbox"/> No
522	Chloramphenicol capsules (500 mg)	<input type="checkbox"/> Yes <input type="checkbox"/> No
523	Erythromycin tablets (500 mg)	<input type="checkbox"/> Yes <input type="checkbox"/> No
524	Fluconazole capsules or tablets (150 mg)	<input type="checkbox"/> Yes <input type="checkbox"/> No
525	Paracetamol suspension for pediatric pain relief (125 mg/ml)	<input type="checkbox"/> Yes <input type="checkbox"/> No
526	Vitamin A capsules 200,000 IU	<input type="checkbox"/> Yes <input type="checkbox"/> No
527	Isoniazid tablets for TB treatment (100-300 mg)	<input type="checkbox"/> Yes <input type="checkbox"/> No
528	Rifampicin+Isoniazid+Pyrazinamide tablets (60mg/30mg/150mg)	<input type="checkbox"/> Yes <input type="checkbox"/> No
529	Ethambutol tablets (100 mg)	<input type="checkbox"/> Yes <input type="checkbox"/> No
530	Streptomycin injection (lg)	<input type="checkbox"/> Yes <input type="checkbox"/> No
531	Rifampicin+Isoniazid+Pyrazinamide+Ethambutol tablets (150mg/75mg/400mg/275mg)	<input type="checkbox"/> Yes <input type="checkbox"/> No

No.	Question	Answer
532	Rifampicin+Isoniazid tablets (150mg/75mg)	<input type="checkbox"/> Yes <input type="checkbox"/> No
533	Rifampicin+Isoniazid tablets (60mg/60mg)	<input type="checkbox"/> Yes <input type="checkbox"/> No
534	Rifampicin+Isoniazid+Ethambutol tablets (150mg/75mg)	<input type="checkbox"/> Yes <input type="checkbox"/> No
535	Combined oral contraceptive pills	<input type="checkbox"/> Yes <input type="checkbox"/> No
536	Progestogen only pills (POP)	<input type="checkbox"/> Yes <input type="checkbox"/> No
537	Emergency contraceptives	<input type="checkbox"/> Yes <input type="checkbox"/> No
538	Injectable contraceptives*	<input type="checkbox"/> Yes <input type="checkbox"/> No
	*Write the name of the injectable contraceptive available in health care facility.	
539	Male condoms	<input type="checkbox"/> Yes <input type="checkbox"/> No
540	Lubricants for condoms	<input type="checkbox"/> Yes <input type="checkbox"/> No
541	Female condoms	<input type="checkbox"/> Yes <input type="checkbox"/> No
542	Brochures, posters, or other materials on safe sex practices.	<input type="checkbox"/> Yes <input type="checkbox"/> No
	Put a tick mark by the information, education, communication (IEC) materials displayed in the health facility:	
	<input type="checkbox"/> HIV	
	<input type="checkbox"/> TB	
	<input type="checkbox"/> STI	
	<input type="checkbox"/> SGBV	

Section 6. Laboratory Tests.

This section of the questionnaire asks about the availability of specific laboratory tests in the facility. We are interested in knowing what the normal procedure is for laboratory tests.

Note to interviewers: Please indicate respondent's answer in the rightmost column by ticking one option.

Read to the respondent: In this section of the questionnaire, we would like to know if the following laboratory tests can be carried out in this facility. For each test, please indicate whether this test can be done and results received on site **today**, or if the test can be done off site and results received within one week (that is, a sample is sent to a lab for analysis and results are returned to the facility), or if the service is not available (that is, you cannot take a sample, nor refer the sample/patient to another facility and receive the results in good timing).

If the health facility sends samples for testing but the turnaround time is longer than stated in the question, indicate the average turnaround time for receiving results, as additional comments.

No.	Question	Respondent's answer
601	HIV antibody test	<input type="checkbox"/> 1. The test can be done on site today and the health facility can confirm positive antibody test <input type="checkbox"/> 2. The test can be done on site today but there is no second rapid test to confirm positive results <input type="checkbox"/> 3. Service is not available
602	CD4 cell count	<input type="checkbox"/> 1. The test can be done on site today <input type="checkbox"/> 2. The test can be done off site and results received within one week <input type="checkbox"/> 3. Service is not available If the test can be done on site, do you have PIMA machine or other point of care CD4 lab test

No.	Question	Respondent's answer
603	Hemoglobin	<input type="checkbox"/> 1. The test can be done on site today <input type="checkbox"/> 2. The test can be done off site and results received within two days <input type="checkbox"/> 3. Service is not available
604	Full blood count	<input type="checkbox"/> 1. The test can be done on site today <input type="checkbox"/> 2. The test can be done off site and results received within two days <input type="checkbox"/> 3. Service is not available
605	Blood glucose level	<input type="checkbox"/> 1. The test can be done on site today <input type="checkbox"/> 2. The test can be done off site and results received within two days <input type="checkbox"/> 3. Service is not available
606	RPR or VDRL test for syphilis	<input type="checkbox"/> 1. The test can be done on site today <input type="checkbox"/> 2. The test can be done off site and results received within two days <input type="checkbox"/> 3. Service is not available
607	Liver function test	<input type="checkbox"/> 1. The test can be done on site today <input type="checkbox"/> 2. The test can be done off site and results received within two days <input type="checkbox"/> 3. Service is not available
608	Renal function test	<input type="checkbox"/> 1. The test can be done on site today <input type="checkbox"/> 2. The test can be done off site and results received within two days <input type="checkbox"/> 3. Service is not available
609	HIV viral load test	<input type="checkbox"/> 1. The test can be done on site today <input type="checkbox"/> 2. The test can be done off site and results received within one week <input type="checkbox"/> 3. Service is not available
610	PCR for early in-fant diagnosis test (EID)	<input type="checkbox"/> 1. The test can be done on site today <input type="checkbox"/> 2. The test can be done off site and results received within one week <input type="checkbox"/> 3. Service is not available
611	Rapid syphilis test	<input type="checkbox"/> 1. The test can be done on site today <input type="checkbox"/> 2. The test can be done off site and results received within two days <input type="checkbox"/> 3. Service is not available
612	TPHA test for syphilis	<input type="checkbox"/> 1. The test can be done on site today <input type="checkbox"/> 2. The test can be done off site and results received within two days <input type="checkbox"/> 3. Service is not available
613	TB microscopy	<input type="checkbox"/> 1. The test can be done on site today <input type="checkbox"/> 2. The test can be done off site and results received within two days <input type="checkbox"/> 3. Service is not available
614	Xpert TB/MDR test	<input type="checkbox"/> 1. The test can be done on site today <input type="checkbox"/> 2. The test can be done off site and results received within two days <input type="checkbox"/> 3. Service is not available
615	Chest X-ray	<input type="checkbox"/> 1. The test can be done on site today <input type="checkbox"/> 2. The test can be done off site and results received within two days <input type="checkbox"/> 3. Service is not available
616	Tuberculin skin test (Mantoux)	<input type="checkbox"/> 1. The test can be done on site today <input type="checkbox"/> 2. The test can be done off site and results received within two days <input type="checkbox"/> 3. Service is not available

Additional comments

Section 7. Information on Interventions Available in the Facility.

This section of the questionnaire asks for information about some of the health interventions that may be offered in this facility.

To record the interviewee's response, tick the appropriate option or write the answer in the space provided.

Read to the respondent: We are interested in knowing more information about health interventions that may be offered in this facility. By **previous month** we mean the last **completed** calendar month

No.	Question	Response
701	Was HIV antibody testing and counseling available in this facility in the previous month?	<input type="checkbox"/> The facility provided HIV antibody testing and counseling <input type="checkbox"/> The facility provided counseling only <input type="checkbox"/> The facility did not provide counseling nor testing (If no, SKIP TO 703)
702	How many clients received HIV anti-body testing in the previous month? (exclude pregnant and breast-feeding mothers)?	
703	Were antenatal services provided in this facility?	<input type="checkbox"/> Yes <input type="checkbox"/> No (If no, SKIP TO 709)
704	How many antenatal clients were seen in the previous month?	
705	Was HIV counseling provided to pregnant women?	<input type="checkbox"/> Yes <input type="checkbox"/> No
706	Was HIV testing provided to pregnant women?	<input type="checkbox"/> Yes <input type="checkbox"/> No
707	How many pregnant and breast-feeding women were tested in the previous month?	
708	Was antiretroviral therapy (ART) provided to prevent mother-to-child transmission of HIV?	<input type="checkbox"/> Yes <input type="checkbox"/> No (If no, SKIP TO 711)
709	How many pregnant or breast-feeding women received ART in the previous month?	
710	How many babies born to HIV-positive mothers received nevirapine or AZT suspension in the previous month?	
711	Is antiretroviral therapy (ART) offered at this facility to children or adults living with HIV?	<input type="checkbox"/> Yes <input type="checkbox"/> No (If no, SKIP TO 716)
712	How many patients are currently receiving ART in this health facility (by the end of the previous month)?	If "0" SKIP TO 716.
713	Of the total number of patients provided in 712, how many of them are children under 15 years of age?	
714	Of the total number of patients provided in 712, how many of them are women 15 years of age or older?	

No.	Question	Response
715	Of the total number of patients provided in 712, how many of them are men 15 years of age or older? CHECK: 713a through 715 should add up to the total number indicated in 712.	
716	Does this facility provide STI diagnosis and treatment?	<input type="checkbox"/> Yes <input type="checkbox"/> No (If no, SKIP TO 718)
717	How many patients were seen for STI diagnosis and treatment in the previous month?	
718	Does this facility receive any funding support from donors either DFAT, GFATM, PEPFAR, or another donor?	<input type="checkbox"/> Yes (If yes, name the donor) <input type="checkbox"/> No
719	Which of the following interventions does the donor support? Tick the correct option and name the donor.	HIV testing: Donor: Antiretroviral therapy: Donor: Gender-based violence reduction: Donor: Tuberculosis prevention and control: Donor: STI testing and management: Donor:
720	Does your facility have a working relationship with any NGO or CBO for HIV prevention and treatment activities? (for funding, technical assistance, or human resource support)	<input type="checkbox"/> Yes <input type="checkbox"/> No
721	Does your facility conduct any HIV prevention outreach in the community for key populations, either MSM, FSWs, transgender people, or other high-risk groups?	<input type="checkbox"/> Yes <input type="checkbox"/> No
722	Is a TB register of suspected TB cases kept at this facility?	<input type="checkbox"/> Yes <input type="checkbox"/> No
723	Was smear microscopy available in this facility for TB diagnosis in the previous month?	<input type="checkbox"/> Yes <input type="checkbox"/> No
724	Was TB treatment available in this facility in the previous month?	<input type="checkbox"/> Yes <input type="checkbox"/> No
725	Is direct observation of short-course chemotherapy for TB provided in this facility or in the surrounding community?	<input type="checkbox"/> Yes <input type="checkbox"/> No
726	Was HIV antibody testing available in this facility for all TB patients (suspected or confirmed) in the previous month?	<input type="checkbox"/> 1. The facility provides HIV antibody testing for all TB patients <input type="checkbox"/> 2. The facility provides a referral to HIV testing services <input type="checkbox"/> 3. The facility does not test TB patients
727	In the previous month, were there any HIV or STI services provided in this facility tailored* specifically to key populations for example men who have sex with men, female sex workers, or transgender people? <i>*Note: By "tailored" we mean a service provided by a health provider who received additional training to work with key populations; and/or an area designated specifically to manage key populations.</i>	<input type="checkbox"/> Yes <input type="checkbox"/> No

No.	Question	Response
728	Does this health facility provide services for management of gender-based violence, i.e., screening and treatment/referral of survivors?	<input type="checkbox"/> Yes <input type="checkbox"/> No
729	Does this health facility provide post- exposure prophylaxis (PEP) for managing potential HIV exposure?	<input type="checkbox"/> Yes <input type="checkbox"/> No
730	Does this health facility provide emergency contraceptives?	<input type="checkbox"/> Yes <input type="checkbox"/> No
731	Does this health facility provide oral contraceptives, either POP or combined oral contraceptives?	<input type="checkbox"/> Yes <input type="checkbox"/> No
732	Does this health facility provide injectable contraceptives?	<input type="checkbox"/> Yes <input type="checkbox"/> No
733	Does this facility provide permanent contraceptive options such as tubal ligation and vasectomies?	<input type="checkbox"/> Yes <input type="checkbox"/> No
734	Does your facility have a working relationship with any NGO or CBO for TB contact tracing and treatment activities?	<input type="checkbox"/> Yes <input type="checkbox"/> No

Section 8: Data Management Tools

This section of the questionnaire seeks to find out if the updated national HIV registers and report forms are available.

Observe and tick the appropriate option in the rightmost column.

Read to the respondent: Please show us the registers and report forms the health facility is using for recording and reporting information on HIV services provided to clients. We are interested to know if the health facility has the updated HIV registers.

No.	Question (<i>Observe if the following registers and report forms are available at the point of service delivery.</i>)	Response
801	HIV counseling and testing log book	<input type="checkbox"/> Yes <input type="checkbox"/> No
802	Antenatal care register	<input type="checkbox"/> Yes <input type="checkbox"/> No
803	Obstetric care register	<input type="checkbox"/> Yes <input type="checkbox"/> No
804	HIV care and treatment logbook	<input type="checkbox"/> Yes <input type="checkbox"/> No
805	ART register	<input type="checkbox"/> Yes <input type="checkbox"/> No
806	Exposed infant DBS logbook	<input type="checkbox"/> Yes <input type="checkbox"/> No
807	Exposed infant register	<input type="checkbox"/> Yes <input type="checkbox"/> No
808	Post-exposure prophylaxis (PEP) monitoring form	<input type="checkbox"/> Yes <input type="checkbox"/> No
809	SURV 1 tally	<input type="checkbox"/> Yes <input type="checkbox"/> No
810	SURV 2 Tally	<input type="checkbox"/> Yes <input type="checkbox"/> No
811	SURV 1 report form	<input type="checkbox"/> Yes <input type="checkbox"/> No
812	SURV 2 report form	<input type="checkbox"/> Yes <input type="checkbox"/> No
813	SURV 4 report form	<input type="checkbox"/> Yes <input type="checkbox"/> No
Reporting		
814	Is the health facility submitting SURV 1 to NCDHS?	<input type="checkbox"/> Yes <input type="checkbox"/> No
815	Is the health facility submitting SURV 2 to NCDHS?	<input type="checkbox"/> Yes <input type="checkbox"/> No
815	The SURV 1 report of the previous month was delivered to NCDHS before the 14th day of the new month.	<input type="checkbox"/> Yes <input type="checkbox"/> No
816	Does the health facility report data on key populations receiving services?	<input type="checkbox"/> Yes <input type="checkbox"/> No

This is the end of the questionnaire. Thank you very much for responding to the questionnaire.

APRIL-MAY 2017

Service Availability Mapping for HIV, Sexually Transmitted Infections, Gender-Based Violence, and Tuberculosis

National Capital District – Papua New Guinea



DEPARTMENT OF HEALTH



USAID
FROM THE AMERICAN PEOPLE

fhi360
THE SCIENCE OF IMPROVING LIVES