



# Global Education

For over 60 years, FHI 360's Global Education experts have worked to ensure that all children and youth have equitable access to a quality education that equips them to become productive and empowered citizens.

We focus on achieving measurable and relevant learning outcomes by collaborating with governments, civil society, the private sector, and communities to build resilience and sustain improvements in national education systems.

We are working with over

**53,000**

schools and **68,000** teachers

Nearly

**6 Million**

children and youth benefit from our projects

Our experts have experience in more than

**95 Countries**



# Technical Areas of Expertise

## Learning Throughout the Education Cycle

FHI 360’s programs focus on **improving education** at the classroom, school, community and system levels, ensuring that children and youth receive comprehensive support across the learning continuum. Our evidence-based approaches **produce measurable improvements in learning outcomes** through early grade reading initiatives, accelerated learning programs, teacher professional development, curricula and teaching and learning materials development, a positive youth development approach, safe and inclusive learning environments, and committed partners from the public and private sectors.

## Social-Emotional Learning (SEL)

The best learning happens in the context of **supportive relationships**, where learning is safe, challenging, engaging, and meaningful. Incorporating SEL in our programs for teachers and students helps them acquire and use the **knowledge, attitudes, and skills** necessary to understand and manage emotions, set and achieve positive goals, feel and show empathy for others, establish and maintain positive relationships, and make responsible decisions.

## Teacher Professional Development

Changes in teaching practice drive improvements in learning outcomes. We **build the capacity of educators** in content knowledge, pedagogical skills, school management and governance, learning assessments, curriculum development, and social emotional learning **through coaching**, mentoring, blended IT-based and face-to-face modeling, and teacher learning circles that complement the techniques taught during in-service training workshops.

## Education in Emergencies

Through our work in conflict affected, post-conflict and fragile environments, we **prioritize local institutional capacity building and systems strengthening** to ensure learner and teacher well-being with an emphasis on psychosocial support, safe learning environments, and equitable access to quality formal, non-formal, and accelerated learning opportunities.

## Collaborating, Learning, and Adapting (CLA) Framework

FHI 360 incorporates CLA into our projects to ensure they are **grounded in a strong evidence base** and regularly adapted to remain relevant throughout implementation.

## Equity and Inclusion

All our education programs integrate equity and inclusion strategies that **facilitate safe access to education to children and youth**, especially the most vulnerable and marginalized, and students with disabilities. We aim to remove the barriers created by harmful gender and social norms to create the positive learning environment in which all learners can thrive.

## Systems Strengthening and Institutional Capacity Building

Our systems approach acknowledges the political, institutional and technical elements of education reform. We consistently work with a range of key education stakeholders such as ministries, communities, schools, teachers, and families to **create education systems that respond to the complex, dynamic and diverse needs of the people they serve**. Our programs prioritize country ownership and take a collaborative approach to help ministries build their institutional capacity for data-driven decision making.

## Social + Behavior Change (SBC)

Our SBC work integrates best practices from disciplines such as social psychology, human-centered design, anthropology, behavioral economics, social marketing, and other behavioral sciences. We design interactive, participatory strategies and solutions to ensure a holistic approach to understand and address people’s desires and barriers and facilitators to change.

# FHI 360’s Response

FHI 360 is working with national governments, civil society, communities and schools across the globe to address these challenges. Selected examples of our work are highlighted below.

## LIST OF CURRENT PROJECTS

### Africa

- FCDO Nigeria Partnership for Learning for All in Nigerian Education - PLANE
- MCC Cote d'Ivoire Education Sector Advisory and Consultant Services
- USAID Djibouti Early Grade Reading Activity
- USAID DRC *Elimu ni Jibu*
- USAID Ghana Partnership for Education: Learning Activity
- USAID Rwanda Tunoze Gusoma (Schools and Systems)
- USAID Senegal *Passerelles*
- USDA FFE Madagascar Mianatra
- USDA FFE Madagascar Mavitrika Mianatra

### Global

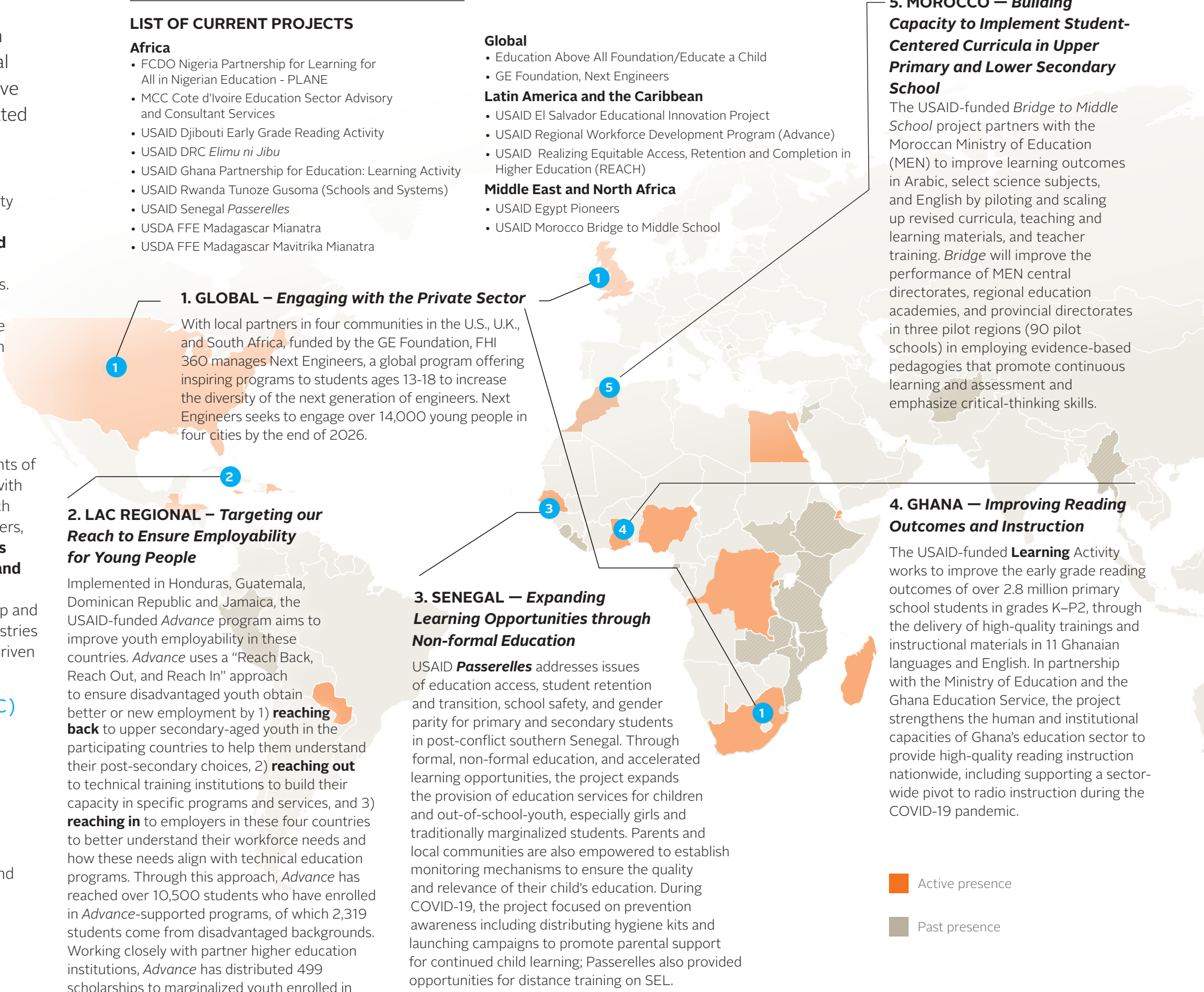
- Education Above All Foundation/Educate a Child
- GE Foundation, Next Engineers

### Latin America and the Caribbean

- USAID El Salvador Educational Innovation Project
- USAID Regional Workforce Development Program (Advance)
- USAID Realizing Equitable Access, Retention and Completion in Higher Education (REACH)

### Middle East and North Africa

- USAID Egypt Pioneers
- USAID Morocco Bridge to Middle School



Active presence

Past presence

We live in a complex world where challenges are intimately linked—and so must be the solutions. That's why we leverage expertise across FHI 360 to offer integrated solutions to address the most pressing education challenges.

## Areas Of Expertise

Curriculum and materials development	Primary and post-primary education
Early grade reading	Research and evaluation
Education and employability	Systems strengthening
Education in emergencies	Teacher professional development
Institutional capacity building	Youth
Policy and management information systems	

## Cross-Cutting Expertise

Gender equity	Water, sanitation, and hygiene (WASH)
Health and nutrition	
Inclusive education	Social and behavior change communication
Information and communications technology (ICT)	

**About FHI 360:** FHI 360 is a nonprofit human development organization dedicated to improving lives in lasting ways by advancing integrated, locally driven solutions. Our staff includes experts in health, education, nutrition, environment, economic development, civil society, gender, youth, research, technology, communication and social marketing—creating a unique mix of capabilities to address today's interrelated development challenges. FHI 360 serves more than 60 countries and all U.S. states and territories.

### WASHINGTON DC OFFICE

1825 Connecticut Ave, NW  
Washington, DC 20009 USA  
**T** 1.202.884.8000  
**F** 1.202.884.8400

### FHI 360 HEADQUARTERS

359 Blackwell Street, Suite 200  
Durham, NC 27701 USA  
**T** 1.919.544.7040  
**F** 1.919.544.7261

### ASIA PACIFIC REGIONAL OFFICE

19th Floor, Tower 3  
Sinhorn Building  
130–132 Wireless Road  
Kwaeng Lumpini, Khet Phatumwan  
Bangkok 10330 Thailand  
**T** 66.2.263.2300  
**F** 66.2.263.2114

### EAST AND SOUTHERN AFRICA REGIONAL OFFICE

1115 Burnett Street  
Hatfield Square, Building 3, 4th Floor  
Hatfield, Pretoria 0083 South Africa  
**T** 27.12.762.4000  
**F** 27.12.762.4001

**[www.fhi360.org](http://www.fhi360.org)**