

GUATEMALA
Juega Conmigo
ChildFund
International

SERBIA
Care for Child
Development
unicef

BHUTAN
Prescription
to Play
Save the Children

ZAMBIA
Care for Child
Development
unicef

RWANDA
Sugira Muryango
RESEARCH PROGRAM ON
CHILDREN AND ADVERSITY
FXB RWANDA

Playful Parenting Implementation Research

The [LEGO Playful Parenting Implementation Research](#) project is a five-year research award studying five playful parenting interventions working with children aged 0-3 in Bhutan, Guatemala, Rwanda, Serbia, and Zambia. The project is helping define 'what works' for effective scaling of playful parenting interventions and what impact these interventions have on caregivers, service providers, and children.

With particular attention to the LEGO Foundation's Learning through Play (LtP) philosophy, the implementation research harmonizes data collection efforts across programs and partners to distill findings for the larger early childhood development community.

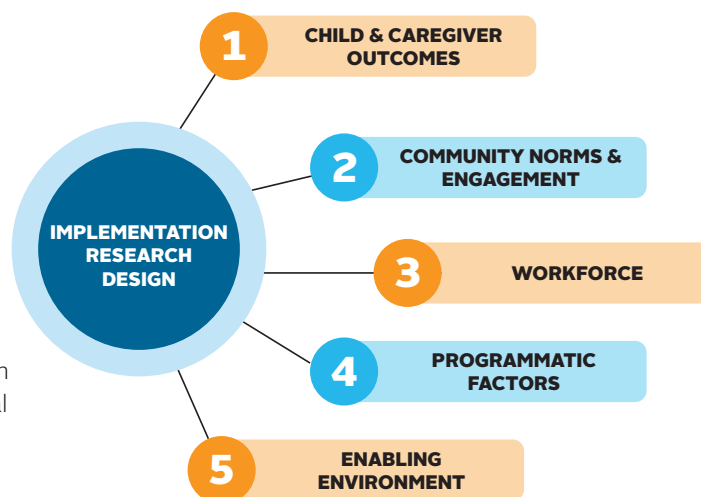
Implementation Research

As the LEGO Foundation's (LF) research and learning partner, FHI 360 collaborates with LF's other playful parenting partners to embed a robust research agenda into each program. The implementation research features five research questions focused on different outcomes & processes related to implementation including, child & caregiver outcomes, community norms & engagement, the workforce, programmatic factors, and the enabling environment. By examining components of implementation at different levels of the system, the research considers both vertical and horizontal pathways to scale for each program.

Child & Caregiver Outcomes

Play can be powerful in driving a child's developmental growth across cognitive, socioemotional, and physical domains. When it comes to the relationship between children and caregivers, play offers an avenue to foster positive and developmentally stimulating interactions.

FHI 360 employs a quasi-experimental design to examine child outcomes and caregiver knowledge via direct observations, structured interviews, and standardized assessments. In an effort to harmonize data collection efforts with Playful Parenting partners, FHI 360 mirrors instruments used by partners, in



addition to driving the use of internationally standardized and validated measures, such as the [Global Scale for Early Development \(GSED\)](#).

As partner programs go to scale, they will reach more and more children & caregivers across their countries of implementation. FHI 360 builds on partner's existing MEL efforts to examine the extent to which child & caregiver outcomes are sustained at scale

Workforce

Evidence links a well-trained and supported workforce to positive developmental outcomes.¹ The workforce, from community health workers to national health assistants to volunteers, sits at the frontlines of all five Playful Parenting programs. This same workforce thus represents a core component of FHI 360's research design. By examining roll out of training and supervision; workforce motivation and retention; and quality of service provision, FHI 360 seeks to support partners in understanding workforce competencies and capacity during the process of scale up. The research tracks workforce across time through standardized knowledge assessments pre- and post-training, surveys and observations in the months following training, and annual qualitative interviews to paint a clearer picture of their knowledge, capacities, challenges, and motivations.

Community Norms & Enabling Environment

The policy and institutional environment, as well as the community norms around parenting, form the bedrock for integrating play-based parenting interventions into national systems. FHI 360 examines how these factors shape scale-up through a blend of focus group discussions (FGDs) and interviews with caregivers, including a targeted father engagement guide, as well as key informant interviews (KIIs) with government stakeholders at multiple levels of the system. Father engagement represents a key theme in the research, with gendered norms manifesting differently in each context of implementation. FHI 360's selected measures of community norms, and more specifically father engagement, offer insights into how communities view roles of fathers, mothers, and other caregivers in childcare. Government KIIs yield critical feedback on how stakeholders perceive the importance of play and scalability of programs in real-time as partners move to scale.

Community of Practice

In addition to conducting rigorous research on playful parenting programs, FHI 360 facilitates a community of practice amongst the LEGO Foundation's Playful Parenting partners. By employing experiential, playful facilitation styles, FHI 360 aims to cultivate a community space that enables transparent exchange and problem solving between partners. FHI 360 holds regular CoP meetings to disseminate findings from the implementation research, offer partners opportunities to share programmatic experiences, and jointly tackle challenges uncovered through the research and implementation. Grounded in leading adult learning pedagogies, the CoP pushes community members to engage more deeply with the research, and work as a collective to pursue pathways to scale for their programs.

About FHI 360: FHI 360 is a nonprofit human development organization dedicated to improving lives in lasting ways by advancing integrated, locally driven solutions. Our staff includes experts in health, education, nutrition, environment, economic development, civil society, gender, youth, research, technology, communication and social marketing—creating a unique mix of capabilities to address today's interrelated development challenges. FHI 360 serves more than 70 countries and all U.S. states and territories.



Measures Used

Ages & Stages (ASQ)

Caregiver Reported Early Development Instruments (CREDI)

Malawi Developmental Assessment Tool (MDAT)

Global Scale for Early Development (GSED)

Caregiver Knowledge of Child Development Inventory (CKCDI)

¹ <https://www.earlychildhoodworkforce.org/About>

WASHINGTON DC OFFICE

1825 Connecticut Ave, NW
Washington, DC 20009 USA
T 1.202.884.8000
F 1.202.884.8400

FHI 360 HEADQUARTERS

359 Blackwell Street, Suite 200
Durham, NC 27701 USA
T 1.919.544.7040
F 1.919.544.7261

ASIA PACIFIC REGIONAL OFFICE

19th Floor, Tower 3
Sindhorn Building
130-132 Wireless Road
Kwaeng Lumpini, Khet Phatumwan
Bangkok 10330 Thailand
T 66.2.263.2300
F 66.2.263.2114

EAST AND SOUTHERN AFRICA REGIONAL OFFICE

333 Grosvenor Street
Hatfield Gardens, Block B
Hatfield, Pretoria 0083 South Africa
T 27.12.762.4000
F 27.12.762.4001

WWW.FHI360.ORG