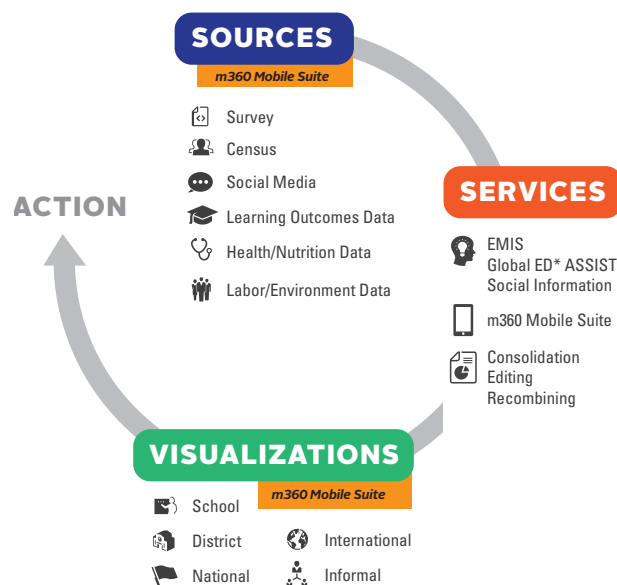


# Digital Solutions

## FHI 360 DIGITAL SOLUTIONS



FHI 360's global education experts have over 40 years of experience working with information systems in more than 70 countries. Our information solutions reduce costs and provide timely, reliable and accurate information. Solutions can be configured in as little as six months, allowing countries to quickly modernize and make informed decisions that impact the most important education issues.

The foundation for sound education policy and effective education system management is information. For decades, having timely access to basic information about students, teachers and schools has been a challenge, particularly in low-resource environments. Without access to this data, education leaders cannot evaluate the effectiveness of education policies and strategies.

With greater demands for more and increasingly nuanced information in decentralized systems and conflict and crises contexts, information systems must be faster, more flexible and more accurate. Innovations in information and management technology—particularly mobile tools—have enabled new solutions that address these issues in a cost-effective and flexible manner.

FHI 360's global education experts are at the forefront of developing effective information systems that respond to changing needs. With an integrated suite of adaptable tools, using cutting edge technology from cloud-based systems, mobile solutions, biometric identification (ID) systems, business intelligence software and dashboards, FHI 360 builds solutions that meet and anticipate the needs of our evolving world.

### GLOBAL ED\*ASSIST

FHI 360's **Global ED\*ASSIST** software is the foundation of our efforts to strengthen the management and use of educational data. This software and process, which is being used in 20 countries, is the basis for a comprehensive system that links people, practices and technology to provide quality statistics in a timely and cost effective manner. Our team works with stakeholders to define their own data needs, tailors the data repository and visualizations to meet those specifications and then provides training and ongoing support to ensure local ownership.

The UNICEF-funded Education Management Information System Support project in South Sudan, which reached 98% of all known schools at all education levels, used Global ED\*ASSIST to improve the reliability and timeliness of education statistics at the national, county and village levels. Through the project, FHI 360 collaborated with the central government to create evidence-based approaches to allocating funds to the states and equipped education officials to estimate operating and capital costs.

### m360 Mobile Suite

FHI 360's m360 is a suite of open source, mobile applications that allow users to collect, analyze, report and visualize a full range of school data. m360 can be used on its own, or it can be used to complement Global ED\*ASSIST by moving users from paper to mobile collection and reporting. m360 enables collection of more timely and accurate data that are integrated into the national system. It also provides instant visualization at the school level and data access at all intermediate administrative levels.

Our information solutions go beyond education to incorporate health, nutrition, sanitation and environmental indicators, so that we have a more complete understanding of what affects education.

**About FHI 360:** FHI 360 is a nonprofit human development organization dedicated to improving lives in lasting ways by advancing integrated, locally driven solutions. Our staff includes experts in health, education, nutrition, environment, economic development, civil society, gender, youth, research, technology, communication and social marketing—creating a unique mix of capabilities to address today's interrelated development challenges. FHI 360 serves more than 70 countries and all U.S. states and territories.

**WASHINGTON DC OFFICE**  
1825 Connecticut Ave, NW  
Washington, DC 20009 USA  
T 1.202.884.8000  
F 1.202.884.8400

**FHI 360 HEADQUARTERS**  
359 Blackwell Street, Suite 200  
Durham, NC 27701 USA  
T 1.919.544.7040  
F 1.919.544.7261

**ASIA PACIFIC REGIONAL OFFICE**  
19th Floor, Tower 3  
Sindhorn Building  
130–132 Wireless Road  
Kwaeng Lumpini, Khet Phatumwan  
Bangkok 10330 Thailand  
T 66.2.263.2300  
F 66.2.263.2114

**EAST AND SOUTHERN AFRICA  
REGIONAL OFFICE**  
333 Grosvenor Street  
Hatfield Gardens, Block B  
Hatfield, Pretoria 0083 South Africa  
T 27.12.762.4000  
F 27.12.762.4001

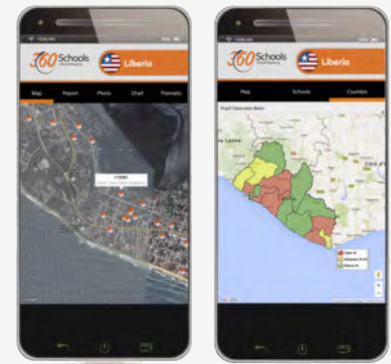
[www.fhi360.org](http://www.fhi360.org)

## TRANSITIONING TO MOBILE TECHNOLOGY

Through the DFID-funded Education Quality Improvement Program-Tanzania (EQUIP-T), FHI 360 is working with the Tanzania President's Office to expand their education information throughout the nation's school system. FHI360 used the Global ED\*ASSIST platform in several regions before transitioning to m360. To address the challenge of monitoring daily school attendance and student performance with little or no connectivity, FHI 360 used its **School Information System (SIS)** from its m360 mobile suite. SIS transmits entire databases via mobile internet or SMS and is now helping schools monitor infrastructure data, teacher and student performance, daily attendance and other school management activities. SIS is being used in more than 4,400 preschools and primary schools and 1,000 support offices in seven regions in Tanzania

## APPLICATIONS IN CONFLICT AND CRISIS CONTEXTS

FHI 360 and the United Nations High Commissioner for Refugees (UNHCR) used **K-Mobile**, a forerunner of m360, to collect information, determine locations and photograph education facilities in refugee camps in 11 countries and thousands of learning sites. The data enabled UNHCR to view the schools via Google Earth, see school/learning site data and make more informed decisions about how refugee resources should be allocated. K-mobile and m360 have been used in countries including Liberia, Sierra Leone, South Sudan and Tanzania.



## INTEGRATED SOLUTIONS

m360 links education data to key indicators from other sectors. For example, with our m360 **Results for Education and Child Health (REACH)** module, users can quickly and easily measure both education and health factors—such as nutrition and sanitation facilities—that impact a child's ability to learn. m360 REACH is open source and can be used off-line, which means preliminary results can be reviewed immediately after the data are collected. This provides teachers, school administrators and governments with real-time information they can use to improve learning.

## BIOMETRIC IDENTIFICATION TOOLS

To complement Global ED\*ASSIST and m360, FHI 360 pioneered the use of biometric ID cards and readers. Our use of these technologies assists ministries in strengthening their payroll systems, reducing fraud, conserving scarce resources and improving teachers' working conditions. Our biometric ID cards and readers track teacher and staff attendance by having personnel "sign-in" using their fingerprints. This information is then sent to a central system.

In Liberia, through the USAID-funded Liberia Teacher Training Program (LTTP) II, FHI 360 and the Ministry of Education (MOE) installed a mobile and computer linked biometric ID-card system that helped identify thousands of "ghost teachers." This system is helping improving resource allocation, education reporting and accountability in Liberia.

For more information, please contact [globallearning@fhi360.org](mailto:globallearning@fhi360.org).