

Program brief on

# VOCATIONAL TRAINING and JOB PLACEMENT PROGRAM

for clients in drug treatment program in Hai Phong and Ho Chi Minh city



**USAID**  
FROM THE AMERICAN PEOPLE



Family Health  
International



In July 2011, FHI became FHI 360.



FHI 360 is a nonprofit human development organization dedicated to improving lives in lasting ways by advancing integrated, locally driven solutions. Our staff includes experts in health, education, nutrition, environment, economic development, civil society, gender, youth, research and technology – creating a unique mix of capabilities to address today's interrelated development challenges. FHI 360 serves more than 60 countries, all 50 U.S. states and all U.S. territories.

Visit us at [www.fhi360.org](http://www.fhi360.org).

# 1 Background

The Vocational Training and Job Placement Program for Recovering Drug Users commenced in early 2009 in Hai Phong and Ho Chi Minh City. This program has been implemented by Hai Phong Provincial Health Service and AIDS Committee of Ho Chi Minh City with technical assistance from Family Health International (FHI/Vietnam) and the funding from the U.S. President's Emergency Plan for AIDS Relief (PEPFAR) through the US Agency for International Development (USAID).

# 2 Who is this program for?

This program will serve two main groups of beneficiaries:

1. Methadone patients who have been in treatment for at least 6 months (and have maintained good treatment adherence)
2. Members of peer social support groups supported by FHI IDU interventions who have stopped drug use for at least 6 months

*If you plan to join a social support group, please contact the program through contact information provided in Section 7.*

# 3 Steps of the program

The program is broken down into **four distinct stages** (each represented by a different color in the chart at the end). These four stages are applicable for selected recovering drug users who want to take a vocational training course for job placement. **Stages 1, 3 and 4** will be applicable for those who already have job expertise.

## Stage 1 (3-4 weeks)

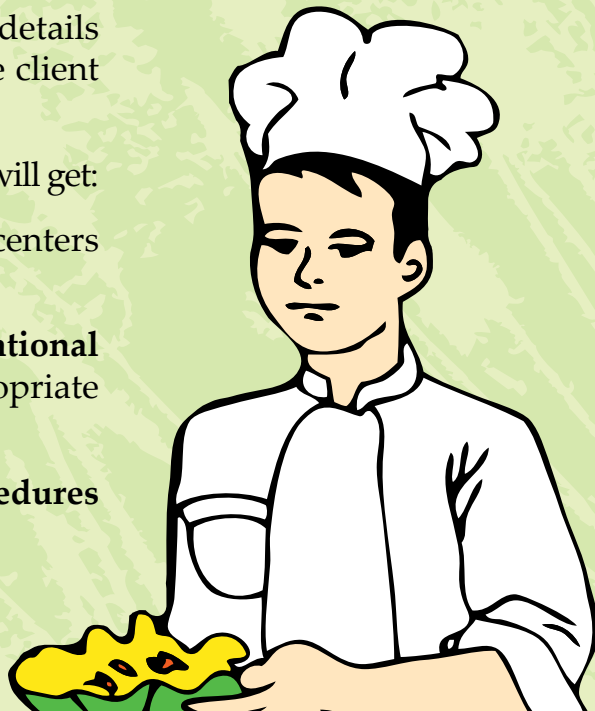
This stage consists of two individual interviews.

### The initial interview:

- ◆ will involve a **detailed explanation** of the program

### The official interview:

- ◆ A vocational counselor will discuss details of job related information to help the client **make the best selection of job**
- ◆ If the client has no job expertise, he/she will get:
  - the listing of vocational training centers in local area
  - consulted on **appropriate vocational training courses** as well as appropriate centers
  - support with **registration procedures** to join the course



## Stage 2 (3-6 months)

Depending on the individual plan developed at Stage 1:

The program will **cover the monthly fee** for the client's vocational training course at the selected center.

Apart from vocational training, the program will provide **two short-course trainings** for the enrolled clients. These training courses are to help

- ◆ attain mental stability
- ◆ strengthen self-efficacy
- ◆ provide life skills and social communication

*For the clients with job expertise and need not vocational training, this stage can be skipped.*

## Stage 3 (3-4 months)

The program will contact employers about **job placement** for clients who successfully accomplished training courses.

The vocational counselor will have regular discussion with the client and employer to **provide additional support** if required. If the client finds the job placement inappropriate, the counselor will work with clients and employers to **find a second more appropriate placement**. Each client can **change the job once**.

## Stage 4 (6 months)

This stage is client's job placement stability **follow-up**.

The counselor will sometimes make contact with the client for **information updates** and **additional support** if required.

After 6 months of follow-up, if the client **succeeds** in his/her work performance and progresses in workplace reactions and responses, counselor will **end formal follow up** and appraisals to the client.

*Total lifetime of the job program will range from 13 to 16 months depending on individual competence and conditions.*

# 4 What the program can offer?

- ◆ Find appropriate vocational career
- ◆ Pay vocational training fees
- ◆ Provide monthly transportation allowances up to 200,000 Vietnamese dong (if you go to vocational training class regularly)
- ◆ Provide training on self strengthening, social skills and life skills
- ◆ Organize small parties to celebrate your success in training and job placement
- ◆ Organize for you to share your achievements with peers in your local areas and other cities/provinces

# 5 What the program CANNOT offer at this time?

- ◆ Automobile driving training
- ◆ Micro finance support

*The program might provide micro finance support in the future.*

# 6 Your responsibilities

- ◆ Voluntarily participate in the program
- ◆ Read through the program brief for consistent understanding about the program missions and visions
- ◆ Cooperate with counselor in developing individual plan and provide commitment of taking actions
- ◆ Fully attend vocational training sessions of your choice
- ◆ Fully attend short-course trainings on mental stability, self-efficacy, social communication and life skills



# 7 Contact information

Please kindly contact the followings for more details of the program:

## ◆ In Hai Phong:

### The Vocational and Job Club

Address: 10 Lam Son, Hai Phong

Tel: (031) 3 714 173

### Methadone Clinic in Le Chan

Address: 196 Nguyen Duc Canh,  
Hai Phong

Tel: (031) 3 950 317

## ◆ In Ho Chi Minh city:

### The Community Care and Support Center of Binh Thanh

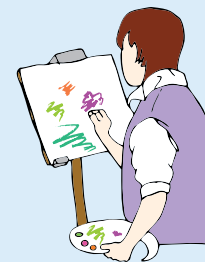
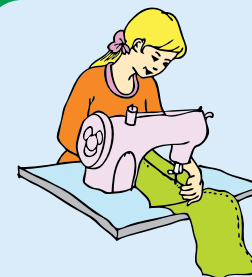
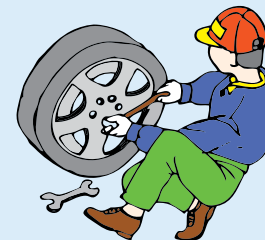
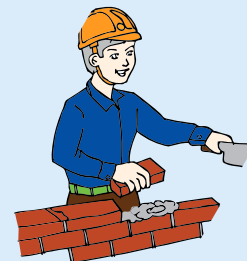
Address: 8/104 Dinh Bo Linh, Ward 24,  
Binh Thanh District

Tel: (08) 3 551 0725

### The Community Care and Support Center of District 8

Address: 318 Au Duong Lan, Ward 3,  
District 8

Tel: (08) 3 851 8038





# SOCIAL SUPPORT, VOCATIONAL AND EMPLOYMENT PROCESS

Duration: 13-16 months

